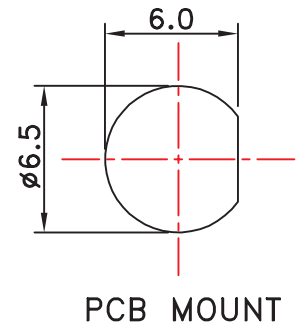


***NOTES:

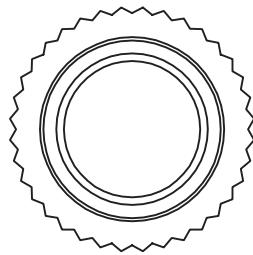
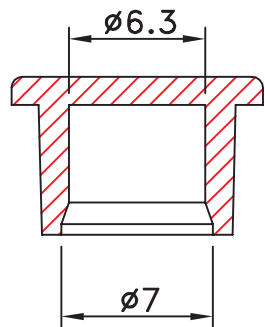
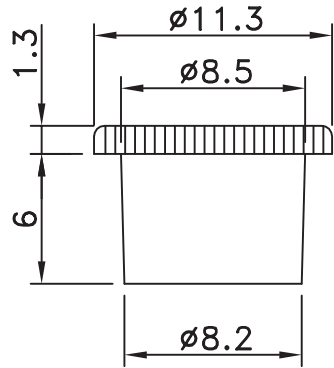
1. CONTACT: BECU/30u" GOLD PLATED.
2. INSULATION: PTFE/NATURE.
3. BODY: BRASS/NICKEL.
4. RUBBER SEAL: SILICONE/RED COLOR.
5. NUT: BRASS/NICKEL.
6. TEETH WASHER: STEEL/NICKEL.



WSMAX2-FPBNOW-50-LF
LEADFREE

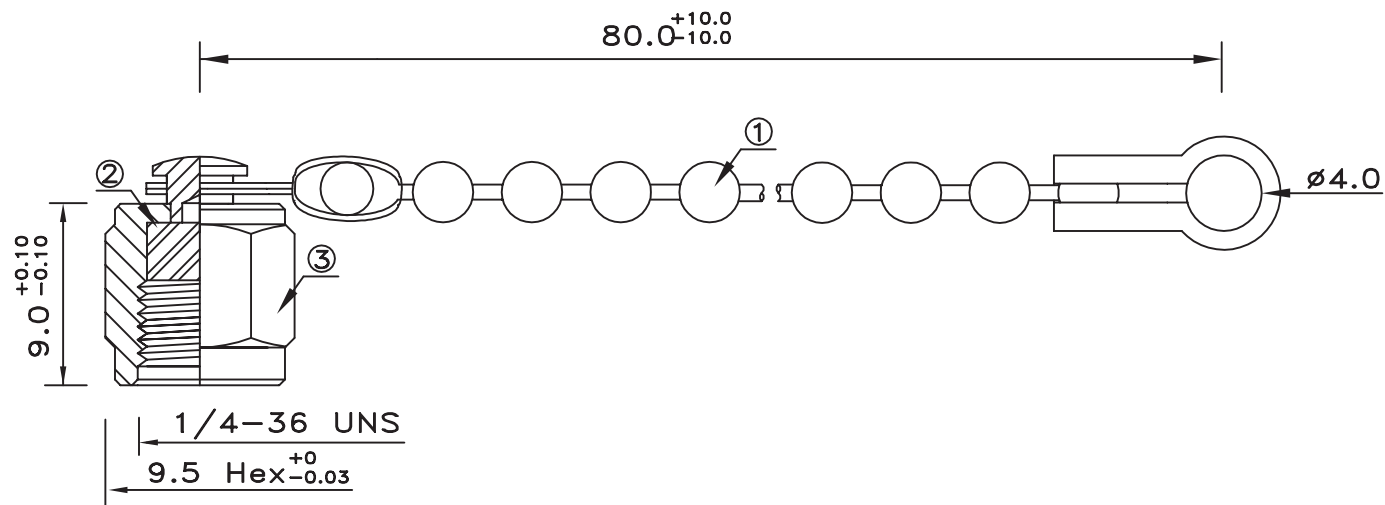
RoHS Compliant

	PART NO. WSMAX2-FPBNOW-50		TOLERANCES ARE .X \pm 0.2 .XX \pm .XXX \pm AWG	DESCRIPTION: SMA JACK TO SMA JACK BULKHEAD ADAPTOR				
	DWG NO. WSMAX2-FPBNOW-50						CHECKED BY CY	
焯倫股份有限公司	FILE NO.		DRAWING BY		AREA	REVISIONS	HK	DATE
	UNIT / mm	SCALE 1:1	PROJECTION					



***NOTES:
1. PE BLACK COLOR.

	PART NO. WSMAX2-FPBNOW-50		TOLERANCES ARE .X ± 0.2 .XX ± .XXX ± AWG	DESCRIPTION: SMA DUST CAP				
	DWG NO. WSMAX2-FPBNOW-50						CHECKED BY CY	
焯倫股份有限公司	FILE NO.		DRAWING BY		AREA	REVISIONS	HK	DATE
	UNIT / mm	SCALE 1:1	PROJECTION					



***NOTES:

1. BRASS WITH NICKEL PLATED.
2. RUBBER SILICON RED COLOR.
3. BRASS WITH NICKEL PLATED.

MORETHANALL
CONNECTORS
ASSEMBLIES

PART NO. WSMAX2-FPBNOW-50

DWG NO. WSMAX2-FPBNOW-50

FILE NO.

UNIT / mm

SCALE 1:1

CHECKED BY CY

DRAWING BY

PROJECTION



TOLERANCES ARE

.X ± 0.2
.XX ±
.XXX ±
AWG

DESCRIPTION: SMA PROTECTIVE CAP FOR JACK WITH CHAIN

AREA

REVISIONS

HK

DATE

煜倫股份有限公司