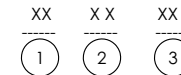


DATE CODE :

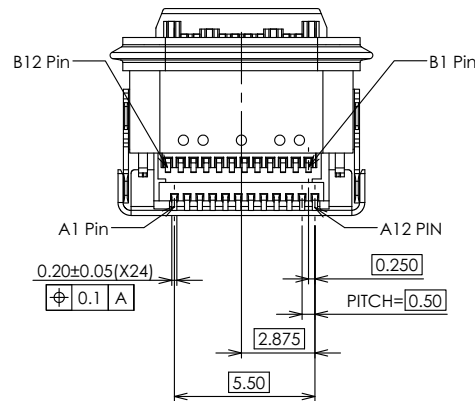
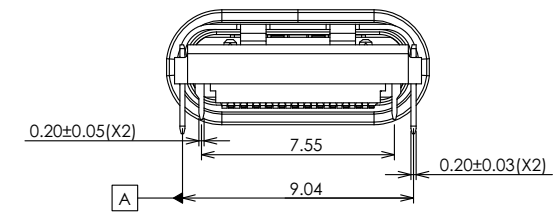
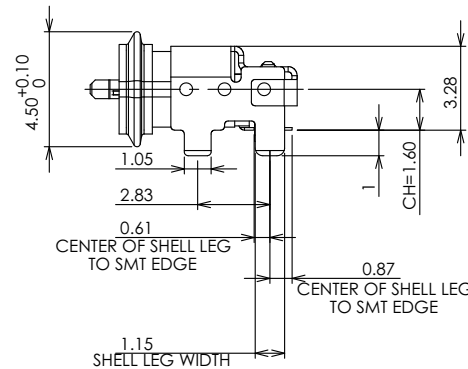
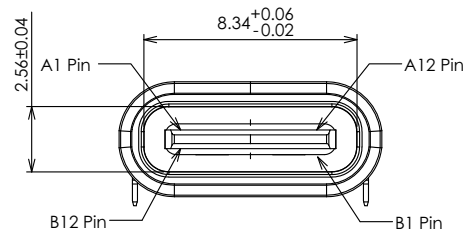


1. year(2016-->16 2017-->17 201X-->1X)

2. month(01~12)

3. day(01~31)

word pitch =0.2mm / word high=1.0mm



6	EMI	2	H-NBP23-E0X00	METAL / NI PLATED
5	OUTER SHELL	1	S-NBP23-20X00	METAL / NI PLATED
4	SHELL	1	S-NBP23-10X00	METAL / ULTRASONIC CLEANING
3	GROUND PLATE	1	H-NBR23-G0X00	METAL / NI PLATED
2	CONTACT	24	T-NBR23-X0000	COPPER ALLOY / Au PLATED
1	HOUSING	1	NBR23-MKXXXX	HI-TEMP. G.F. UL94V-0
ITEM	NAME	QTY	PART#	MATERIAL / FINISH

PIN NO.	A1	A2	A3	A4	A5	A6	A7	A8	A9	A10	A11	A12
SIGNAL NAME	GND	SSTXp1	SSTXn1	VBUS	CC1	Dp1	Dn1	SBU1	VBUS	SSRXn2	SSRXp2	GND
PIN NO.	B12	B11	B10	B9	B8	B7	B6	B5	B4	B3	B2	B1
SIGNAL NAME	GND	SSRXp1	SSRXn1	VBUS	SBU2	Dn1	Dp1	CC2	VBUS	SSTXn2	SSTXp2	GND

RoHS Compliant

TOLERANCES ARE

**MORETHANALL**  
PCB CONNECTORS  
Cable ASSEMBLIES

煜倫股份有限公司

www.morethanall.com

DRAWING BY CY

CHECKED BY GENIUS

UNIT / mm

SCALE 1 : 1

DATE

SIZE A4

X. ± 0.38

.X ± 0.25

.XX ± 0.13

.XXX ± 0.05

ANG ±

PPOJECTION

照片框

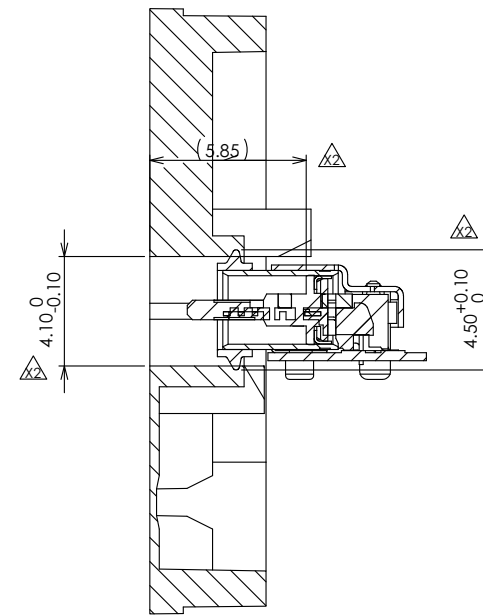
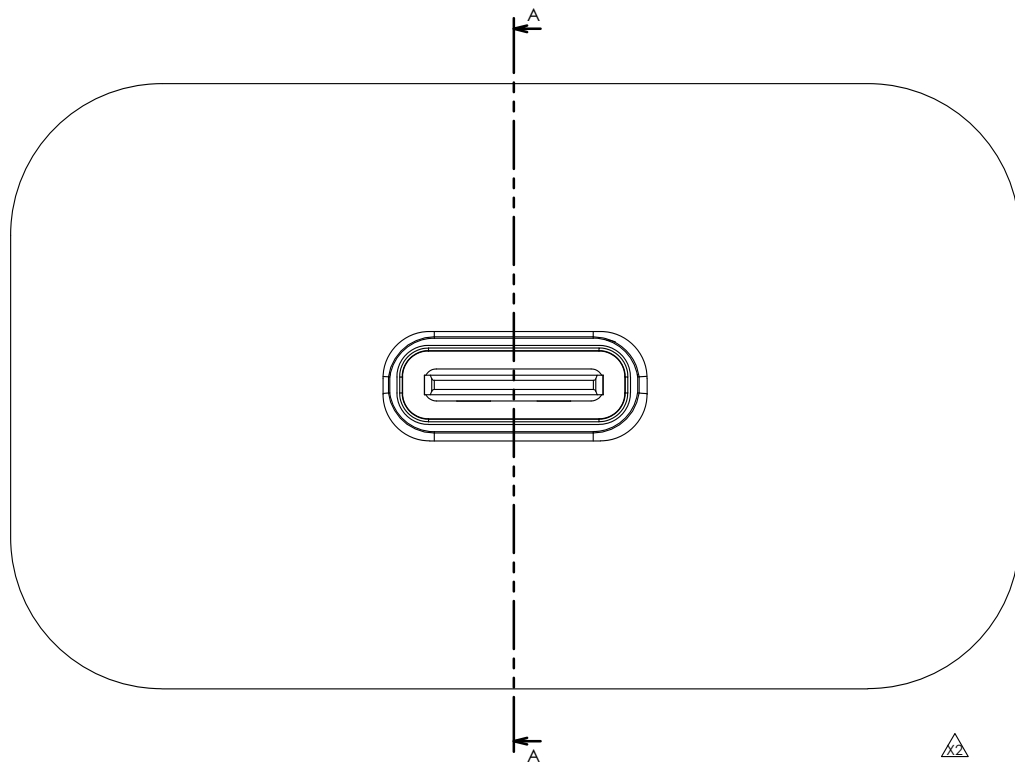
ORDER INFORMATION

WPUB-SWMM9090MX-24C-LF

SERIES

LEADFREE  
24 WAY C TYPE  
NON SPRING  
METAL FOOT 9.04+9.04mm  
90°SMT  
FEMALE

DESCRIPTION: USB TYPE C (GEN 2) CONN. RECEPTACLE - TOP MOUNT WATERPROOF / CH=1.6 / LIM



剖面圖 A-A

COMPRESSION RATIO  
RECOMMENDATION

RoHS Compliant

TOLERANCES ARE

**MORETHANALL**  
PCB CONNECTORS  
Cable ASSEMBLIES

煜倫股份有限公司

www.morethanall.com

DRAWING BY CY

CHECKED BY GENIUS

UNIT / mm

SCALE 1 : 1

DATE

SIZE A4

X. ± 0.38

.X ± 0.25

.XX ± 0.13

.XXX ± 0.05

ANG ±

PJECTION

照片框

ORDER INFORMATION

WPUB-SWMM9090MX-24C-LF

SERIES

LEADFREE

90°SMT

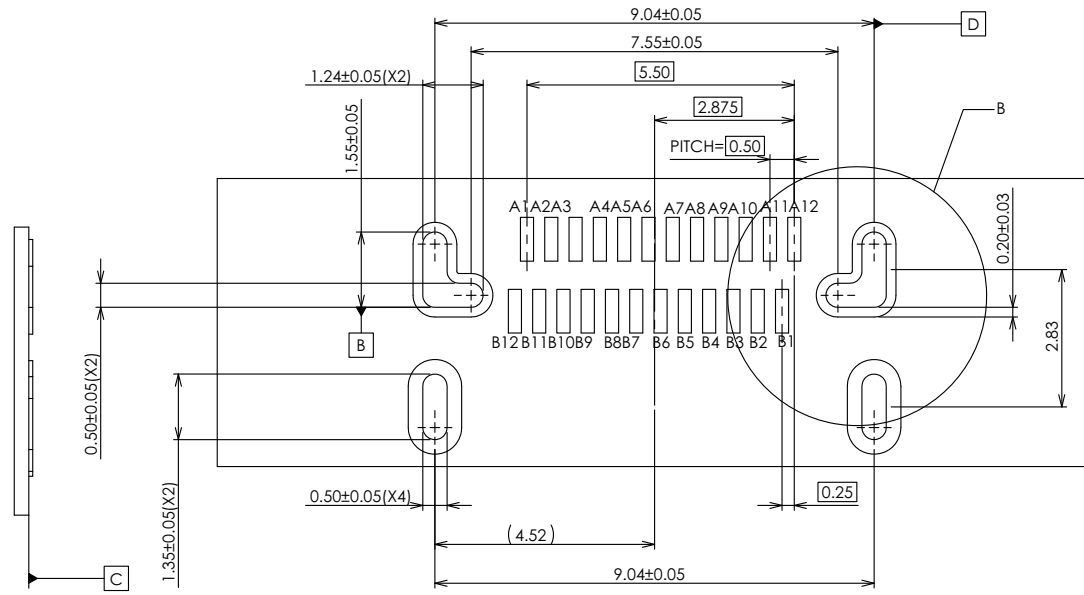
FEMALE

24 WAY C TYPE

NON SPRING

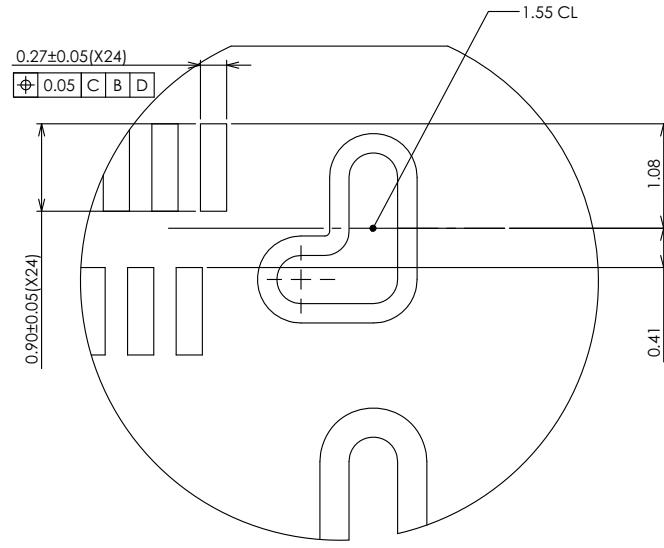
METAL FOOT 9.04+9.04mm

DESCRIPTION: USB TYPE C (GEN 2) CONN. RECEPTACLE - TOP MOUNT WATERPROOF / CH=1.6 / LIM



RECOMMENDED FPC LAYOUT  
THICKNESS IS 0.3mm  
TOLERANCE ± 0.05

- NOTES :
- 1.0. ELECTRICAL CHARACTERISTIC :
- 1.1. LOW LEVEL CONTACT RESISTANCE:  
INITIAL : 40 mΩ FOR ALL CONTACT MAXIMUM.  
AFTER TEST: 50mΩ MAXIMUM
  - 1.2. DIELECTRIC WITHSTANDING VOLTAGE :  
100 VAC FOR ONE MINUTE SEA LEVEL.
  - 1.3. INSULATION RESISTANCE :  
100 MΩ MINIMUM.
  - 1.4. CURRENT RATING :  
VBUS AND GND CONTACTS RATED AT 1.25A EA.  
PARALLELED FOR A TOTAL OF 5A.
- 2.0. MECHANICAL CHARACTERISTIC :
- 2.1. INSERTION FORCE: 1~10,000CYCLES 5N~20N
  - 2.2 EXTRACTION FORCE:  
INITIAL EXTRACTION FORCE 6TH CYCLES OF 8N ~ 20 N  
(1~5 INSERTION/EXTRACTION PRECONDITIONING CYCLES)  
DURABILITY 32TH EXTRACTION FORCE SHALL BE 33% OF THE INITIAL  
READING AND WITHIN THE RANGE 8 N ~ 20 N.  
(6 CYCLES ADDITIONAL 25 INSERTION/EXTRACTION CYCLES )  
AFTER DURABILITY 10,000 CYCLES OF 6N ~ 20N
  - 2.3. DURABILITY : 10,000 CYCLES.
  - 3.0. OPERATING TEMPERATURE: -55°C TO +85°C
  - 4.0. WATERPROOF GRADE: IPX7



RoHS Compliant

TOLERANCES ARE

**MORETHANALL**  
PCB CONNECTORS  
Cable ASSEMBLIES

DRAWING BY CY		X. ± 0.38
CHECKED BY GENIUS		.X ± 0.25
UNIT / mm		.XX ± 0.13
SCALE 1 : 1	DATE	.XXX ± 0.05
		ANG ±

煜倫股份有限公司

www.morethanall.com

SIZE A4 PPROJECTION



ORDER INFORMATION

WPUB-SWMM9090MX-24C-LF  
SERIES | LEADFREE  
24 WAY C TYPE  
NON SPRING  
METAL FOOT 9.04+9.04mm  
90°SMT  
FEMALE

DESCRIPTION: USB TYPE C (GEN 2) CONN. RECEPTACLE - TOP MOUNT WATERPROOF / CH=1.6 / LIM