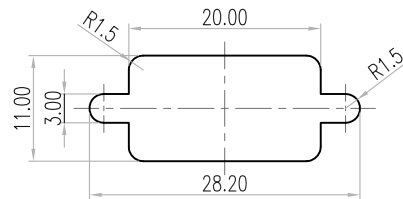
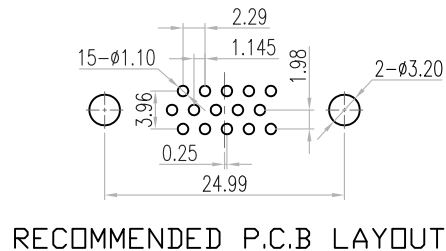
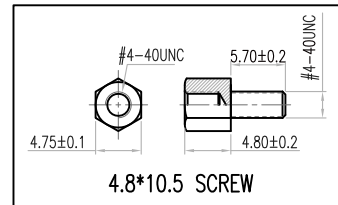
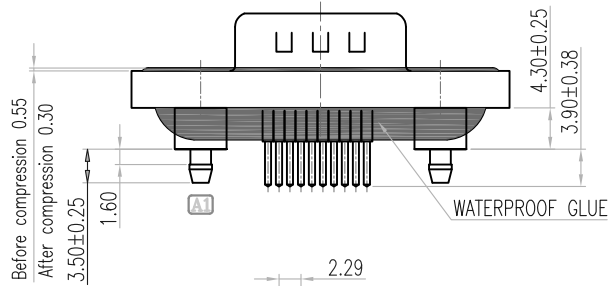


### SPECIFICATIONS

1. D-SUB
- 1.1 Voltage: 250 VAC(RMS) Max.
- 1.2 Current Rating: 5 Ampere per Contact
- 1.3 Contact Resistance: 10 Milliohms Max.
- 1.4 Insulation Resistance: 5000 Megohms Min.
- 1.5 Dielectric Withstanding Voltage: 1000 VAC(RMS)
- 1.6 Screwing torque : 3.0 Kgf.cm Max.
- 1.7 Total Mating Force: 7.2 Kgf Max.
- 1.8 Total Unmating Force: 1.2 Kgf Min.
- 1.9 Operating Temperature: -55°C to +105°C
- 1.10 Waterproof Rate: IP 67 Min.
- 1.11 Insertion Force: 339g/Pin Max.
- 1.12 Separation Force: 40g/Pin Min.

### NOTES

1. MATERIAL:
  - Housing:PBT, UL 94V-0, Color:Black.
  - Terminal:Copper Alloy.
  - Shell:SPCC.
  - Boardlock:Copper Alloy.
  - Screw:Copper Alloy.
  - Waterproof Ring: Silica Gel.
  - Waterproof Glue: Epoxy.
2. FINISH:
  - Terminal:Full Gold Plated over Nickel Area.
  - Shell:Nickel Plated.
  - Boardlock:Tin Alloy.
  - Screw:Nickel Plated.
3. This Product is RoHS Compliance Product.



Screw L=4.7 For Panel Thickness Under 1.2mm  
 Panel Thickness 1.2mm Max.  
 Screw L=5.7 For Panel Thickness Between 1.2~2.0mm  
 Panel Thickness 1.2~2.0mm

INSPECTION DIMENSION:(A)-(E)

RoHS Compliant

TOLERANCES ARE

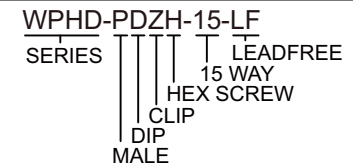
**MORETHANALL**  
 PCB CONNECTORS  
 Cable ASSEMBLIES  
 煜倫股份有限公司  
 www.morethanall.com

DRAWING BY CY  
 CHECKED BY GENIUS  
 UNIT / mm SCALE 1 : 1  
 DATE  
 SIZE A4 PPROJECTION

X, ±  
 .X ±  
 .XX ± 0.25  
 .XXX ± 0.13  
 ANG ± 2°

照片框

ORDER INFORMATION



DESCRIPTION: D-SUB WATERPROOF CONNECTORS, SOLDER