

MATERIALS AND FINISH

SHELL:STEEL MATERIAL, TIN FINISHED

INSULATOR:PBT GF, UL 94V-0 , BLACK COLOR

SIGNAL CONTACT ; COPPER ALLOY, GOLD FLASH

METAL WATERTIGHT FRAMB:PBT GF, 94V-0 , BLACK COLOR

O-RING : SILICONE

EPOXY SEALANT:EPOXY

ELECTRICAL CHARACTERISTICS

SIGNAL CONTACT CURRENT RATING : 3.0 AMPS

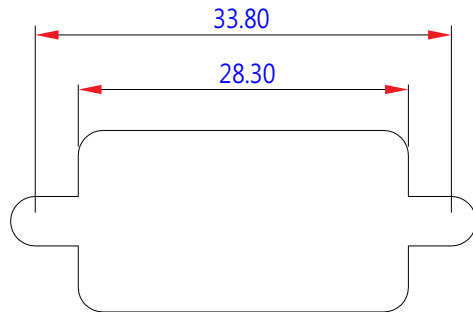
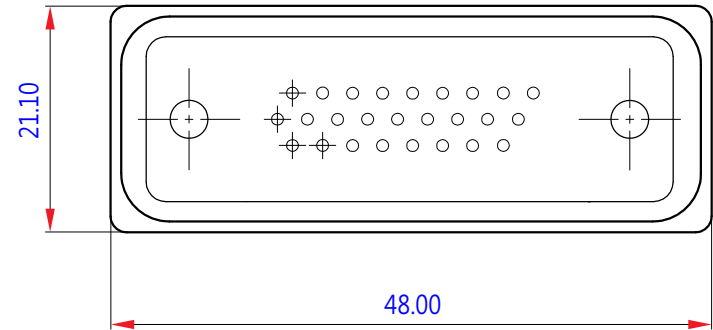
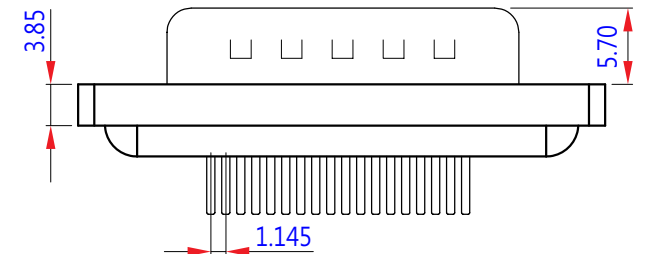
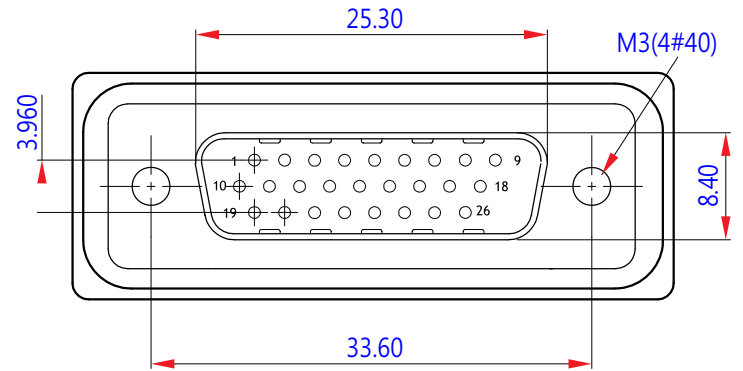
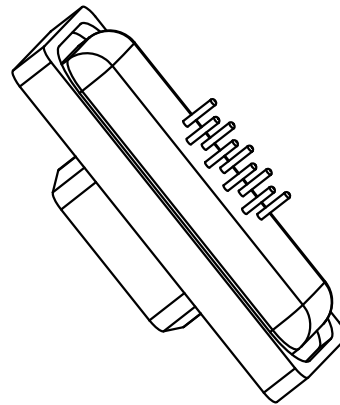
SIGNAL CONTACT RESISTANCE : 10 m MAX

DIELECTRIC WITHSTANDING VOLTAGE : 1000v AC FOR 1 MINUTE

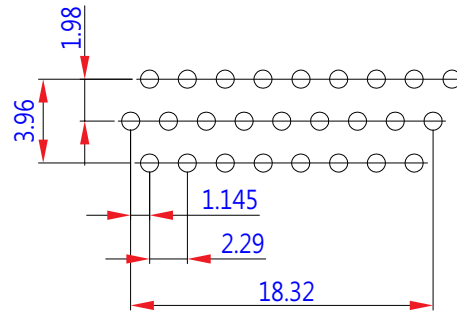
INSULATION RESISTANCE : 5G MIN.

TEMPERATURE RATING : -55 C ~ +105 C

DEGREE OF PROTECTION: IP67 ACCORDING TO IEC60529



Recommended Panel Cut-Out



Recommended P.C.B Layout

WPHD-PD-26-LF
LEADFREE

RoHS Compliant



PART NO. WPHD-PD-26

DWG NO. WPHD-PD-26

FILE NO.

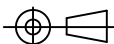
UNIT / mm

SCALE 1:1

CHECKED BY CY

DRAWING BY

PROJECTION



TOLERANCES ARE

X. ± 0.30

.X ± 0.20

.XX ± 0.10

.XXX ± 0.05

ANG

DESCRIPTION: 防水 Highden 26P 公 Dip 黑色

AREA

REVISIONS

DATE

煜倫股份有限公司