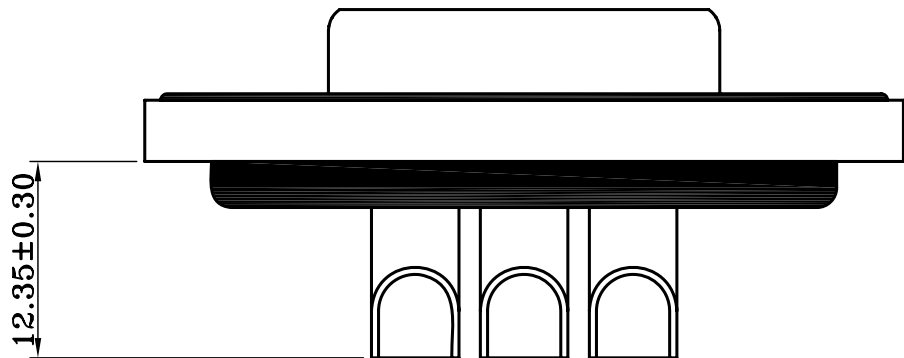


MATERIALS AND FINISH
 SHELL : STEEL MATERIAL, TIN FINISHED
 INSULATOR : PBT GF, UL 94V-0 , BLACK COLOR
 SIGNAL CONTACT : COPPER ALLOY, GOLD FLASH
 METAL WATERTIGHT FRAME : PBT GF, UL 94V-0, BLACK COLOR
 O-RING : SILICONE
 EPOXY SEALANT : EPOXY
 HIGH POWER CONTACT : COPPER ALLOY 15u" GOLD PLATED

ELECTRICAL CHARACTERISTICS
 HIGH POWER CONTACT CURRENT RATING : 40 AMPS
 HIGH POWER CONTACT RESISTANCE : 1.0 mΩ MAX.
 DIELECTRIC WITHSTANDING VOLTAGE : 1000 V AC FOR 1 MINUTE
 INSULATION RESISTANCE : 5GΩ MIN.
 TEMPERATURE RATING : -40°C ~ +105°C
 DEGREE OF PROTECTION : IP67 ACCORDING TO IEC60529



WDWS-S40-03W3-LF

LEADFREE

RoHS Compliant

MORETHANALL
 CONNECTORS
 ASSEMBLIES

PART NO. WDWS-S40-03W3

DWG NO. WDWS-S40-03W3

FILE NO.

CHECKED BY CY

DRAWING BY

TOLERANCES ARE

.X ± 0.2
 .XX ±
 .XXX ±
 AWG

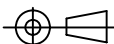
DESCRIPTION:

煜倫股份有限公司

UNIT / mm

SCALE 1:1

PROJECTION



AREA

REVISIONS

HK

DATE