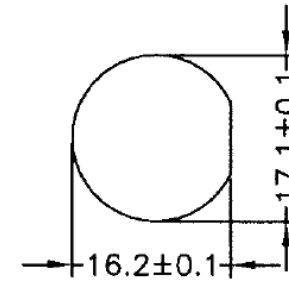
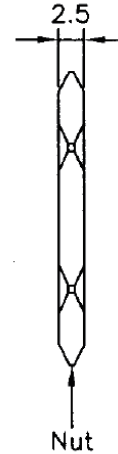
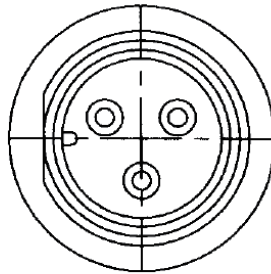
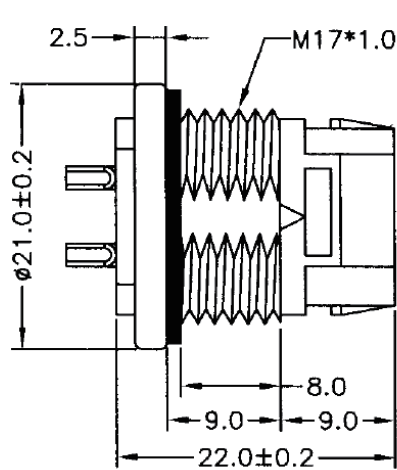


MOUNT OUTER TYPE 外鎖



RECOMMENDED PANEL CUT-OUT
Applicable Panel Board Thickness:
2.0~4.0mm

MATERIAL

Insulator: NYLON66 UL94V-0 +GF Black
Contact: Brass Gold flash over nickel plated
Optional Plating available but MOQ requested

SPECIFICATIONS

Current Rating: 2~3P(10A AC, DC)
4~6P(5A AC, DC)
2+5P(7A+3A)
7~18P(2A AC, DC)

CIRCUITS	2P	3P	4P	5P	6P	2+5P	18P
ARRANGEMENT OF CONTACT							
SERIES	W12-PSPB-02	W12-PSPB-03	W12-PSPB-04	W12-PSPB-05	W12-PSPB-06	W12-PSPB-2+5	W12-PSPB-18

W12-PSPB-xx-LF
02~18WAY LEADFREE
RoHS Compliant

MORETHANALL
CONNECTORS
ASSEMBLIES

PART NO. W12-PSPB-xx		CHECKED BY CY		TOLERANCES ARE X.± .X± .XX± .XXX± ANG	DESCRIPTION:
DWG NO. W12-PSPB-xx		DRAWING BY			
FILE NO.		PROJECTION		AREA	REVISIONS
UNIT / mm	SCALE 1:1			DATE	

煜倫股份有限公司