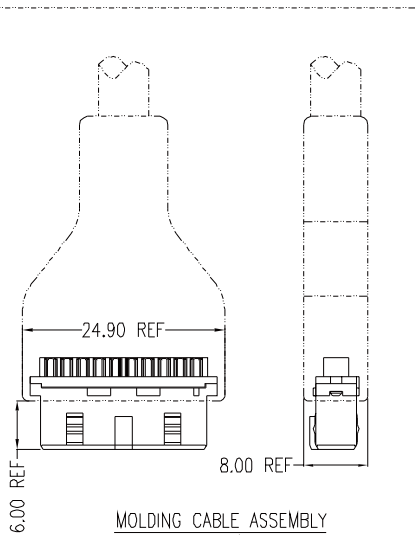
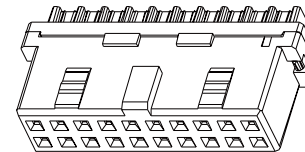
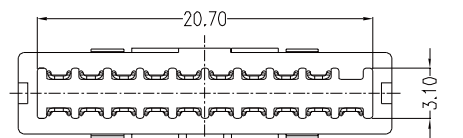
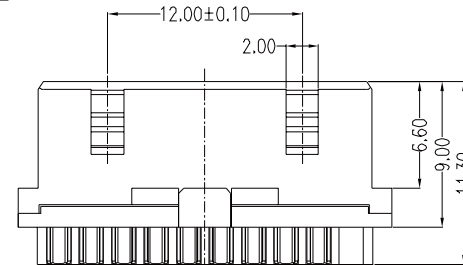
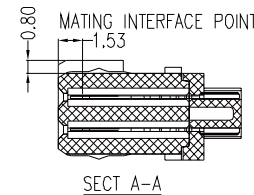
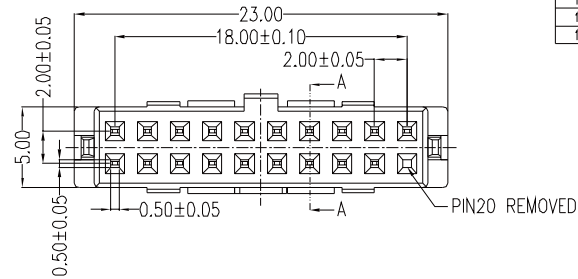
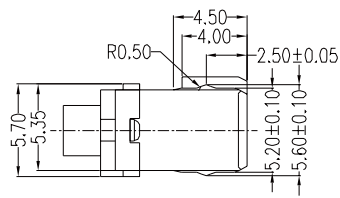


PIN NO.	SIGNAL	DESCRIPTION
1	Vbus	Power
2	IntA_P1_SSRX-	USB 3 ICC Port1 SuperSpeed Rx-
3	IntA_P1_SSRX+	USB 3 ICC Port1 SuperSpeed Rx+
4	GND	GND
5	IntA_P1_SSTX-	USB 3 ICC Port1 SuperSpeed Tx-
6	IntA_P1_SSTX+	USB 3 ICC Port1 SuperSpeed Tx+
7	GND	GND
8	IntA_P1_D-	USB 3 ICC Port1 D-(USB2 Signal D-)
9	IntA_P1_D+	USB 3 ICC Port1 D+(USB2 Signal D+)
10	ID	Over Current Protection
11	IntA_P2_D+	USB 3 ICC Port2 D+(USB2 Signal D+)
12	IntA_P2_D-	USB 3 ICC Port2 D-(USB2 Signal D-)
13	GND	GND
14	IntA_P2_SSTX+	USB 3 ICC Port2 SuperSpeed Tx+
15	IntA_P2_SSTX-	USB 3 ICC Port2 SuperSpeed Tx-
16	GND	GND
17	IntA_P2_SSRX+	USB 3 ICC Port2 SuperSpeed Rx+
18	IntA_P2_SSRX-	USB 3 ICC Port2 SuperSpeed Rx-
19	Vbus	Power



NOTES:

***Material**

Housing: PBT+30%G.F, UL 94V-0 Rated; Color: Black

Baffle : Nylon66+30%G.F, UL 94V-2 Rated Color: Black

Contact: Brass

Plating: Au plating on contact area;

Sn(100u" Min) plating on solder tail;

Ni(50u" Min.) underplating overall.

***Mechanical**

Insertion Force: 35N Max.

Withdrawal Force: 15N Min.

Durability: 25 cycles

***Electrical Specification**

Current Rating: 0.5A/Pin min Except That VBUS Pin is 1.5A.

Contact Resistance: 30mΩ max.Change of All Pins: 20mΩ

Insulation Resistance: 100MΩ min.

Dielectric Withstanding Voltage: 500V AC For 1 minute.

***Environmental**

Operating Temperature: -55°c to +105°c.

RoHS Compliant

TOLERANCES ARE

MORETHANALL
PCB CONNECTORS
Cable ASSEMBLIES

煜倫股份有限公司

www.morethanall.com

DRAWING BY CY

CHECKED BY GENIUS

UNIT/ mm

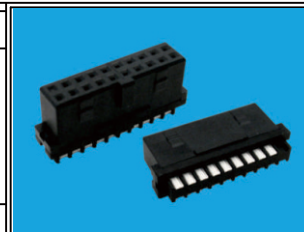
SCALE 1:1

DATE

SIZE A4

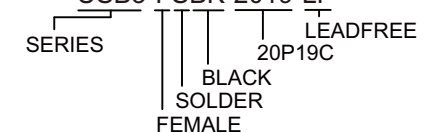
P PROJECTION

X, ±
.X ± 0.38
.XX ± 0.25
.XXX ± 0.20
ANG ± 3°



ORDER INFORMATION

USB3-FSBK-2019-LF



DESCRIPTION: Internal USB 3.0 Plug For Cable