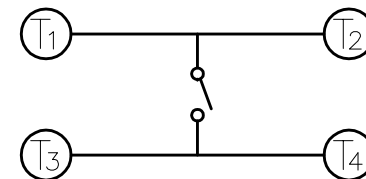
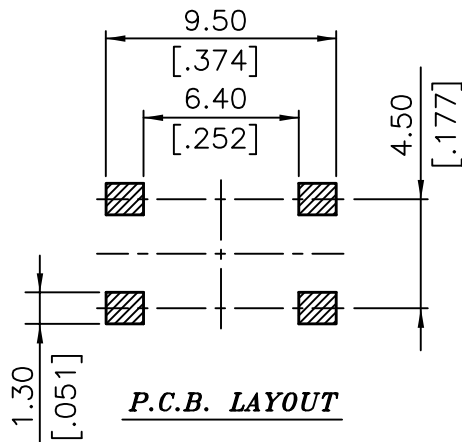
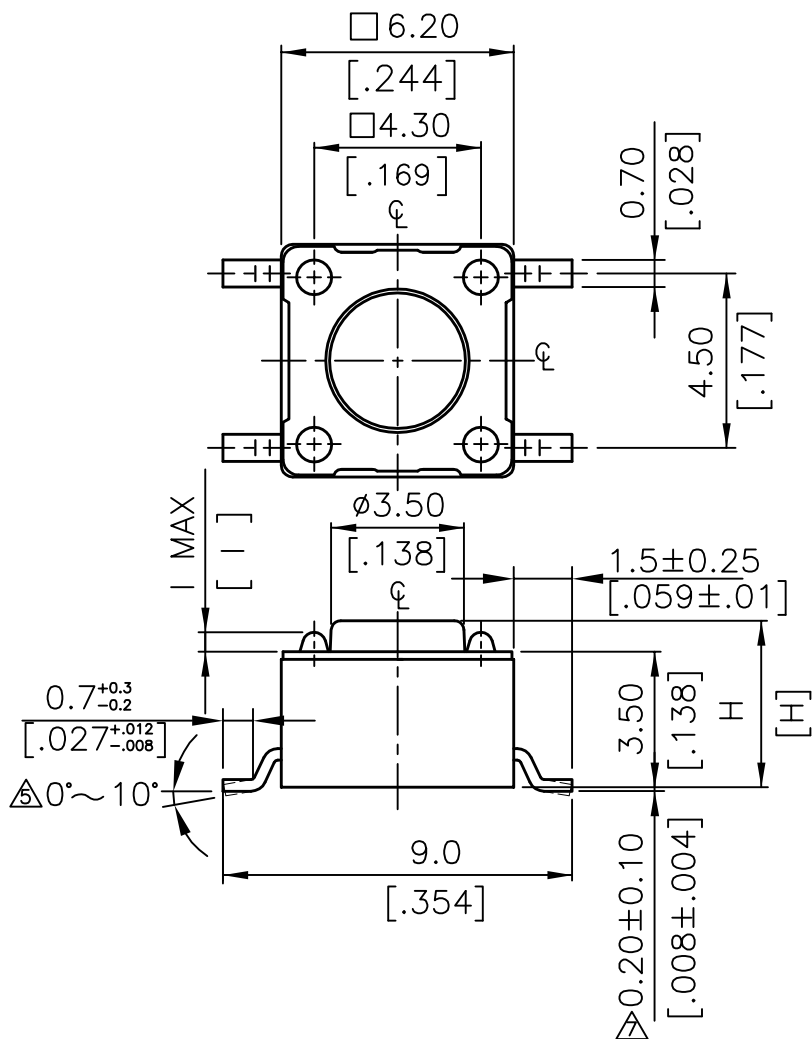


**NOTE:**

1. ALL DIMENSIONS ARE IN MILLIMETERS, BRACKETED DIMENSIONS ARE IN INCHES.
2. GENERAL TOLERANCES MAX.±0.20mm.
3. MATERIAL & □ : SEE PAGE 3 OF 3.



**CIRCUIT DIAGRAM**

TSW66-V130-160	13.0[.512]	0.6 MAX
TSW66-V095-160	9.5[.374]	0.6 MAX
TSW66-V070-160	7.0[.275]	0.6 MAX
TSW66-V050-160	5.0[.197]	0.6 MAX
TSW66-V043-160	4.3[.169]	0.5 MAX
PROD. NO.	H	I

	先銀壓後沖, 雙面銀壓(Ag/0.3uM MIN)
	先沖後鍍, (Ag/0.5uM MIN)

**RoHS Compliant**

TOLERANCES ARE

**MORETHANALL**  
PCB CONNECTORS  
Cable ASSEMBLIES

DRAWING BY CY

X.±

CHECKED BY GENIUS

.X±

UNIT / mm SCALE 1 : 1

.XX±

DATE

.XXX±

SIZE A4

PJECTION

ANG ±

照片框

**ORDER INFORMATION**

TSW66-Vxxx-160-LF

SERIES LEADFREE  
160g (BROWN)

043:4.3mmHIGH

050:5.0mmHIGH

095:9.5mmHIGH

130:13.0mmHIGH

180°SMT

DESCRIPTION: TACTILE SWITCH SMT TYPE 6X6

煜倫股份有限公司

www.morethanall.com