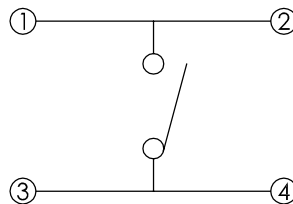
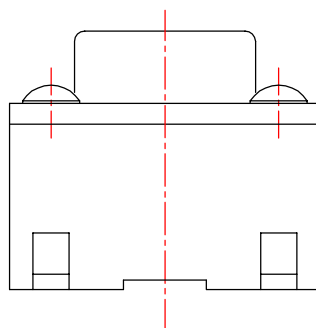
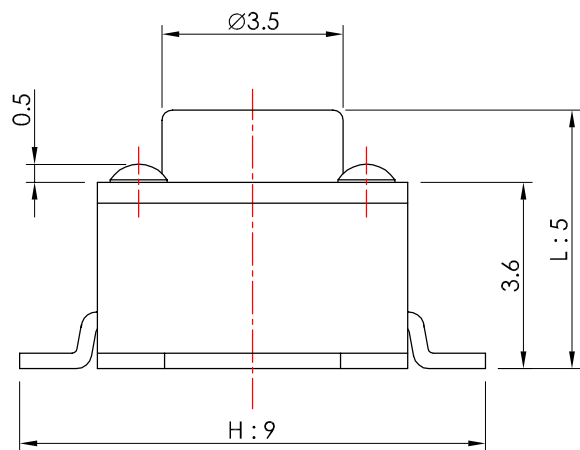
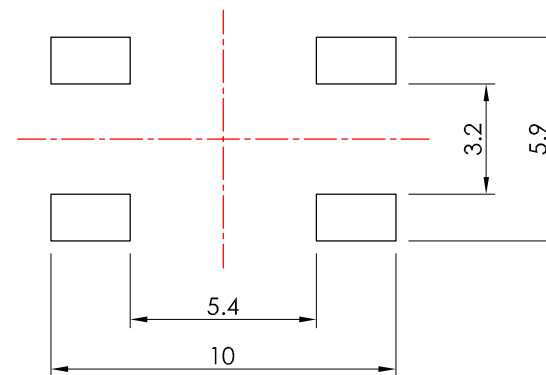


CIRCUIT DIAGRAM



P.C.B. LAND PATTERN



SPECIFICATION

Rating: 50mA 12V DC Max.

Circuit: SPST.

Travel: 0.25±0.1mm.

Contact resistance: 100mΩ Max. (initial)

Operating force: 160±50g.

Minimum load: 10mA 3.3V DC. (reference only)

Operation life: 100,000 Cycles Min.

Soldering temperature: 250°C Max for 3 Sec.

Soldering time: 1 time only.

TSW66-V50-xxx-LF

LEADFREE

100:100g
130:130g
160:160g
250:250g

MORETHANALL
CONNECTORS
ASSEMBLIES

PART NO. TSW66-V50-xxx

DWG NO. TSW66-V50-xxx

FILE NO.

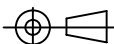
UNIT / mm

SCALE 1:1

CHECKED BY CY

DRAWING BY

PROJECTION



TOLERANCES ARE

.X ± 0.2
.XX ±
.XXX ±
AWG

DESCRIPTION:

AREA

REVISIONS

HK

DATE

焯倫股份有限公司