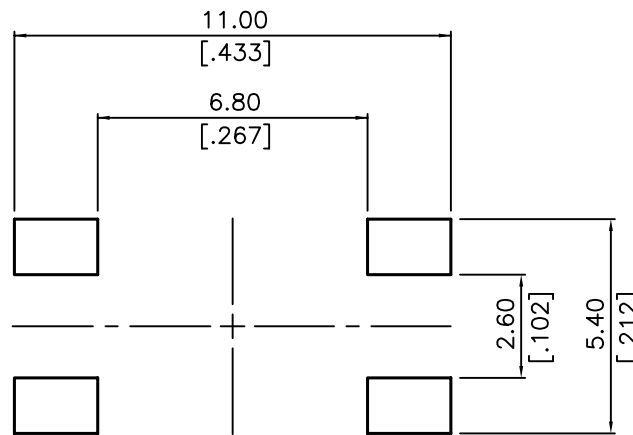
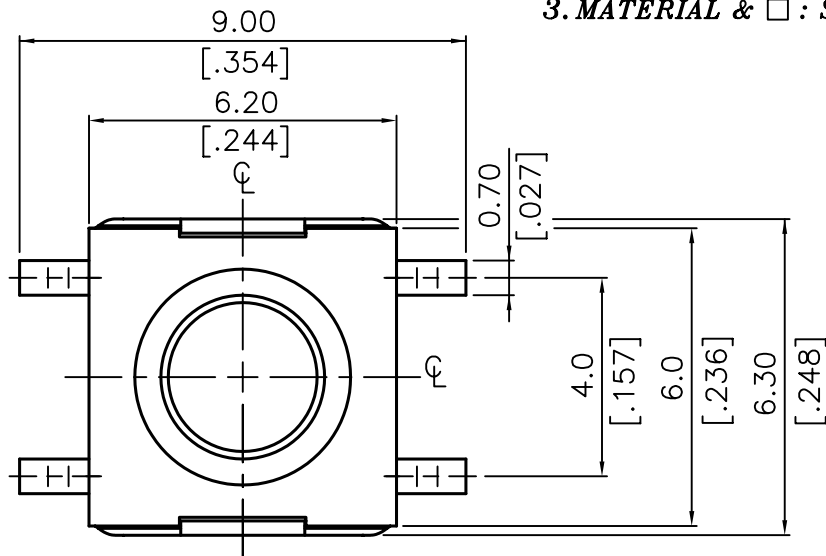


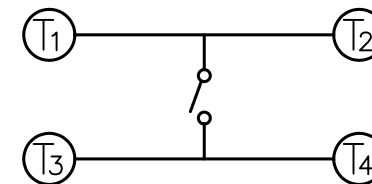
NOTE:

1. ALL DIMENSIONS ARE IN MILLIMETERS, BRACKETED DIMENSIONS ARE IN INCHES.
2. GENERAL TOLERANCES MAX.±0.20mm.
3. MATERIAL & □ : SEE PAGE 3 OF 3.

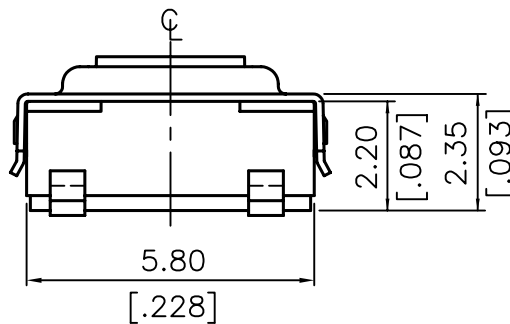
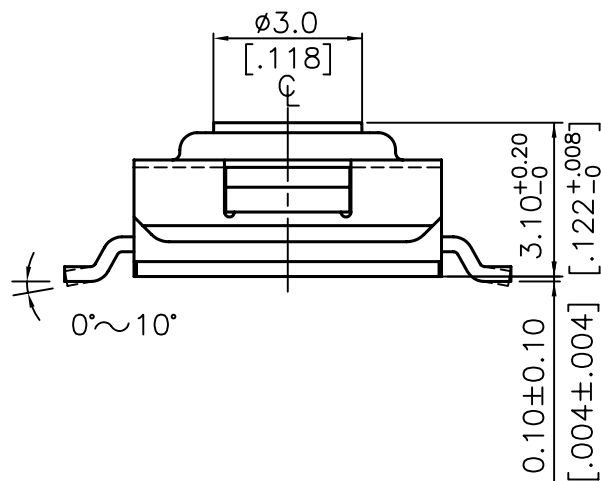


(SCALE 8:1)

P.C.B. LAYOUT



CIRCUIT DIAGRAM



TSW66-V32-160-LF
LEADFREE
RoHS Compliant



PART NO. **TSW66-V32-160**

DWG NO. **TSW66-V32-160**

FILE NO.

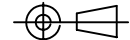
UNIT / mm

SCALE 1:1

CHECKED BY CY

DRAWING BY

PROJECTION



TOLERANCES ARE

- .X ±0.2
- .XX ±
- .XXX ±
- AWG

DESCRIPTION:

TACT SWITCH 6X6 SMT / WASHABLE TYPE (H=3.1mm)

AREA

REVISIONS

HK

DATE

煜倫股份有限公司