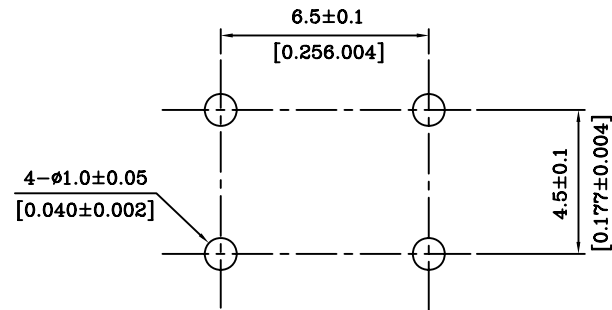
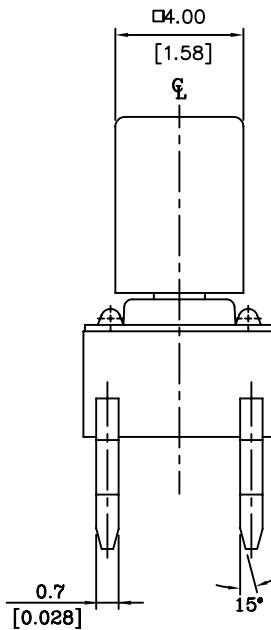
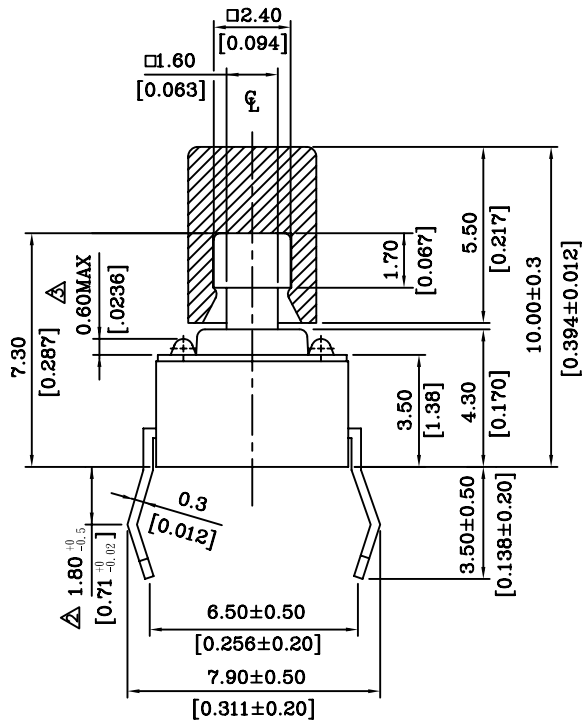
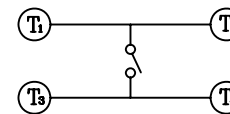


NOTE:

1. ALL DIMENSIONS ARE IN MILLIMETERS, BRACKETED DIMENSIONS ARE IN INCHES.
2. GENERAL TOLERANCES MAX. ±0.20mm.
3. MATERIAL & □: SEE PAGE 3 OF 3.



P.C.B LAYOUT

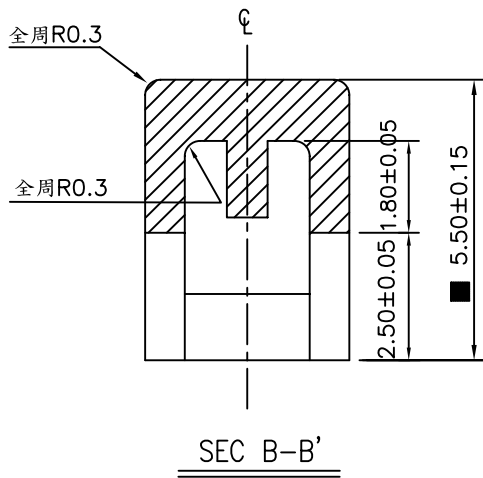
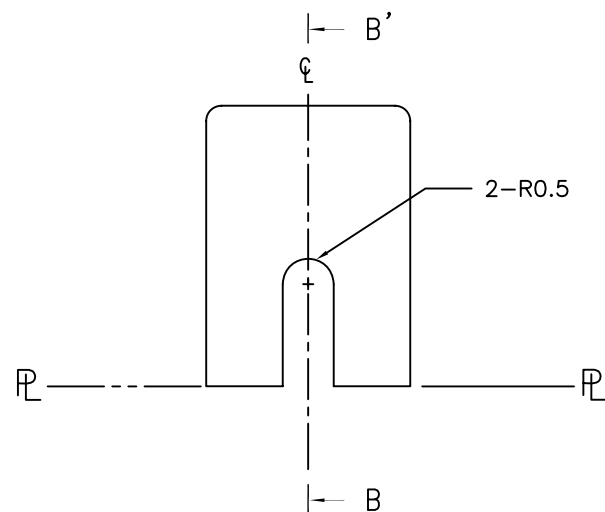


CIRCUIT DIAGRAM

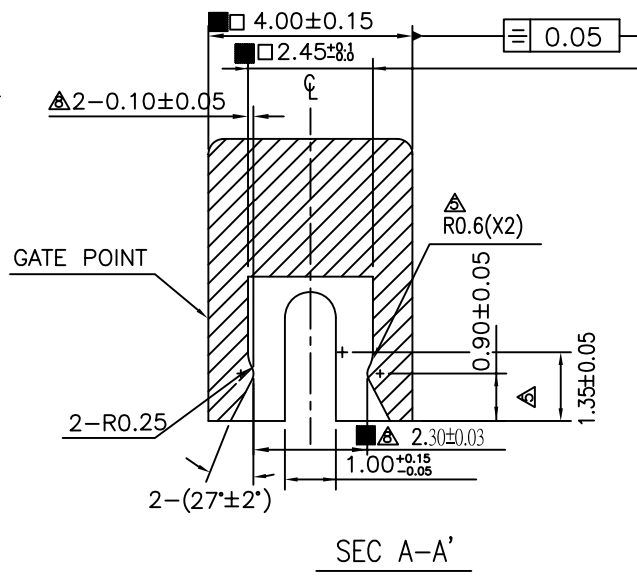
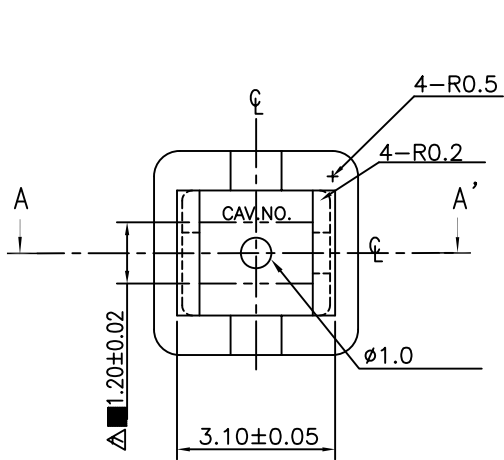
MORETHANALL
CONNECTORS
ASSEMBLIES

煜倫股份有限公司

PART NO. TSW66-KQ40-xx		CHECKED BY CY	TOLERANCES ARE X. ± .X ± .XX ± .XXX ± ANG	DESCRIPTION: TACTILE SWITCH 6X6 (MECHANICAL CONTACT TYPE)	AREA	REVISIONS	DATE
DWG NO. TSW66-KQ40-xx							
FILE NO.		PROJECTION					
UNIT / mm	SCALE 1:1						



NOTE:
1. General Tolerance: ±0.05mm.



TSW66-KQ40-xx-LF
LEADFREE

	COLOR	TYPE
YL	黄色 (YELLOW)	方形
BL	蓝色 (BLUE)	
RD	红色 (RED)	
IV	象牙色 (IVORY)	
BK	黑色 (BLACK)	
GR	绿色 (GREEN)	
OR	橙色 (SALMON) Δ	
GE	灰色 (GREY)	

RoHS Compliant

MORETHANALL
CONNECTORS
ASSEMBLIES

焯倫股份有限公司

PART NO. TSW66-KQ40-xx

DWG NO. TSW66-KQ40-xx

FILE NO.

UNIT / mm

SCALE 1:1

CHECKED BY CY

DRAWING BY

PROJECTION

TOLERANCES ARE

X, ±
.X ±
.XX ±
.XXX ±
ANG

DESCRIPTION: CAP (DTSK TYPE) 6X6

AREA

REVISIONS

DATE