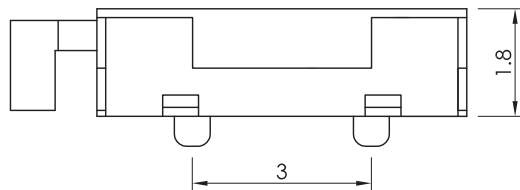
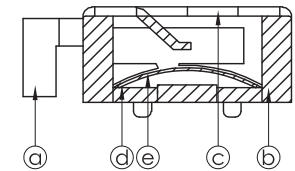
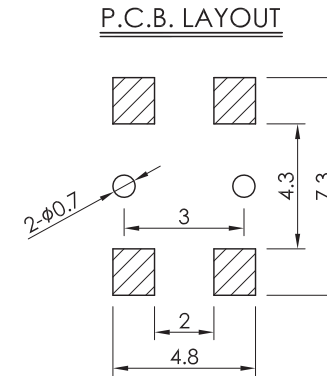
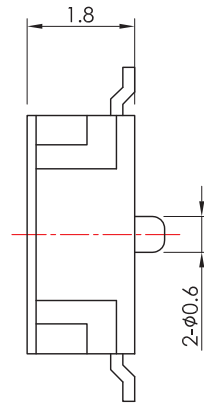
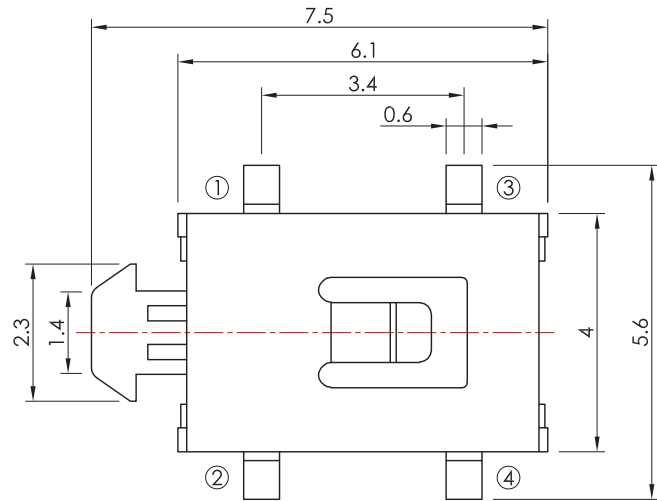
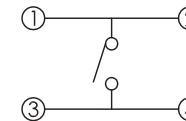


\*本圖面若與目錄之規格尺寸不符，以本圖面規格尺寸為主。  
Below is our main specification if different from catalog.



SCHEMATIC



**SPECIFICATION**

**Rating:** 50mA 12V DC.  
**Travel:** 0.25±0.05mm.  
**Contact resistance:** ≤50mΩ.(initial)  
**Insulation resistance:** ≥100MΩ.  
**Withstand voltage:** 250V AC for 1 minute.  
**Operating temperature:** -25°C ~ +70°C.  
**Operating force:** 250±50g.  
**Electrical life:** 50,000 Cycles Min.  
**Soldering temperature:** 250°C Max. for 3 sec.  
**Soldering time:** 1 time only.

**Note1:** Unwashable, don't be immersed by epoxy and organic solvent.  
**Note2:** Please check the actual size, do not scale the drawing page.

**MATERIAL**

**Stem:** PPA, black. ————— ①  
**Base:** LCP. ————— ②  
**Cover:** Stainless steel, natural. ————— ③  
**Contact:** Stainless steel, Ag plated. ————— ④  
**Tape:** Polyimide, yellow. ————— ⑤

**STORAGE METHOD**

After opening the bag of the switches, please include a desiccant into the bag, then seal it to avoid product oxidation.  
打開包裝袋後，請在袋中加入乾燥劑並「密封」，避免產品氧化。

**RoHS Compliant**

TOLERANCES ARE

**MORETHANALL**  
PCB CONNECTORS  
Cable ASSEMBLIES

DRAWING BY CY

CHECKED BY GENIUS

UNIT / mm SCALE 1 : 1

DATE

SIZE A4

X, ±  
.X ± 0.30  
.XX ± 0.20  
.XXX ±  
ANG ±

PJECTION

照片框

**ORDER INFORMATION**

**TSW46-W18P-250-LF**  
SERIES | | | LEADFREE  
| | | 250g  
| | | POST  
| | | HIGH 1.8mm  
| | | 90°SMT

DESCRIPTION: Tact Switc

煜倫股份有限公司

www.morethanall.com