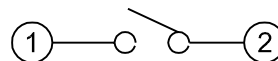
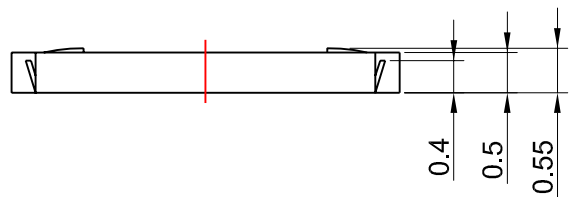


CIRCUIT DIAGRAM

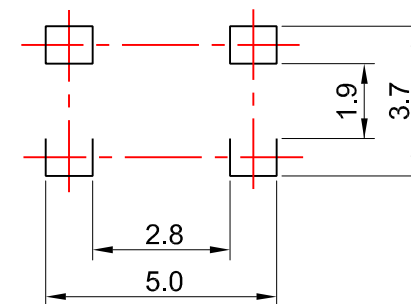


SPECIFICATION

Rating: 50mA, DC 12V Max.
 Circuit: SPST.
 Travel: 0.2±0.1mm.
 Contact resistance: 100mΩ Max.
 Operating force: 160±30g.
 Life: 100,000 Cycles Min.
 Tolerance: .XX=±0.2mm, .X=±0.3mm.



P.C.B LAND DIMENTION



RoHS Compliant

TOLERANCES ARE

MORETHANALL
 PCB CONNECTORS
 Cable ASSEMBLIES

煜倫股份有限公司

www.morethanall.com

DRAWING BY CY

CHECKED BY GENIUS

UNIT / mm

SCALE 1 : 1

DATE

SIZE A4

P PROJECTION

X, ±
 .X ±
 .XX ±
 .XXX ±
 ANG ±

照片框

ORDER INFORMATION

TSW44-V05-160-LF

SERIES | LEADFREE
 160g
 HIGH 0.55mm
 180°SMT

DESCRIPTION: TACT SWITCH