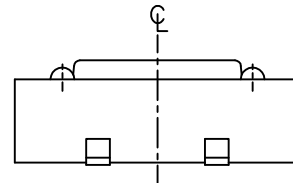
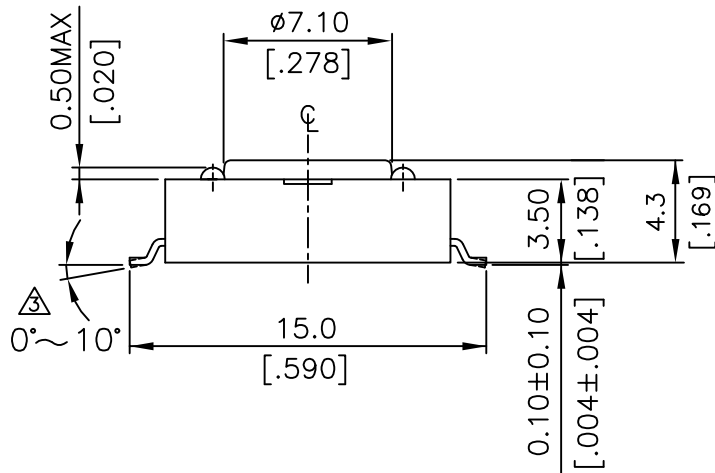
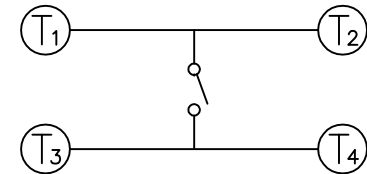
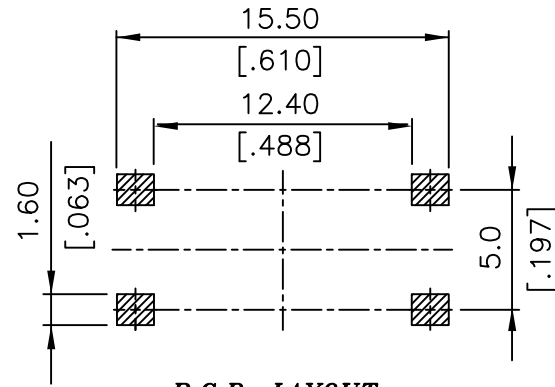
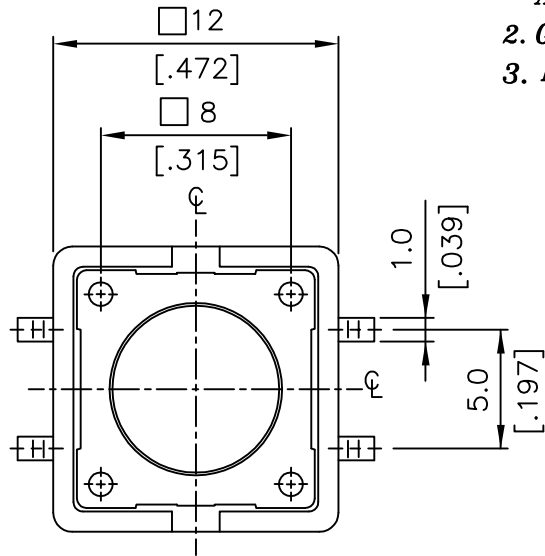


NOTE:

1. ALL DIMENSIONS ARE IN MILLIMETERS, BRACKETED DIMENSIONS ARE IN INCHES.
2. GENERAL TOLERANCES MAX. ±0.20mm.
3. MATERIAL & □: SEE PAGE 3 OF 3.



RoHS Compliant

TOLERANCES ARE

MORETHANALL
PCB CONNECTORS
Cable ASSEMBLIES

DRAWING BY CY

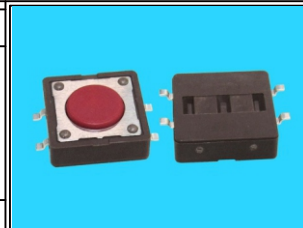
CHECKED BY GENIUS

UNIT / mm SCALE 1 : 1

DATE

SIZE A4 PROJECTION

X. ±
.X ±
.XX ±
.XXX ±
ANG ±



ORDER INFORMATION

TSW1212-V043-260-LF

SERIES | LEADFREE
260g
HIGH 4.3mm
180°SMT

煜倫股份有限公司

www.morethanall.com

DESCRIPTION: TACTILE SWITCH SMT TYPE 12X12