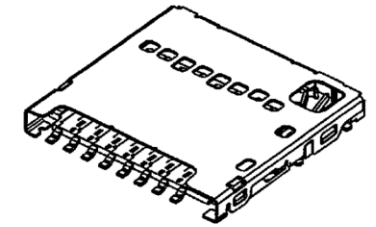
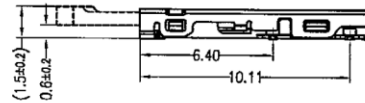
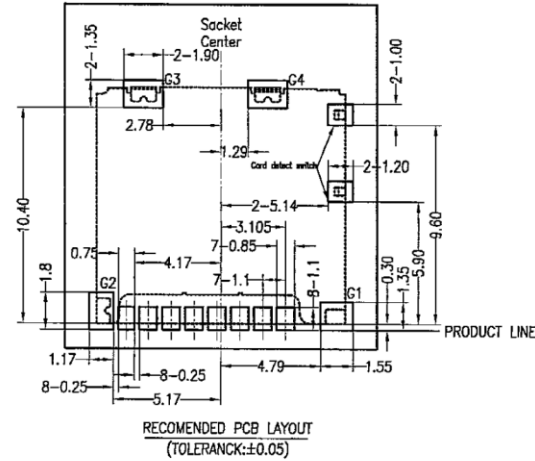
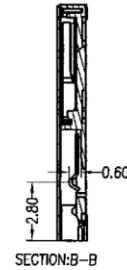
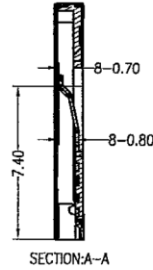
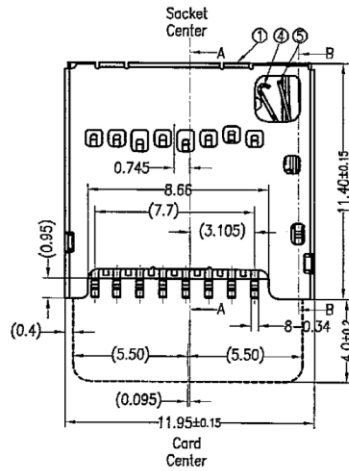
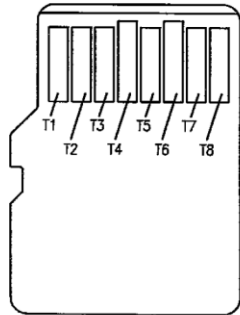


micro SD CARD
[Back View]



card insertion conation	card detect switch	Circuit Switch terminal Detect terminat
Without Card	open	
Card insertion	Close	

[micro SD CARD PIN-MAP]

PIN NUMBER	DESCRIPTION
T1	DAT2
T2	CD/DAT3 ²
T3	CMD
T4	V _{cc}
T5	CLK
T6	V _{ss}
T7	DAT0
T8	DAT1

SPECIFICATION

CURRENT RATING: 0.5 AMP MAX
 DIELECTRIC WITHSTANDING: 500V AC FOR ONE MINUTE
 CONTACT RESISTANCE: 80m OHMS MAX
 INSULATION RESISTANCE: 1000M OHMS MIN AT DC 500V
 OPERATION TEMPERATURE: -25°C +85°C

5	SWITCH TERMINAL	PHOSPHOR BRONZE	CONTACT:GOLD 3u" SOLDER TAIL:GOLD 1u" MIN	UNDER PLATED NICKEL 50u"
4	DETECT TERMINAL	PHOSPHOR BRONZE		
3	CONTACT TERMINALS	PHOSPHOR BRONZE	CONTACT:GOLD 3u" SOLDER TAIL:GOLD 1u" MIN	
2	HOUSING	LIQUID CRYSTAL POLYMER	BLACK COLOR UL94V-0	
1	METAL SHELL	STAINLESS STEEL	NICKEL OVERALL 50u"	
NO	PARTS NAME	MATERIALS	FINISHES	

RoHS Compliant

TOLERANCES ARE

MORETHANALL
PCB CONNECTORS
Cable ASSEMBLIES

煜倫股份有限公司

www.morethanall.com

DRAWING BY CY

CHECKED BY GENIUS

UNIT / mm SCALE 1 : 1

DATE

SIZE A4

X, ±
 .X ± 0.30
 .XX ± 0.20
 .XXX ± 0.10
 ANG ±

PJECTION

照片框

ORDER INFORMATION

TFC-WXCE11B2-08-LF

SERIES | | | | LEADFREE
 | | | | 08WAY
 | | | | SWITCH OPEN X2
 90°SMT | | | | EAR 11.14mm
 | | | | C/LAYOHT
 | | | | NON PUSH PUSH

DESCRIPTION: