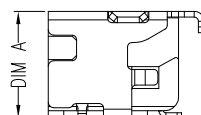
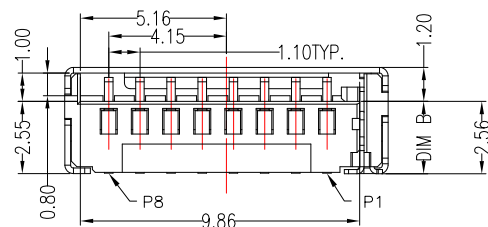


PCB LAYOUT

DIM A	DIM B
2.65	1.45
3.00	1.86



Pin No.	NAME
1	DAT2
2	CD/DAT3
3	CMD
4	VDD
5	CLK
6	VSS
7	DAT0
8	DAT1

SPECIFICATION

Electrical :

- 1.Contact Resistance: 50 mΩ Max.
- 2.Insulation Resistance: 1000 MΩ Min.
- 3.Dielectric Withstanding Voltage: 500V RMS.
- 4.Life Cycles: 1500 cycles Min
- 5.Mate Force: 4.5kgf Max
- 6.Unmate Force: 0.5kgf Min

Environmental:

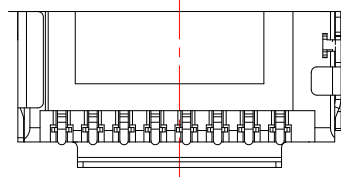
- 1.Operating Temperature: -25°C ~ +85°C.

Material:

- 1.Housing: LCP,Black
- 2.Contact: Copper Alloy
- 3.Shell: SPCC

Finish:

- 1.Contact: Plated Gold in Mating Area ;
Tin Plated on Solder Balls ;
Nickel under plated overall
- 2.Shell: Nickel under Plated surface layer



RoHS Compliant

TOLERANCES ARE

MORETHANALL
PCB CONNECTORS
Cable ASSEMBLIES

DRAWING BY CY

CHECKED BY GENIUS

UNIT / mm

SCALE 1 : 1

DATE

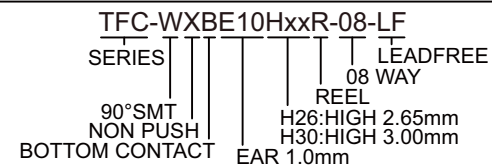
SIZE A4

PJECTION

Up to 5 ±0.2
Above 5 ~ 15 ±0.3
Above 15 ~ 30 ±0.4
Above 30 ~ 50 ±0.5
Angle ±0.3°

照片框

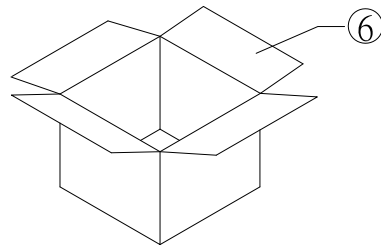
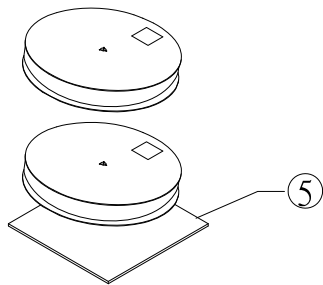
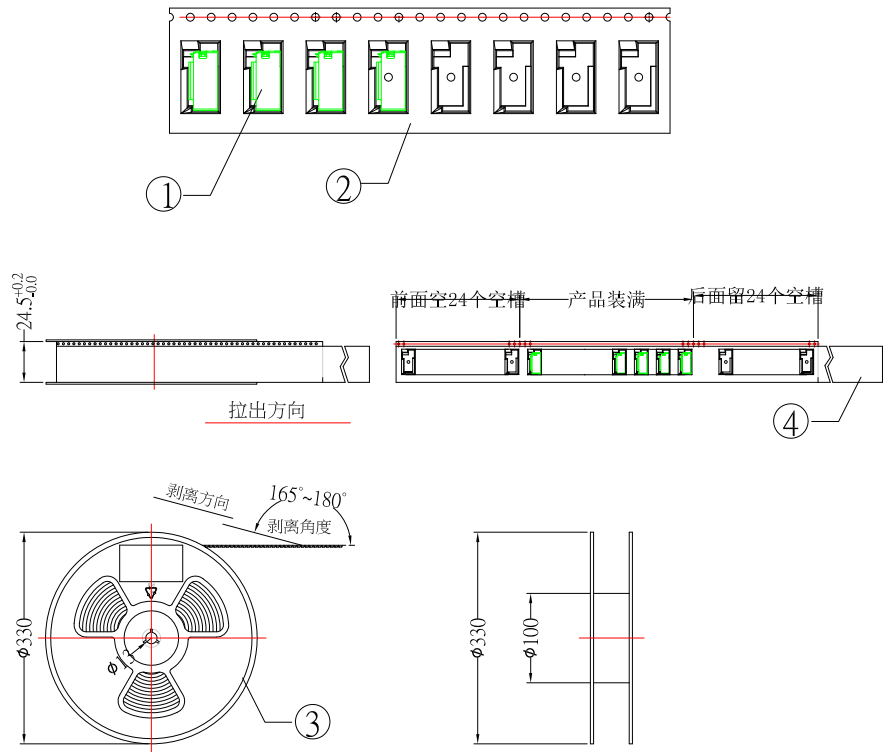
ORDER INFORMATION



DESCRIPTION: MICRO SD 卡 短體不帶偵測PIN

煜倫股份有限公司

www.morethanall.com



1. 包裝方式:

- 1.1. 使用半自動包裝機,先將卷帶送入導軌中,並與保護帶貼合在上面,其中初始15個空槽不要放產品,然後將產品如圖所示方向依次放入卷帶內,每個槽放1PCS,每卷共包裝產品1200PCS,最後需留24個空槽不放產品.
- 1.2. 用膠帶將卷帶黏在一起,在卷盤上貼上標籤,註明品名,日期,數量
- 1.3. 依圖示,將10盤已裝好成品的卷帶,1PCS紙板裝入紙箱中,其中卷盤上貼好標籤的面要求朝上方式平放置;然後用膠帶封箱,並在側壁上註明相關內容.
- 1.4. 每箱裝10盤,一卷盤裝產品1200PCS,一箱裝產品12000PCS.

序号	品名	规格	数量
①	TF-簡易卡座	TF-2.65簡易卡座	1200PCS
②	卷帶	W=24.0*P=20.0*T=0.30	18600MM
③	卷盤	□300*□100*24.5mm	1 PCS
④	保護帶	PET,W=21.3mm, 熱封式	
⑤	紙板	L=34*W=34*T=3	1 PCS
⑥	紙箱	L=34.5*W=34.5*H=31CM	1 PCS

RoHS Compliant

TOLERANCES ARE

MORETHANALL
PCB CONNECTORS
Cable ASSEMBLIES

DRAWING BY CY

CHECKED BY GENIUS

UNIT / mm

SCALE 1 : 1

DATE

SIZE A4

PPOJECTION

Up to 5 ±0.2
Above 5 ~ 15 ±0.3
Above 15 ~ 30 ±0.4
Above 30 ~ 50 ±0.5
Angle ±0.3°

照片框

ORDER INFORMATION

TFC-WXBE10HxxR-08-LF

SERIES | | | | | LEADFREE

08 WAY

REEL

H26: HIGH 2.65mm

H30: HIGH 3.00mm

EAR 1.0mm

90°SMT
NON PUSH
BOTTOM CONTACT

DESCRIPTION: REEL PACKING

煜倫股份有限公司

www.morethanall.com