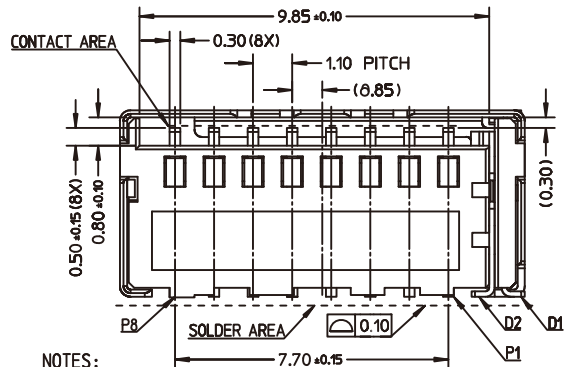


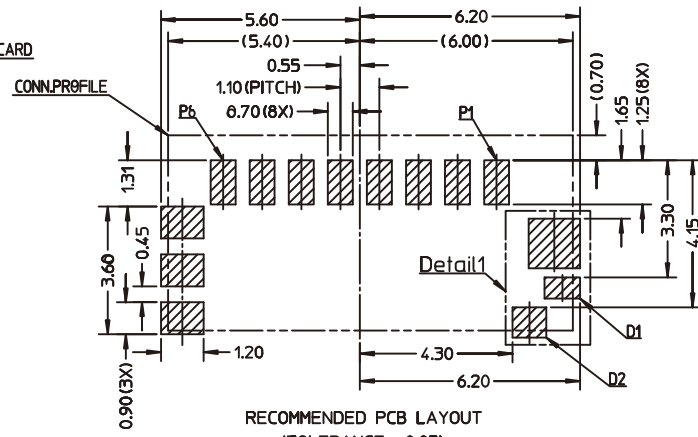
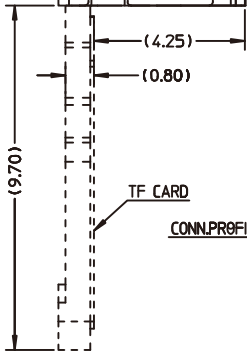
T_FLASH CARD DIMENSIONS
TOLERANCE: ±0.05



NOTES:

- MATERIAL:
HOUSING--LCP GLASS FILLED, UL 94V-0, BLACK
TERMINALS; DETECT PINS--COPPER ALLOY; SHELL--STAINLESS STEEL
- PLATING:
TERMINAL--0.38 MICRON MIN. GOLD PLATING ON CONTACT AREA,
GOLD FLASH(0.025-0.076 MICRON) ON SOLDER TAIL AREA,
ALL OVER 1.27 MICRON MIN. NICKEL UNDERPLATING.
DETECT PINS--GOLD FLASH (0.025-0.076 MICRON) ON CONTACT AREA,
GOLD FLASH (0.025-0.076 MICRON) ON SOLDER TAIL AREA,
ALL OVER 1.27 MICRON MIN. NICKEL UNDERPLATING.
SHELL--GOLD FLASH(0.025-0.076 MICRON) ON SOLDER TAIL AREA,
ALL OVER 0.76 MICRON MIN. NICKEL UNDERPLATING.
- CONTACT PIN ASSIGNMENT:SEE TABLE A.

THIS PRODUCT SHOULD MEET HAZARDOUS MATERIAL CONTROL DIRECTIVE OF JTCONN, FROM RAW MATERIAL TO MANUFACTURING, PACKAGE AND DELIVERY.



RECOMMENDED PCB LAYOUT
(TOLERANCE: ±0.05)

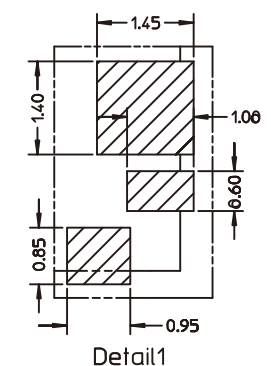


TABLE A:	
PIN NO.	PIN NAME
PIN 1	DAT 2
PIN 2	CD/DAT 3
PIN 3	CMD
PIN 4	VDD
PIN 5	CLK
PIN 6	VSS
PIN 7	DAT 0
PIN 8	DAT 1

RoHS Compliant

TOLERANCES ARE



煜倫股份有限公司

www.morethanall.com

DRAWING BY CY

CHECKED BY GENIUS

UNIT / mm SCALE 1 : 1

DATE

SIZE A4

X, ± 0.50
X, ± 0.30
.XX ± 0.20
.XXX ±
ANG ±

P PROJECTION

照片框

ORDER INFORMATION

TFC-WXBE10H53B-08-LF
SERIES | | | | | | | | | | LEADFREE
| | | | | | | | | | 08 WAY
| | | | | | | | | | SWITCH OPEN
90°SMT HIGH 5.25mm
NON PUSH EAR 1.0mm
BOTTOM CONTACT

DESCRIPTION: TF HEADER WITH DETECT PIN