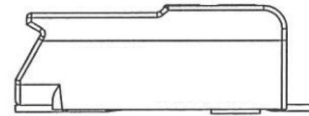
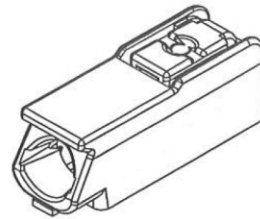
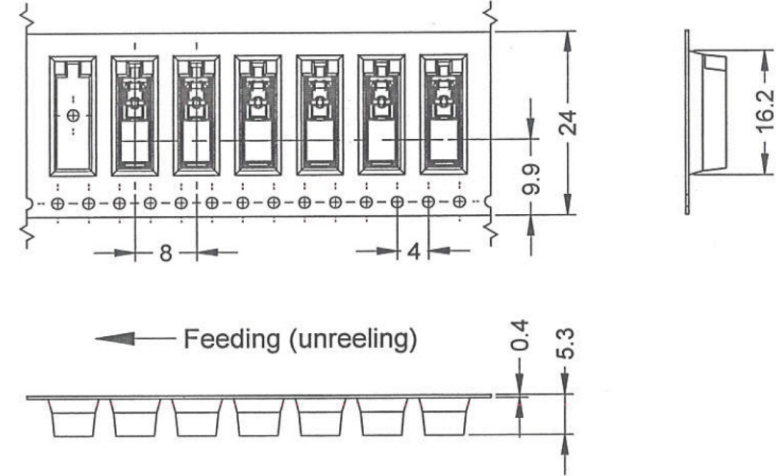
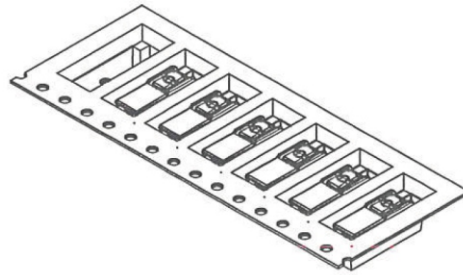
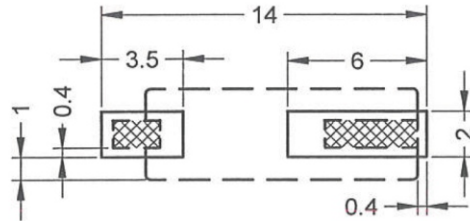
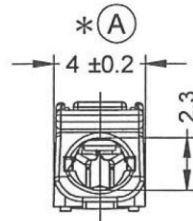
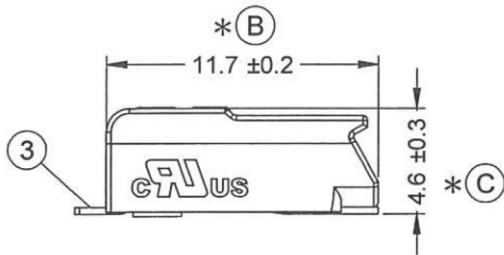
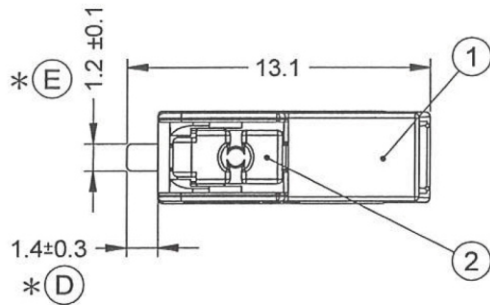


recommended PCB Layout



Current rating : 9Amp 600V
 Insulation withstands volt : AC1500V min
 Insulation resistance : >2000MΩ DC500V
 Lower/Upper temperature : -60°C / +105°C
 Wire range: 18~24 AWG
 Wire strip length: 8~9mm
 Reel Diameter: 13" (330mm)
 Per reel / pcs : 1300 pcs



	Material	Plating/Finish	Remark
1	Insulating body PA9T(UL94V-0)		Gray
2	Button PA9T(UL94V-0)		Gray
3	Contact Copper alloy	Tin plated	

RoHS Compliant

TOLERANCES ARE

MORETHANALL
 PCB CONNECTORS
 Cable ASSEMBLIES

煜倫股份有限公司

www.morethanall.com

DRAWING BY CY

CHECKED BY GENIUS

UNIT / mm SCALE 1 : 1

DATE

SIZE A4

X, ±
 .X ±
 .XX ±
 .XXX ±
 ANG ±

PJECTION

照片框

ORDER INFORMATION

TBX040-W04R-01-LF
 SERIES | | | LEADFREE
 | | | 01 WAY
 | | | REEL
 | | | HIGH 4.6mm
 | | | 90°SMT

DESCRIPTION: