

Total Pitch Tolerances		Normal Dimension Tolerances	
0~30	±0.20	0~30	±0.25
over 30~53	±0.25	over 30~53	±0.30
over 53~70	±0.30	over 53~70	±0.35
over 70~90	±0.35	over 70~90	±0.44
over 90~115	±0.44	over 90~115	±0.55
over 115~150	±0.55	over 115~150	±0.70
over 150~200	±0.70	over 150~200	±0.85
over 200~250	±0.85	over 200~250	±1.00
over 250~320	±1.00	over 250~320	±1.20

NOTES1:

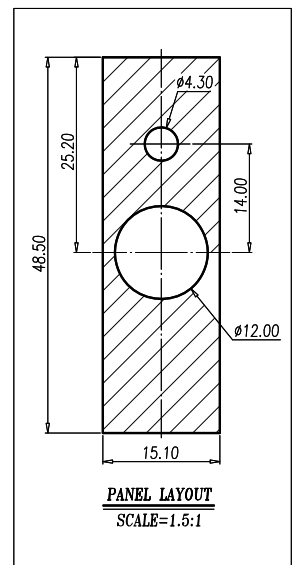
- UL Standard :
- Rating: 300V 115A
 - Insulation Withstands Voltage: AC 6000V at 1 minute
 - Using Temperature Range: -40°C~+115°C
 - Suitable Electric Wire: AWG 8~2
 - Screw Torque Value: Inner: 3.38~3.9N·m Outer: 3.0N·m

IEC Standard:

- Rating: 400V 125A
- Rate Impulse Voltage: 8000V
- Insulation Resistance: 500M Ω or more at DC500V
- Material Group : I
- Pollution Degree : 3
- Overvoltage Category: III
- Using Temperature Range: -40°C~+120°C
- Suitable Electric Wire: 6~35mm²
- Screw Torque Value: Inner: 4.0 N·m Outer: 3.0 N·m

NOTES2:

- RoHS compliance
- Strip Length: 19mm



8	SCREW 2	STEEL	M6/Zn Plated
7	FIXER	PA	UL94-V0 GRAY
6	CUSHION	EVA	BLACK
5	SCREW 1	STEEL	M5/Zn Plated
4	CURRENT BAR	COPPER ALLOY	Tin Plated
3	WIRE CAGE	STEEL	Zn Plated
2	HOUSING 2	PA	UL94-V0 GRAY
1	HOUSING 1	PA	UL94-V0 GRAY
ITEM	NAME OF PART	MATERIAL	NOTES

RoHS Compliant

TOLERANCES ARE

MORETHANALL
PCB CONNECTORS
Cable ASSEMBLIES

DRAWING BY CY

X, ±

CHECKED BY GENIUS

.X ±

UNIT / mm

SCALE 1 : 1

.XXX ±

DATE

ANG ±

SIZE A4

PPOJECTION

煜倫股份有限公司

www.morethanall.com

照片框

ORDER INFORMATION

TBP151-D25S-01-LF

SERIES

LEADFREE

01 WAY

PCB 25mm+SCREW

DIP 180°

DESCRIPTION: