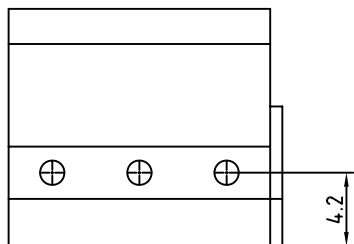


N=Number of contacts



Technical Data:

Material:

- Contact(metal housing): Brass(CuZn)
- Terminal screw: Steel galvanized and achromatized or Nickel plated or tin plated(standard)(optian)
- Wire guard: Beryllium Copper
- Surface of solder tail: tin plated
- Insulator body(housing): Polyamide(Glass filled)(UL94V-0)

Electrical

- Voltage rating: 250VAC
- Current rating: 10 Amps/way max
- Contact resistance: 20mΩ(max)
- Insulation resistance: 5000MΩ/1000V
- Withstanding Voltage: 1500VAC(1min) Test time=60sec/1pcs
- Wire range: 14-22AWG

Mechanical:

- Torque: 4kgf.cm/M2.6
- Operating temperature: -33°C to +120°C
- Soldering reliability:
Test temperature= 250°C±10°C
5 seconds max

Safety approval deta:



RoHS Compliant

TOLERANCES ARE

MORETHANALL
PCB CONNECTORS
Cable ASSEMBLIES

煜倫股份有限公司

www.morethanall.com

DRAWING BY CY

CHECKED BY GENIUS

UNIT / mm

SCALE 1 : 1

DATE

SIZE A4

PPOJECTION

X. ±
.X ±
.XX ±
.XXX ±
ANG ±



ORDER INFORMATION

TBN050-SW-xx-LF

SERIES

LEADFREE
02~24WAY
SCREW WIRE
FEMALE

DESCRIPTION: