

Technical Data:

Material:

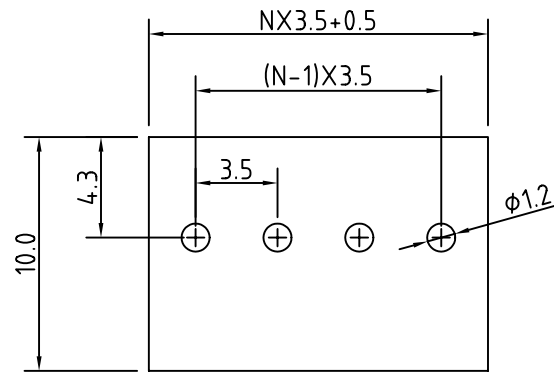
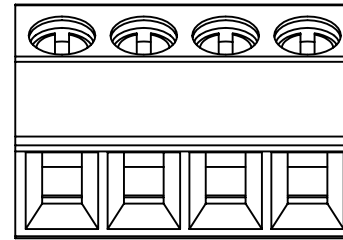
- Contact(metal housing): Brass Machined(Option)
- Terminal screw: Steel Galvanized and chromitized or Nickel plated or Tin plated(standard)(optian)
- Solder Pin: Brass with Tin plated
- Insulator body(housing): Polyamide(Glass filled)(UL94V-0)

Electrical

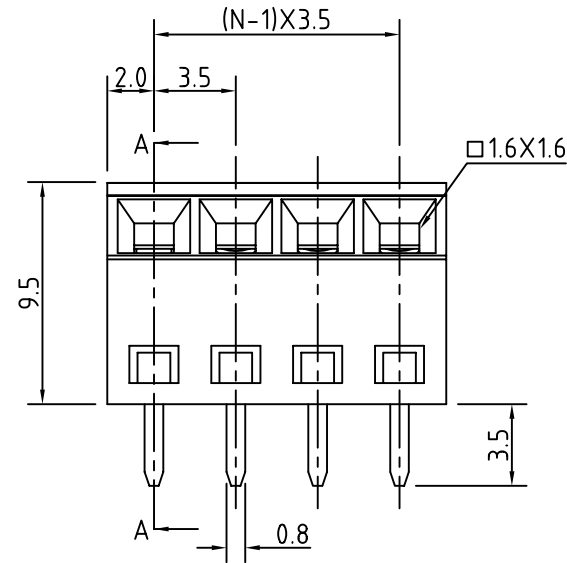
- Voltage rating: 300VAC
- Current rating: 10 Amps/way max
- Contact resistance: 20mΩ(max)
- Insulation resistance: 5000MΩ/1000V
- Withstanding Voltage: 1500VAC(1min) Test time=60sec/1pcs
- Wire range: 16-28AWG

Mechanical:

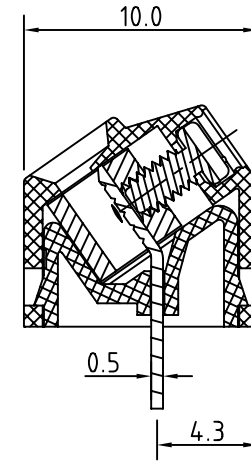
- Torque: 2kgf.cm/M2
- Operating temperature: -33°C to +120°C



P.C.B, LAYOUT



N=Number of contacts



SECTION A-A



PART NO. TBN035-A09-xx

DWG NO. TBN035-A09-xx

FILE NO.

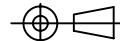
UNIT / mm

SCALE 1:1

CHECKED BY CY

DRAWING BY

PROJECTION



TOLERANCES ARE

.X ± 0.2

.XX ±

.XXX ±

AWG

DESCRIP TION:

AREA

REVISIONS

HK

DATE

煜倫股份有限公司