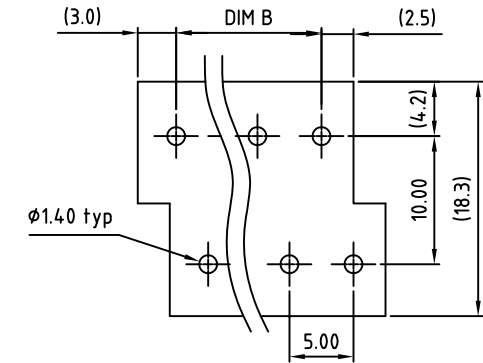
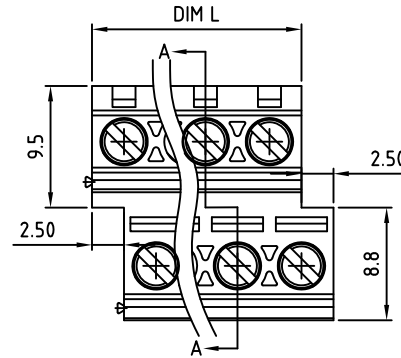


Material:

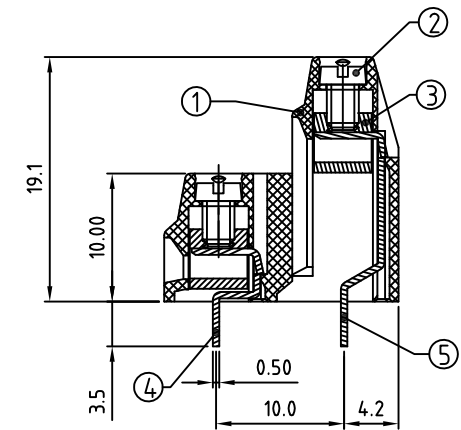
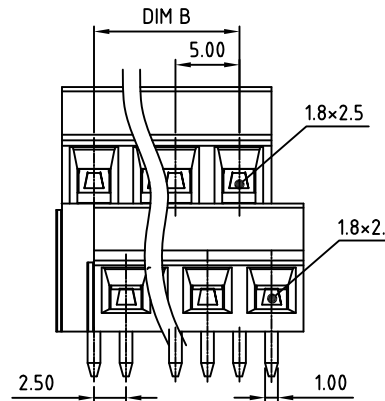
- Item 1 Insulating body Thermoplastic (UL94V-0)
- Item 2 Terminal screw Steel Zinc plating "-" slot type
- Item 3 Terminal body Brass, Ni plated
- Item 4 Contact on entry pin Brass, Tin plated
- Item 5 Contact on back pin Brass, Tin plated

Electrical

- Voltage rating: 300V
- Current rating: 10A
- Torque(Lb-In): 3.5
- Screw: M2.5
- Wrie range:
- SOLID WIRE(AWG): 16-26
- Stranded wire(AWG): 16-26
- Wire strip length: 6~7mm
- Withstanding Voltage:1.6kv
- Operating temperature: -30° C to +105° C
- Soldering reliability: 250° C ±10° C/5 Sec



P.C.B. LAYOUT



SECTION A-A

| | | | | | | | | | | | | |
|-------|-------|-------|-------|-------|-------|-------|-------|-------|-------|-------|-------|-------|
| Poles | 02 | 03 | 04 | 05 | 06 | 07 | 08 | 09 | 10 | 11 | 12 | 13 |
| Dim L | 10.00 | 15.00 | 20.00 | 25.00 | 30.00 | 35.00 | 40.00 | 45.00 | 50.00 | 55.00 | 60.00 | 65.00 |
| Dim B | 5.00 | 10.00 | 15.00 | 20.00 | 25.00 | 30.00 | 35.00 | 40.00 | 45.00 | 50.00 | 55.00 | 60.00 |
| TOL | ±0.15 | | | | ±0.25 | | | | ±0.35 | | | |
| Poles | 14 | 15 | 16 | 17 | 18 | 19 | 20 | 21 | 22 | 23 | 24 | |
| Dim L | 70.00 | 75.00 | 80.00 | 85.00 | 90.00 | 95.00 | 100.0 | 105.0 | 110.0 | 115.0 | 120.0 | |
| Dim B | 65.00 | 70.00 | 75.00 | 80.00 | 85.00 | 90.00 | 95.00 | 100.0 | 105.0 | 110.0 | 115.0 | |
| TOL | ±0.35 | | | | ±0.45 | | | | | | | |

RoHS Compliant

TOLERANCES ARE



煜倫股份有限公司

www.morethanall.com

DRAWING BY CY

CHECKED BY GENIUS

UNIT / mm SCALE 1 : 1

DATE

SIZE A4

PJECTION

X, ±
.X ±
.XX ±
.XXX ±
ANG ±



ORDER INFORMATION

TBH050B1-D10R-xx-LF

SERIES

DIP 180°
HIGH 10.0mm

LEADFREE
POS PER ROW
02:02 WAY
24:24 WAY
R TYPE FOOT

DESCRIPTION: