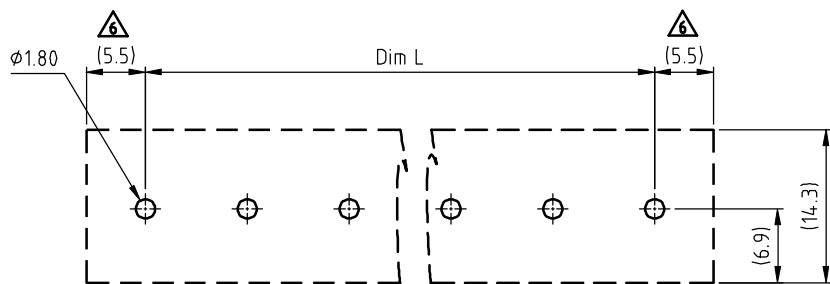
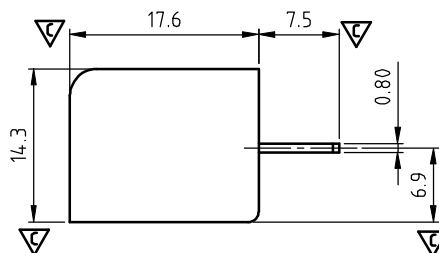
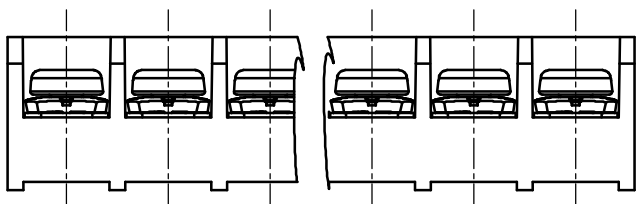


$\triangle 5$
 N = Number of poles
 Dim L = $N \times 9.5 + 1.5$
 Dim P = $(N - 1) \times 9.5$

Poles	Tol.	Dim L&P
2-4p		± 0.20
5-8p		± 0.25
9-16p		± 0.35
17-23p		± 0.40
24-30p		± 0.50



PCB Layout

- $\triangle 7$ MATERIALS ELECTRICAL: cULus CQC
 $\triangle 7$ RATED VOLTAGE & CURRENT: 300 V, 30A / 300V 24A $\triangle 8$
 WITHSTAND VOLTAGE: AC2500V/min $\triangle 8$
 INSULATION RESISTANCE: 1000 M Ω OR MORE AT DC 500 V
 OPERATING TEMPERATURE RANG: -40 °C ~ +115 °C
 SCREW TORQUE VALUE: 10.54 Lb-In. / 0.8Nm $\triangle 8$
 $\triangle 2$ WIRE RANGE: 22 - 10 AWG / 22-14 AWG $\triangle 4$
 1) MOLDED PARTS: Thermoplastic, UL 94 V-0 BLACK
 2) TERMINAL: BRASS, 0.8t, Tin PLATED
 3) TERMINAL SCREWS: STEEL, M3.5
 $\triangle 3$ Critical dimension: $\triangle 7$
 $\triangle 4$ APPROVAL:

RoHS Compliant

TOLERANCES ARE

MORETHANALL
 PCB CONNECTORS
 Cable ASSEMBLIES

煜倫股份有限公司

www.morethanall.com

DRAWING BY CY

CHECKED BY GENIUS

UNIT / mm SCALE 1 : 1

DATE

SIZE A4

X. ± 0.50

.X ± 0.30

.XX ± 0.10

.XXX \pm

ANG $\pm 1^\circ$

PJECTION

照片框

ORDER INFORMATION

TBC095-U-xx-LF

SERIES | LEADFREE
 02-30WAY
 UP/RIGHT

DESCRIPTION: