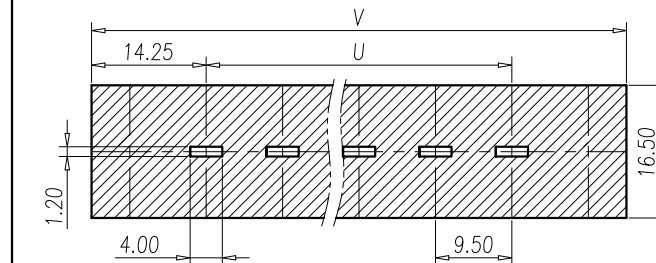
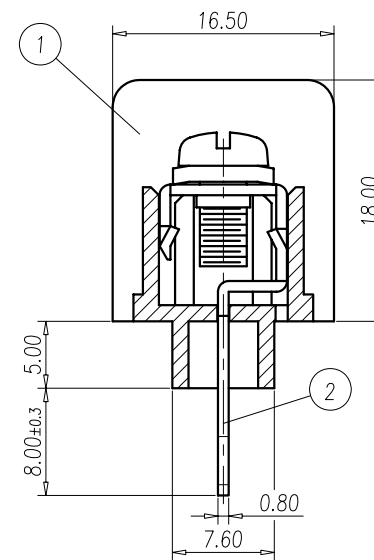


P	2	3	4	5	6	7	8	9	10	11	12	13	14
U	9.50	19.0	28.5	38.0	47.5	57.0	66.5	76.0	85.5	95.0	104.5	114.0	123.5
V	38.0	47.5	57.0	66.5	76.0	85.5	95.0	104.5	114.0	123.5	133.0	142.5	152.0
P	15	16	17	18	19	20	21	22	23	24	25	26	
U	113.0	142.5	152.0	161.5	171.0	180.5	190.0	199.5	209.0	218.5	228.0	237.5	
V	161.5	171.0	180.5	190.0	199.5	209.0	218.5	228.0	237.5	247.0	256.5	266.0	



P.C.B LAYOUT



NOTES:

- Rating: 300V 25A  
PITCH: 9.50mm
- Insulation Withstands Voltage:  
AC 2000V/MIN
- Insulation Resistance:  
500MΩ or more at DC500V
- Using Temperature Range:  
-40°C~+105°C
- Screw Torque Value: 13kgf-cm
- Suitable Electric Wire: AWG 22 12
- RoHS Compliance

Normal Geometric Tolerancing			
—	//	≡	⊥
0 to 100	0.2	0.3	0 to 10
over 100 to 150	0.3		over 10
over 150	0.5		0.3
Total Pitch Tolerances		Normal dimension Tolerances	
0<U<=30	±0.20	0~30	±0.25
30<U<=53	±0.25	over 30~53	±0.30
53<U<=70	±0.30	over 53~70	±0.35
70<U<=90	±0.35	over 70~90	±0.44
90<U<=115	±0.44	over 90~115	±0.55
115<U<=150	±0.55	over 115~150	±0.70
150<U<=200	±0.70	over 150~200	±0.85
200<U<=250	±0.85	over 200~250	±1.00
250<U<=320	±1.00	over 250~320	±1.20

3	SCREW	STEEL	M3.5/Ni Plated
2	SOLDER POST	COPPER ALLOY	Tin Plated
1	HOUSING	PA66	UL94-V0 BLACK
ITEM	NAME OF PART	MATERIAL	NOTES

RoHS Compliant

TOLERANCES ARE

**MORETHANALL**  
PCB CONNECTORS  
Cable ASSEMBLIES

煜倫股份有限公司

www.morethanall.com

DRAWING BY CY

CHECKED BY GENIUS

UNIT / mm

SCALE 1 : 1

DATE

SIZE A4

PPOJECTION

X, ±  
.X ±  
.XX ±  
.XXX ±  
ANG ±

照片框

ORDER INFORMATION

TBB095-S3S5E-xx-LF

SERIES

LEADFREE

02~26WAY

EAR

OFFSET 5.0mm

TAB3.6mm

DESCRIPTION: