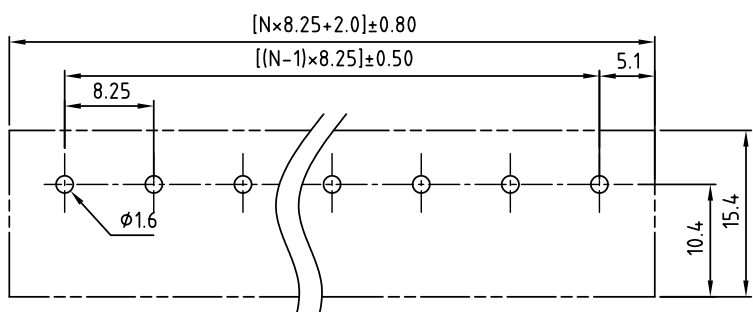
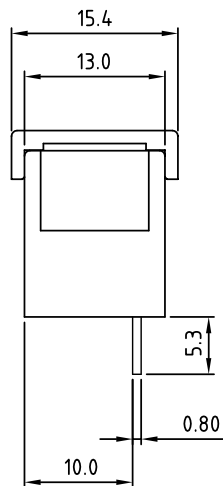


N=Number of contacts



PCB LAYOUT



- MATERIALS ELECTRICAL
- |                             |                                |
|-----------------------------|--------------------------------|
| RATED VOLTAGE & CURRENT:    | 300 V, 20 A                    |
| WITHSTAND VOLTAGE:          | AC 2000 V/Min                  |
| INSULATION RESISTANCE:      | 1000 MΩ OR MORE AT DC 500 V    |
| OPERATING TEMPERATURE RANG: | -40 °C ~ +115 °C               |
| SCREW TORQUE VALUE:         | 7 Lb-In.                       |
| LOCK AND WITHDRAW FORCE:    | 3.5kg                          |
| WIRE RANGE:                 | 22 - 12 AWG                    |
| 1) MOLDED PARTS:            | THERMOPLASTIC, UL 94 V-0 BLACK |
| 2) TERMINAL:                | BRASS, 0.8t, Tin PLATED        |
| 3) TERMINAL SCREWS:         | STEEL, Ni PLATED, M3           |
| 4) COVER MATERIAL:          | PC                             |

TBB082-DSC-xx-LF  
LEADFREE

RoHS Compliant

**MORETHANALL**  
CONNECTORS  
ASSEMBLIES

煜倫股份有限公司

PART NO. TBB082-DSC-xx

DWG NO. TBB082-DSC-xx

FILE NO.

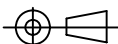
UNIT / mm

SCALE 1:1

CHECKED BY CY

DRAWING BY

PROJECTION



TOLERANCES ARE

.X ± 0.2  
.XX ±  
.XXX ±  
AWG

DESCRIPTION:

AREA

REVISIONS

HK

DATE