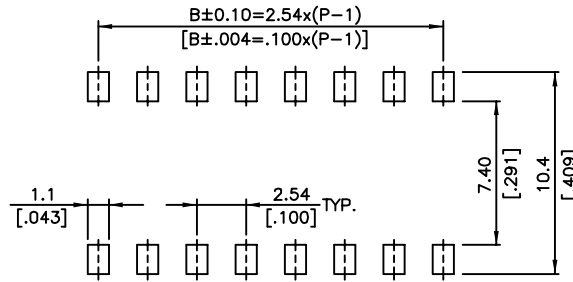
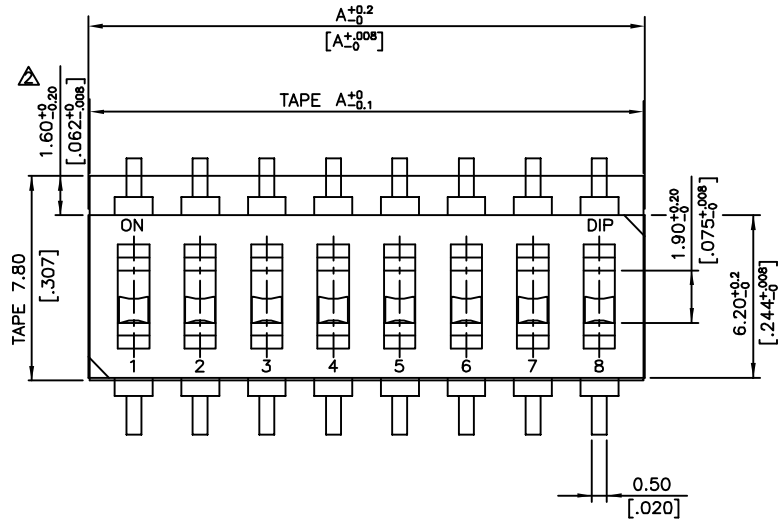
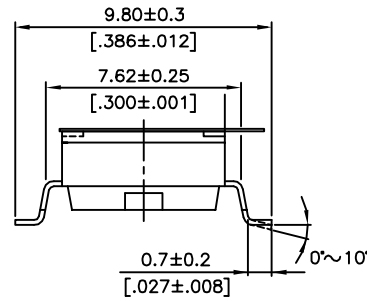
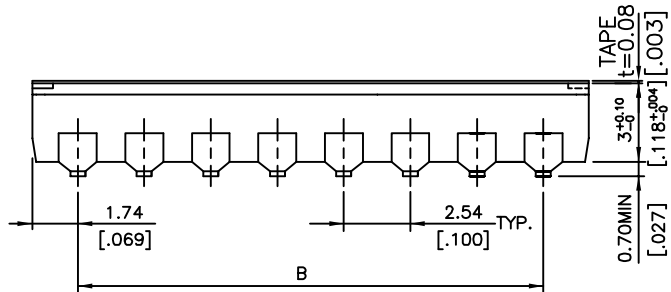


- NOTE:**
1. ALL DIMENSIONS ARE IN MILLIMETERS, BRACKETED DIMENSIONS ARE IN INCHES.
  2. GENERAL TOLERANCES: 10mm OVER -  $\pm 0.20$ mm.  
10mm BELOW -  $\pm 0.10$ mm.
  3. DMR-02 / DMR-03 ARE WITHOUT "DIP" PRINTING.



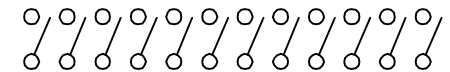
**P.C.B. LAYOUT**



**DMR SERIES**

SW-SVXC-12	12	31.42[1.237]	27.94[1.100]
SW-SVXC-10	10	26.34[1.037]	22.86[.900]
SW-SVXC-09	9	23.80[.937]	20.32[.800]
SW-SVXC-08	8	21.26[.837]	17.78[.700]
SW-SVXC-07	7	18.72[.737]	15.24[.600]
SW-SVXC-06	6	16.18[.637]	12.70[.500]
SW-SVXC-05	5	13.64[.537]	10.16[.400]
SW-SVXC-04	4	11.10[.437]	7.62[.300]
SW-SVXC-03	3	8.56[.337]	5.08[.200]
SW-SVXC-02	2	6.02[.237]	2.54[.100]
-	-	-	-
PROD. NO.	NO. OF POS.	DIM. A	DIM. B

**SCHEMATIC(TYP.)**



(1,2,3,4,5,6,7,8,9,10,12, POS AVAIL)

**RoHS Compliant**

**MORETHANALL**  
PCB CONNECTORS  
Cable ASSEMBLIES

煜倫股份有限公司

www.morethanall.com

DRAWING BY CY

CHECKED BY GENIUS

UNIT/mm SCALE 1:1

DATE

SIZE A4

TOLERANCES ARE

X,  $\pm$   
X,  $\pm$   
.XX  $\pm$   
.XXX  $\pm$   
ANG  $\pm$

PJECTION

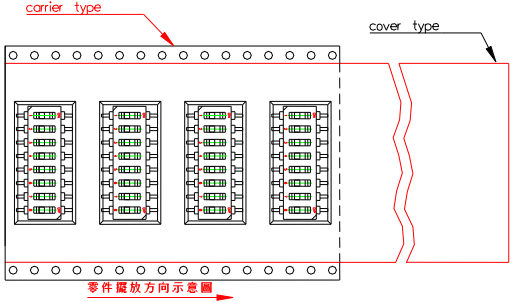
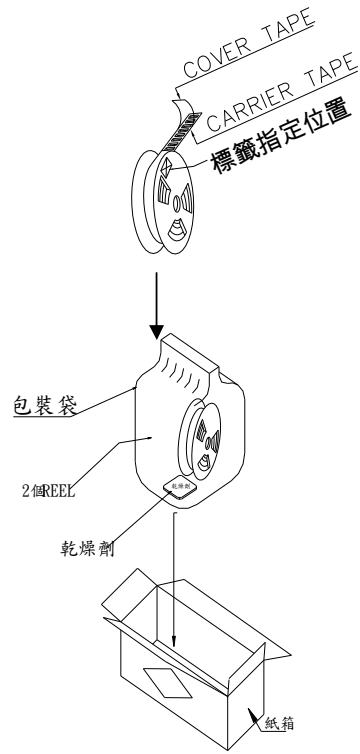
照片框

**ORDER INFORMATION**

SW-SVXCR-xx-LF  
SERIES | | | | | LEADFREE  
02~12WAY  
REEL  
TAPE  
SLIDE | RECESSED/ACTUATOR  
180°SMT

DESCRIPTION: S.M.T TYPE DIP SWITCH

# 成品包裝說明

適用 產品	SW-SVXCR-xx	包裝 類別	TAPE & REEL
作 業 說 明	<div style="display: flex; justify-content: space-around; align-items: center;">   </div> <ol style="list-style-type: none"> <li>1. CARRIER TAPE 須預留 160 mm長(約 10 個 Pitch 槽孔), 才可擺入成品, COVER TAPE 亦同。</li> <li>2. 擺完成品後, 尾端亦須最少預留:             <ol style="list-style-type: none"> <li>2.1. CARRIER TYPE~240 mm(約 15 個 Pitch 槽孔)。</li> <li>2.2. COVER TAPE~配合 CARRIER TAPE 長度覆蓋後, 需再超出 160 mm 以上。</li> </ol> </li> <li>3. COVER TAPE 與 CARRIER 覆蓋附著強度需在 10~130g。(撕開速率 1 分鐘在 300±10mm、撕開方向與膠捲相反, 角度介於 165~180 度)</li> <li>4. 如圖所示, 將成品置入 CARRIER TAPE(承載塑膠料帶)內, 以 COVER TAPE(覆蓋用膠帶)貼附於上, 並配合帶裝機自動捲繞於塑膠 REEL 收料, 定量包裝後再放入包裝外箱。</li> <li>5. COVER TAPE 不可有浮起及未貼附於 CARRIER TAPE 或成品放置浮起之現象發生。</li> <li>6. 零箱部份, 出貨時需以緩衝物填滿。</li> <li>7. REEL 包裝時, 需用包裝袋封裝[2 盤裝 1 袋]; 袋裡需加 1 包乾燥劑~</li> <li>8. 每盤 Reel 中的標籤, 需依示意圖中方式張貼才可。</li> </ol>		

RoHS Compliant

TOLERANCES ARE

**MORETHANALL**  
PCB CONNECTORS  
Cable ASSEMBLIES

煜倫股份有限公司

www.morethanall.com

DRAWING BY CY

CHECKED BY GENIUS

UNIT / mm

SCALE 1 : 1

DATE

SIZE A4

X, ±  
.X ±  
.XX ±  
.XXX ±  
ANG ±

PJECTION 

照片框

ORDER INFORMATION

SW-SVXCR-xx-LF  
SERIES | REEL | LEADFREE  
02~12WAY  
SLIDE | TAPE | RECESSED/ACTUATOR  
180°SMT

DESCRIPTION:

產 品 型 號		包 裝 容 量			
		Pcs. /REEL	REEL/箱	Pcs. /箱	
01	SW-SVXCR-02	900	20	18000	
02					
03	SW-SVXCR-03				
04					
05	SW-SVXCR-04				
06					
07	SW-SVXCR-05				
08					
09	SW-SVXCR-06				
10					
11	SW-SVXCR-08			9	8100
12					

RoHS Compliant

TOLERANCES ARE

**MORETHANALL**  
PCB CONNECTORS  
Cable ASSEMBLIES

煜倫股份有限公司

www.morethanall.com

DRAWING BY CY

CHECKED BY GENIUS

UNIT / mm

SCALE 1:1

DATE

SIZE A4

X. ±  
.X ±  
.XX ±  
.XXX ±  
ANG ±

PPOJECTION 

照片框

ORDER INFORMATION

SW-SVXCR-xx-LF  
SERIES | | | | | LEADFREE  
02~12WAY  
REEL  
SLIDE | TAPE  
RECESSED/ACTUATOR  
180°SMT

DESCRIPTION: