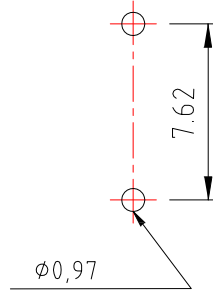
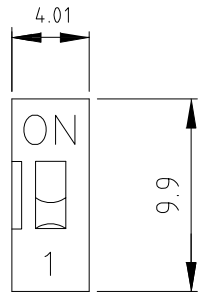


ON POSMON



P.C.B LAYOUT MOUNTING PATTERN

NOTE: MATERIAL: Δ BASE:UL94V-0 PBT Thermoplastic(Black)
 Δ COVER:UL94V-0 PBT Thermoplastic(Red.Blue)
 Δ ACTUATORS:UL94V-0 PBT Thermoplastic(White)
 Δ CONTACT PLATING:Gold plating over nickel
 Δ PITTING MATERIAL:Epoxy

Δ ELECTRICAL

Electrical: 2000 operations per switch-
 24 VDC,25mA.

Non-Switching Rating:100mA,50VDC.

Switching Rating: 25mA,24VDC.

Contact Resistance:50mΩ max. at initial.

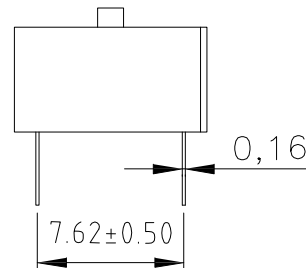
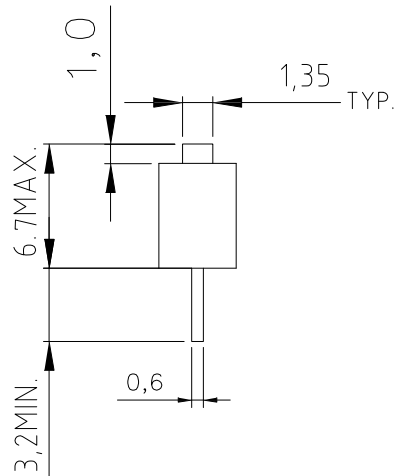
Δ MECHANICAL

Mechanical life: 2000 operations per swith.

Stroke: 2.0mm.

Operation Temp: -20°C to 70°C

Storage Temp: -40°C to 85°C.



RoHS Compliant

TOLERANCES ARE

MORETHANALL
 PCB CONNECTORS
 Cable ASSEMBLIES

煜倫股份有限公司

www.morethanall.com

DRAWING BY CY

CHECKED BY GENIUS

UNIT / mm

SCALE 1 : 1

DATE

SIZE A4

PPOJECTION

Up to 5 ±0.2
 Above 5 ~ 15 ±0.3
 Above 15 ~ 30 ±0.4
 Above 30 ~ 50 ±0.5
 Angle ±0.3°

照片框

ORDER INFORMATION

SW-SRD-01-LF
 SERIES | LEADFREE
 | | 01 WAY
 RED
 SLIDE TYPE

DESCRIPTION: SWITCH