

鍍錫編號[Part No. (Tin-plated before press/forming)]

表面處理(Surface treatment):  
預鍍錫膜厚 $40\ \mu$ "以上  
(Pre-tin-plated thickness more than  $40\ \mu$ " )

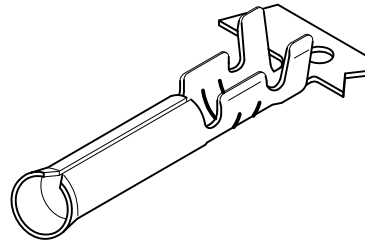
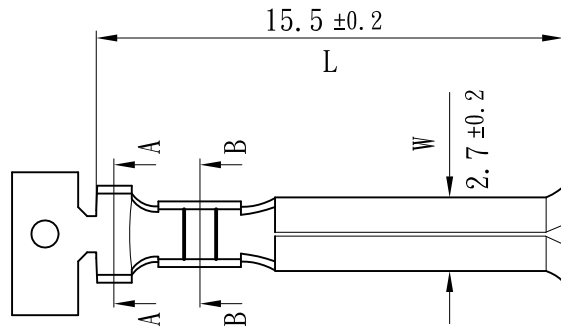
適用電線(Applicable wire):  
AWG# 18~22

線皮外徑(Insulation O.D):  
2.1~1.7 mm

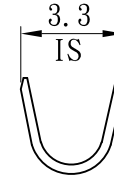
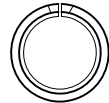
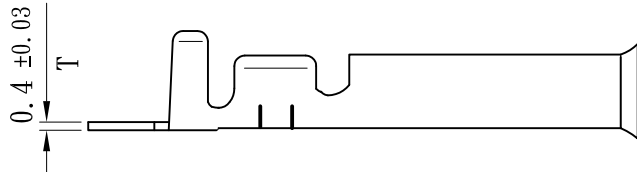
對手件(Mating part):  
 $\phi 1.9$ mm ROUND

包裝數量(Standard packing):  
10000 PCS

此產品須符合RoHS指令要求  
(The product must conform to the RoHS directive)



B-B Section



A-A Section

RoHS Compliant

TOLERANCES ARE

**MORETHANALL**  
PCB CONNECTORS  
Cable ASSEMBLIES

煜倫股份有限公司

www.morethanall.com

DRAWING BY CY

CHECKED BY GENIUS

UNIT / mm

SCALE 1 : 1

DATE

SIZE A4

X. ±

.X ±

.XX ±

.XXX ±

ANG ±

PPOJECTION

照片框

ORDER INFORMATION

ST-19T-18-LF  
SERIES | LEADFREE  
18-22 AWG  
TIN  
1.9Ø

DESCRIPTION: