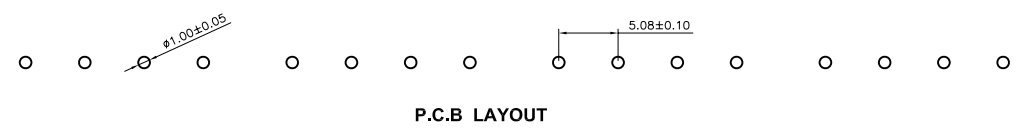
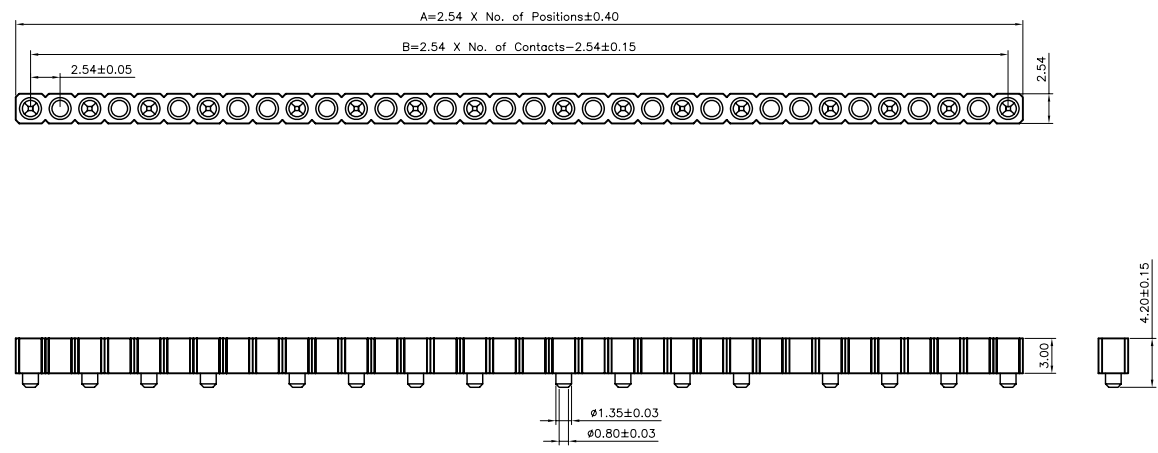


Technical Data

Material:
 Pin(outer sleeve): Brass,machined CuZn38Pb2
 Clip(contact 4 finger): Beryllium copper,heat treated
Plating(outer sleeve):
 Tin plated:2μm/80μ"Ni, 5μm/200μ"Sn
 Gold Plated:2μm/80μ"nickelfull gold
Plating(contact): 2μm/80μ"nickel, gold or Tin plated
 Insulator black(housing): PPS (UL94V-0)

Electrical:
 Current rating: 3Amps/contact max.
 Contact resistance: ≤4mΩ/contact
 Insulation resistance: ≥1000MΩ at V=100V
 Operating voltage: 60VAC/DC

Mechanical:
 Average insertion force with steel pin of
 □0.43mm/0.17": <250g
 Average withdrawal force with steel pin of
 □0.43mm/0.17": >50g min.
 Mechanical life cycle:min.200
 Operating temperatures: Gold Plated:-55° C to+105° C
 Tin plated:-40° C to+105° C
 Soldering temperature: +260° C,10s max



SSP-VX-1X34EE9-LF
LEADFREE

RoHS Compliant



PART NO. SSP-VX-1X34EE9		CHECKED BY CY		TOLERANCES ARE .X ± 0.2 .XX ± 0.1 .XXX ± .1 AWG	DESCRIP TION: 2.54mmPitch Sip Sockets Single Row SMT Pin Length 4.20mm
DWG NO. SSP-VX-1X34EE9		DRAWING BY			
FILE NO.		PROJECTION		AREA	REVISIONS
UNIT / mm	SCALE 1:1			HK	DATE

煜倫股份有限公司