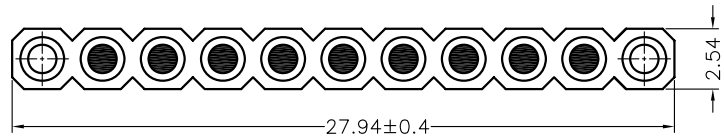
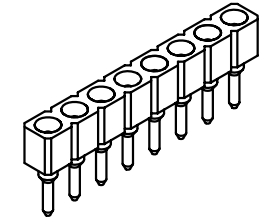
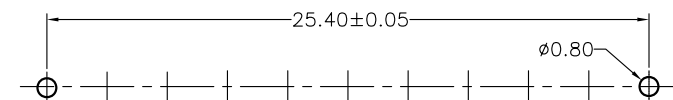
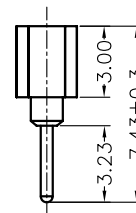
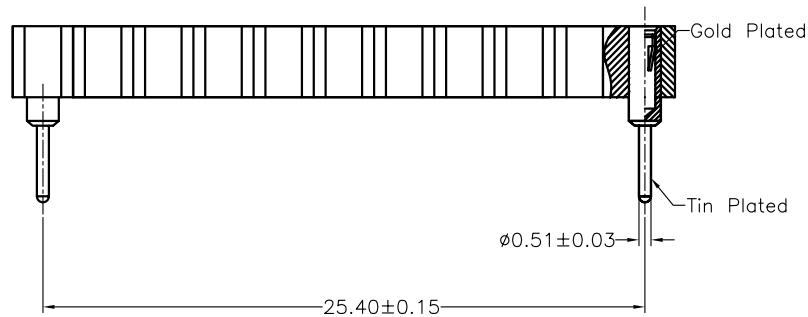


Empty 2,3,4,5,6,7,8,9,10 Pin



Specifications:

- Current rating:3.0A AC/DC
- Voltage rating:100V AC/DC
- Contact resistance:10m ohm. max.
- Insulator resistance:5000M ohm. Min.
- Withstanding voltage:1000V AC for one minute
- Operating temperature range:-40°C to +105°C
- Material and Finish:
- Insulator:High Temp. Plastic(PPS UL94V-0)
- Standard Color:Black
- Contact:Beryllium Copper(Becu) Gold Plated
- Sleeve Barrel:Brass Tin Plated



PCB Layout

RoHS Compliant

TOLERANCES ARE



DRAWING BY CY

CHECKED BY GENIUS

UNIT / mm

SCALE 1 : 1

DATE

SIZE A4

- X, ±
- .X ±
- .XX ±
- .XXX ±
- ANG ±

PJECTION

照片框

ORDER INFORMATION

SS-D-1X11EAM-LF
 SERIES | LEADFREE
 | 11 WAY
 | EMPTY ALL MIDDLE
 DIP 180°

DESCRIPTION: 2.54mm Machine Pin Socket Single Row

煜倫股份有限公司

www.morethanall.com