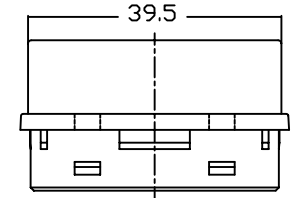
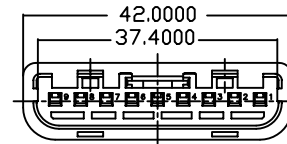
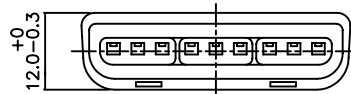
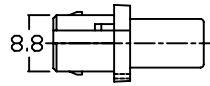
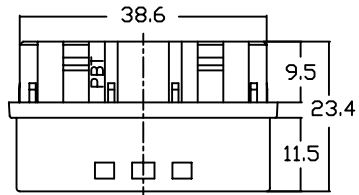
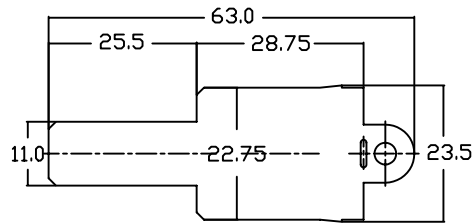


SONY 外套(無字)橢圓  
 材質/MATERIAL: ABS 94HB (灰/GREY)

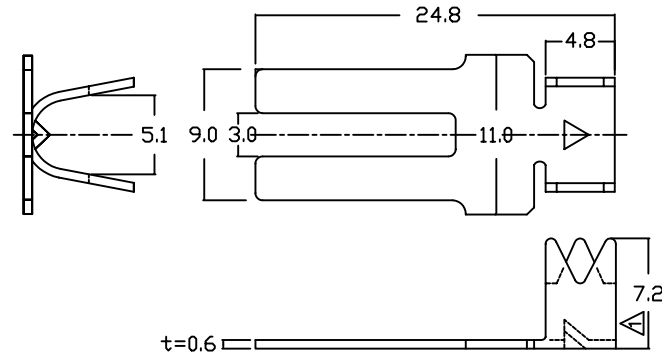


SONY 膠芯 PBT  
 材質/MATERIAL: PBT 94HB



SONY 接觸片(鍍)

1. 材質/MATERIAL: 鋼/Steel
2. 電鍍/PLATING: 鍍/Nickel



SONY 夾線端子(洗)  
 材質/MATERIAL: 鋅板 / ZINC SHEET

**MORE THAN ALL**  
 CONNECTORS  
 ASSEMBLIES

焯倫有限公司

PART NO. SN-P4-09

DWG NO. SN-P4-09

FILE NO.

UNIT / mm

SCALE 1:1

APPROVED BY CY

DRAWING BY

PROJECTION

TOLERANCES ARE

.X ± 0.1  
 .XX ± 0.05  
 .XXX  
 AWG

DESCRIPTION: SONY 配件系列: 外套, 膠芯, 夾線端子, 接觸片

AREA

REVISIONS

HK

DATE