

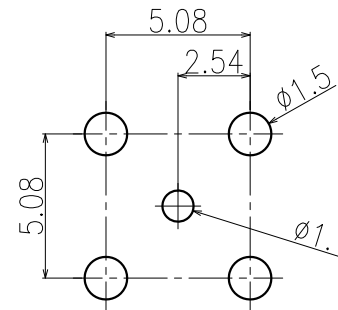
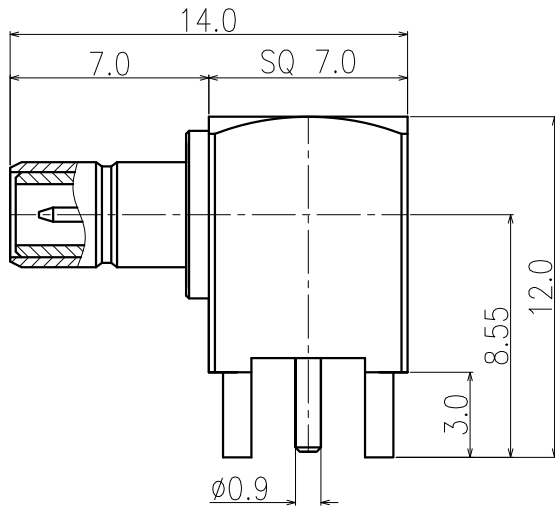
NOTES: TYPICAL SPECIFICATIONS

1.0. ELECTRICAL DATA

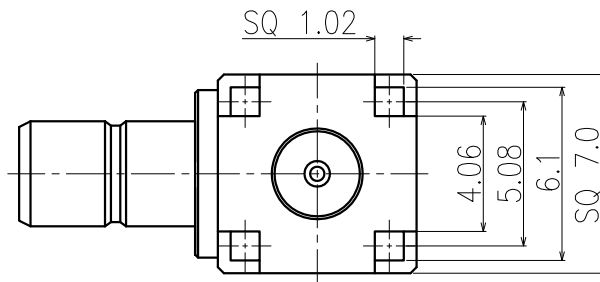
- 1.1. FREQUENCY RANGE ---- DC ... 4 GHz
- 1.2. IMPEDANC ---- 50 Ohms
- 1.3. VSWR ---- < 1.50
- 1.4. DIELECTRIC WITHSTANDING VOLTAGE ---- 1000 Vrms
- 1.5. WORKING VOLTAGE ---- 335 Vrms max.
- 1.6. INSULATION RESISTANCE ---- 1000 Mega-Ohms
- 1.7. CENTER CONTACT RESISTANCE ---- 6.0 mini-Ohms
- 1.8. OUTER CONTACT RESISTANCE ---- 1.0 mini-Ohms

2.0. MECHANICAL DATA

- 2.1. COUPLING METHOD ---- SNAP-ON
- 2.2. DURABILITY (MATING/UNMATING) ---- 500 Cycles
- 2.3. ENGAGEMENT FORCE ---- 14 lbs max.
- 2.4. DISENGAGEMENT FORCE ---- 14 lbs max.
- 2.5. CONTACT RETENTION ---- 4 lbs
- 2.6. METAL BINDING FORCE ---- PUSHDOWN FORCE ---- < 2.5 Kg(from 10cm)
SIDE PUSH FORCE ---- < 6 Kg(from 3cm)
TORQUE ---- < 6Kg



RECOMMENDED MOUNTING HOLES



BOM

ITEM	ITEM NAME	MATERIAL	FINISH	Q'TY/EA
3	INSULATOR	TEFLON	WHITE	2
2	CONDUCTOR	BRASS	GOLD	1
1	BODY	BRASS	GOLD	2

RoHS Compliant

TOLERANCES ARE

MORETHANALL
PCB CONNECTORS
Cable ASSEMBLIES

煜倫股份有限公司

www.morethanall.com

DRAWING BY CY

CHECKED BY GENIUS

UNIT / mm SCALE 1 : 1

DATE

SIZE A4

X. ± 0.38
.X ± 0.25
.XX ± 0.15
.XXX ± 0.05
ANG ±

PPOJECTION

照片框

ORDER INFORMATION

SMB-JRCH55-50-LF
SERIES | LEADFREE
50 OHM
CENTER HIGH 5.5mm
DIP 90°
JACK

DESCRIPTION: SMB JACK R/A FOR PCB 50Ω (Height : 5.55mm)