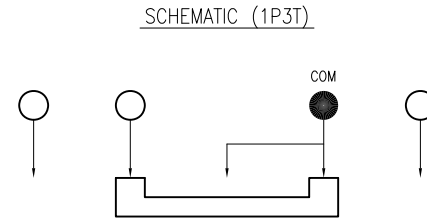
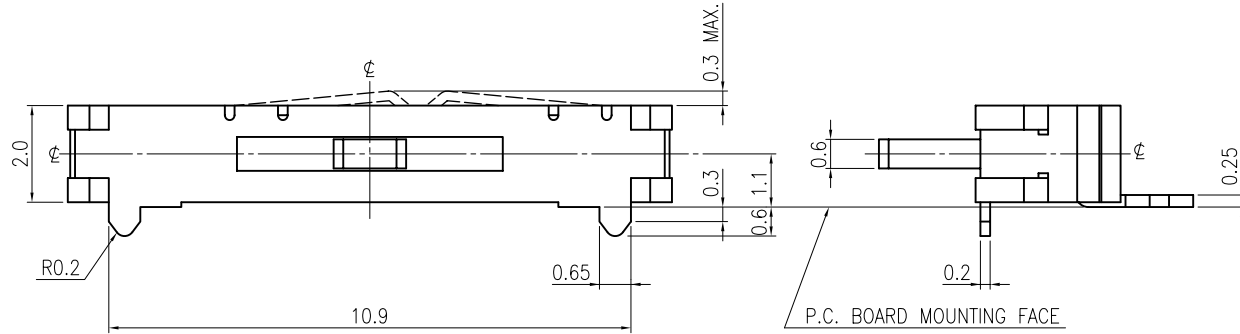
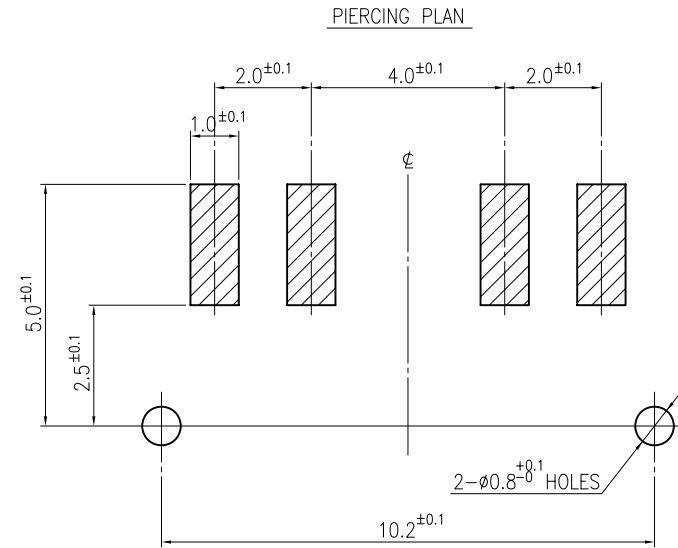


SPECIFICATIONS			
RATING	DC4V 0.3A	TIMING	NON-SHORT
CONTACT RESISTANCE	70mΩ MAX.	OPERATION (TORQUE)	
INSULATION RESISTANCE	DC500V-100MΩ MIN.	STROKE (ANGLE)	2.0±0.3 mm
WITHSTAND VOLTAGE	AC500V-1 MINUTE	CONTACT RESISTANCE	100mΩ MAX.
REMARKS :		(AFTER 10,000 CYCLES LIFE TEST)	



OPERATION

A→B C→B 175 ±100gf
 B→A B→C 250 ±100gf

NOTE:
 1. THE SLIDER'S POSITION WILL BE AS DRAWING SHOWN.

RoHS Compliant

TOLERANCES ARE

MORETHANALL
 PCB CONNECTORS
 Cable ASSEMBLIES
 煜倫股份有限公司
 www.morethanall.com

DRAWING BY CY
 CHECKED BY GENIUS
 UNIT / mm SCALE 1 : 1
 DATE
 SIZE A4 PROJECTION

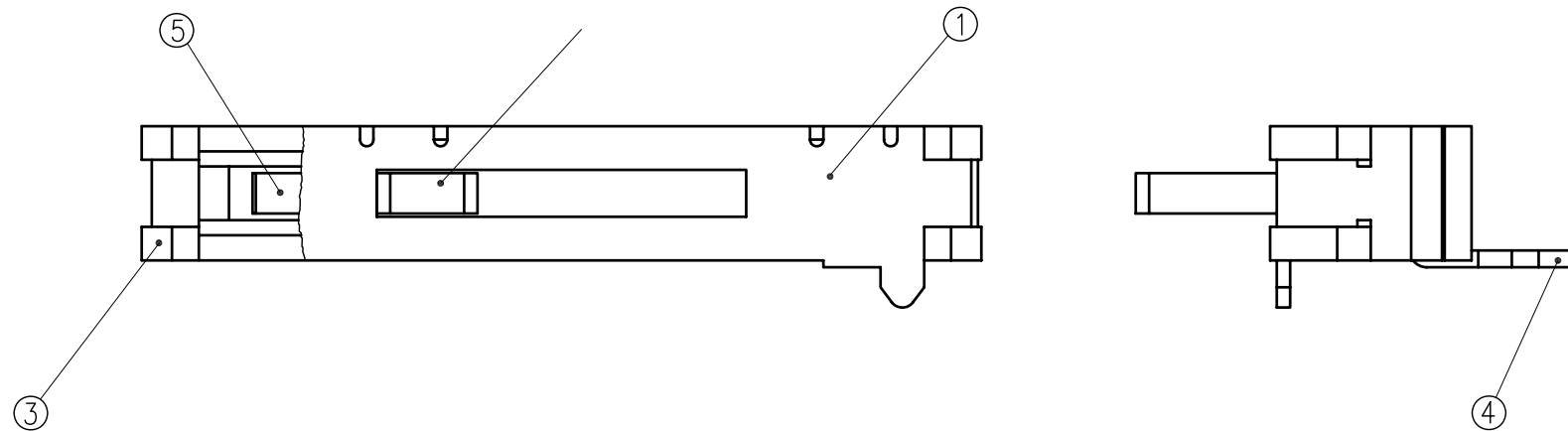
X. ±
 .X ± 0.20
 .XX ± 0.10
 .XXX ±
 ANG ±



ORDER INFORMATION

SLSW20-WP102R-1X04-LF
 SERIES REEL LEADFREE
 04 WAY
 POST 10.2mm
 90°SMT

DESCRIPTION: SLIDE SWITCH



5	CONTACT WIPER	1	PHOSPHOR BRONZE	PBSR Ag-CLAD
4	TERMINAL	4	BRASS	BSR2 Ag-PLATING or Ag-CLAD
3	FRAME	1	LIQUID CRYSTAL POLYMER	LCP+G
2	SLIDER	1	POLYAMIDE + GLASS FIBER	PA+G
1	COVER	1	STAINLESS STEEL	SUS
NO.	PART NAME	Q'TY	MATERIAL	SPECIFICATION

RoHS Compliant

TOLERANCES ARE

MORETHANALL
PCB CONNECTORS
Cable ASSEMBLIES

DRAWING BY CY

X. ±

.X ± 0.20

CHECKED BY GENIUS

.XX ± 0.10

UNIT / mm

SCALE 1:1

.XXX ±

ANG ±

DATE

SIZE A4

PPOJECTION

照片框

ORDER INFORMATION

SLSW20-WP102R-1X04-LF

SERIES

LEADFREE

04 WAY

REEL

POST 10.2mm

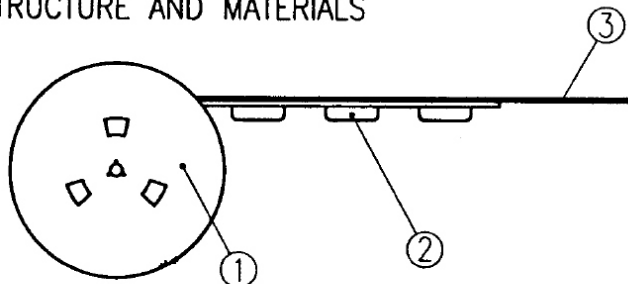
90°SMT

煜倫股份有限公司

www.morethanall.com

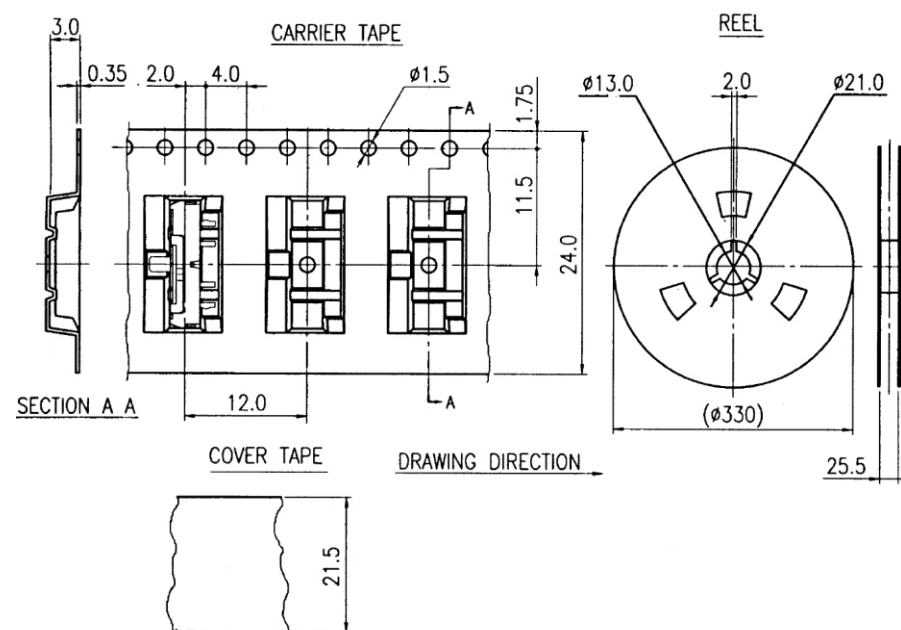
DESCRIPTION: SLIDE SWITCH

1. STRUCTURE AND MATERIALS



③	COVER TAPE	POLYESTER
②	CARRIER TAPE	POLYSTYRENE
①	REEL	POLYSTYRENE
NO.	PARTS NAME	MATERIALS

2. PACKAGING QUANTITY : 1,800 PCS/REEL
3. MORE THAN 10 EMPTY POCKETS SHOULD BE REMAINED AT BOTH ENDS OF THE CARRIER TAPE FOR EACH REEL.
4. SHORTAGE LESS THAN 10 PCS A REEL IS ACCECTABLE BUT MORE THAN 3 RUNNING POCKETS SHORTAGE IS NOT ALLOWED.
5. STRIPPING STRENGTH OF COVER TAPE IS BETWEEN 10 gf TO 70 gf AND STRIPPING ANGLE SHOULD BE WITHIN 165° ~ 180 °
6. THE PRODUCT IN THE POCKET OF CARRIER TAPE SHOULD BE PLACED IN A SPECIFIED CORRECT POSITION.
7. DIMENSIONS :



RoHS Compliant

TOLERANCES ARE

MORETHANALL
PCB CONNECTORS
Cable ASSEMBLIES

DRAWING BY CY

X, ±
.X ± 0.20

CHECKED BY GENIUS

.XX ± 0.10

UNIT / mm

SCALE 1 : 1

.XXX ±

ANG ±

DATE

SIZE A4

P PROJECTION

照片框

ORDER INFORMATION

SLSW20-WP102R-1X04-LF

SERIES

LEADFREE

REEL

04 WAY

POST 10.2mm

90°SMT

煜倫股份有限公司

www.morethanall.com

DESCRIPTION: SLIDE SWITCH