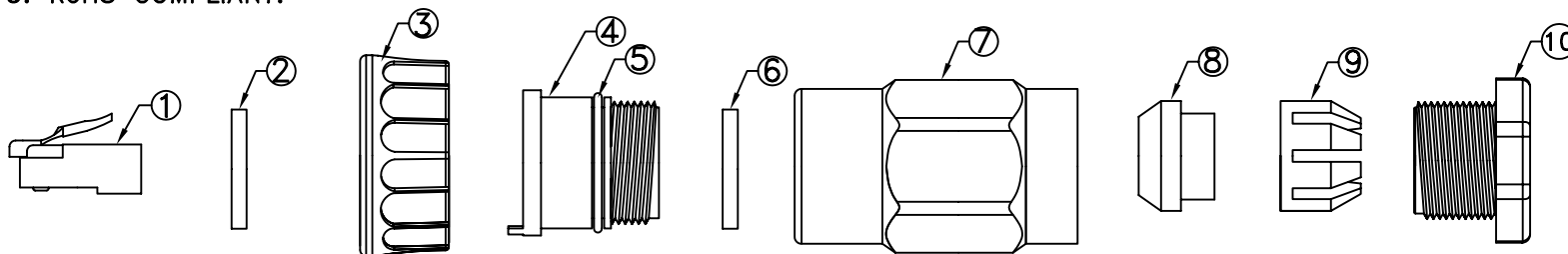


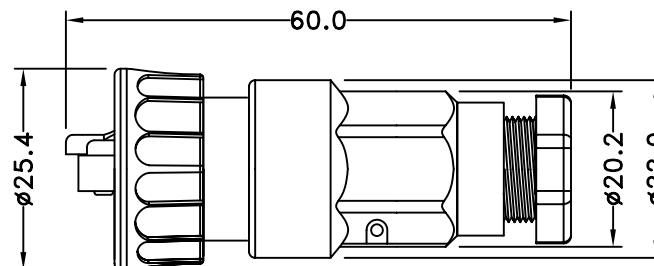
TITLE: RJ45 PLASTIC C3 SHIELDED FIELD INSTALLABLE CABLE END PLUG SCREW

NOTES: (UNLESS OTHERWISE SPECIFIED)

1. WATERPROOF RATE: IP67.
2. CABLE DIAMETER: 4 TO 6mm.
3. RECOMMEND COVER TORQUE: 6~7Kgf-CM.
4. RECOMMEND GLAND NUT TORQUE: 9~10Kgf-CM.
5. RoHS COMPLIANT.



ITEM	NAME	DESCRIPTION	Q'TY
1	RJ45 PLUG	HOUSING: THERMOPLASTIC COLOR CLEAN CONTACTS: COPPER ALLOY GOLD PLATED SHELL: STEEL NICKEL PLATED	1
2	RUBBER PAD	SILICONE COLOR: BLACK	1
3	SCREW NUT	THERMOPLASTIC COLOR: BLACK	1
4	HOUSING	THERMOPLASTIC COLOR: BLACK	1
5	O-RING	SILICONE COLOR: RED	1
6	GASKET	SILICONE COLOR: BLACK	1
7	COVER	THERMOPLASTIC COLOR: BLACK	1
8	GLAND	SILICONE COLOR: GREEN	1
9	CAGE	THERMOPLASTIC COLOR: WHITE	1
10	GLAND NUT	THERMOPLASTIC COLOR: BLACK	1



RoHS Compliant

TOLERANCES ARE

MORETHANALL
PCB CONNECTORS
Cable ASSEMBLIES

DRAWING BY CY

CHECKED BY GENIUS

UNIT / mm SCALE 1 : 1

DATE

SIZE A4

X. ±
.X ± 0.50
.XX ± 0.20
.XXX ± 0.05
ANG ±

PPOJECTION

照片框

ORDER INFORMATION

SLKRJ-PA-0808-LF

SERIES | LEADFREE
| 8P8C
| ASSEMBLY
| MALE

DESCRIPTION:

煜倫股份有限公司

www.morethanall.com