

Technical Data

Material:

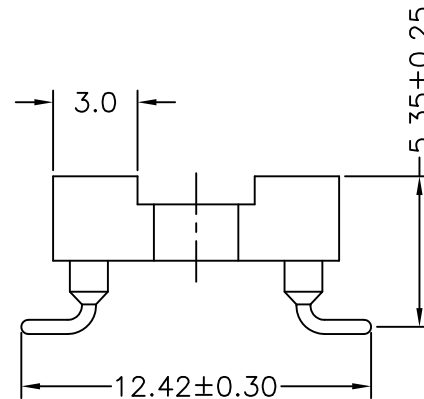
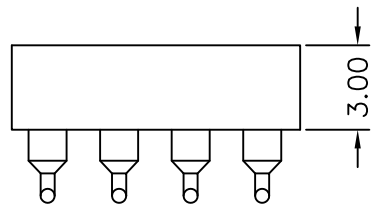
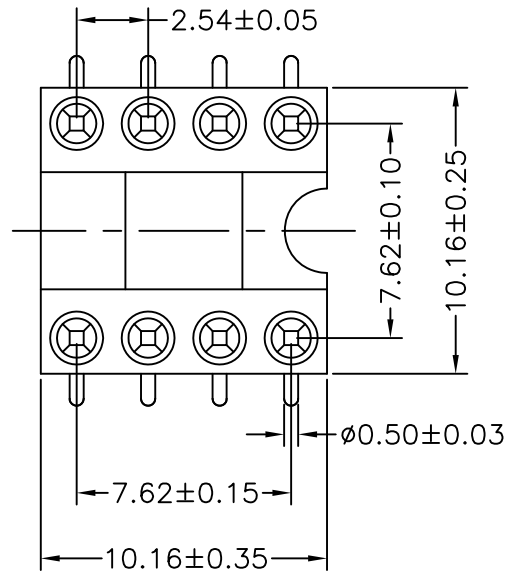
Pin(outer sleeve): Brass,machined CuZn38Pb2
 Clip(contact 4 finger): Beryllium Copper,heat treated
 Plating(outer sleeve):
 Tin plated:2μm/80μ"Ni, 5μm/200μ"Sn
 Gold Plated:2μm/80μ"Ni,Full gold
 Plating(contact): 2μm/80μ"Ni, gold or Tin plated
 Insulator(black): Glass filled thermoplastic polyester
 UL94V-0

Electrical:

Current rating: 3Amps/contact max.
 Contact resistance: ≤4mΩ/contact
 Insulation resistance: ≥1000MΩ at V=100V
 Operating voltage: 60VAC/DC

Mechanical:

Average insertion force with steel pin of
 ∅0.43mm/0.17": <250g
 Average withdrawal force with steel pin of
 ∅0.43mm/0.17": >50g min.
 Mechanical life cycle:min.200
 Operating temperatures: Gold Plsted:-55°C to+105°C
 Tin plated:-40°C to+105°C
 Soldering temperature: +260°C,10s max.



MORETHANALL
 PCB CONNECTORS
 Cable ASSEMBLIES

煜倫股份有限公司

www.morethanall.com

RoHS Compliant

DRAWING BY CY

CHECKED BY GENIUS

UNIT / mm SCALE 1 : 1

DATE

SIZE A4

TOLERANCES ARE

X. ±
 .X ±
 .XX ±
 .XXX ±
 ANG ±

PJECTION

照片框

ORDER INFORMATION

SIC-V03-08-LF
 SERIES | LEADFREE
 | 08WAY
 | 7.62mm
 | 180°SMT

DESCRIPTION: 2.54mmPitch SIP Sockets SMT 8Pins DIP Spacing 7.62mm Pin length 7.43