

Technical Data:

Material:

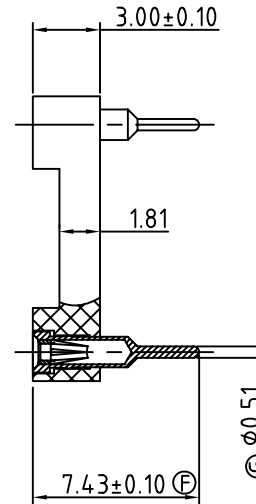
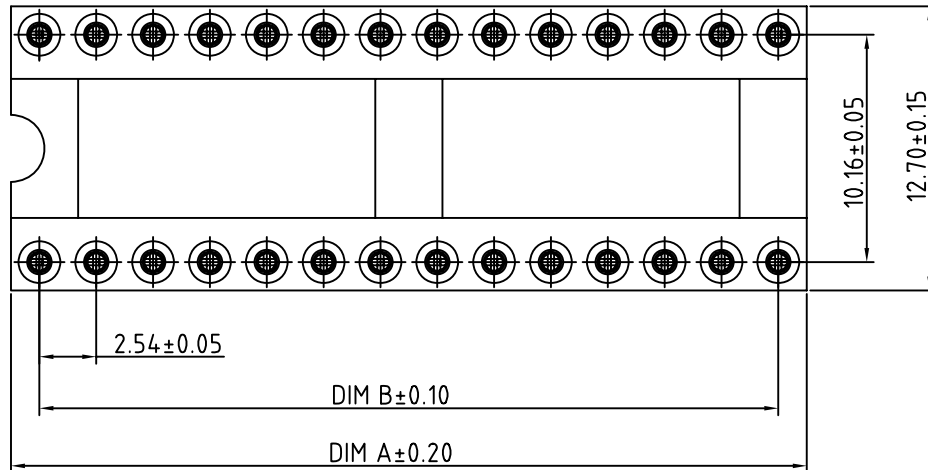
- Pin (outer sieve) : Brass,machined, CuZn38Pb2
- Clip(contact 4 finger):Beryllium copper,heat treated
- Plating(outer sleeve) : Gold plated:2μm/80μ"nickel, gold flash
- Plating(contact):2μm/80μ"nickel,gold flash
- Insulator body(housing) : PBT(UL94V-0)

Electrical

- Current rating : 3 Amps/contact max.
- Contact resistance : <4mΩ/contact
- Insulation resistance: >1000MΩ at V=100V
- Operating : 60 vac/DC

Mechanical

- Operating temperature: Gold plated:-55°C to +125°C (continuous) Tin plated:-40°C to +105°C
- Average insertion force : <350gf with steel pin of φ0.43mm/0.017"
- Average withdrawal :>50gf force with steel pin of φ0.43mm/0.017"
- Mechanical life : min.200
- Soldering temperture : +210°C,10s max.



Contact	DIM A	DIM B
20	25.40	22.86
22	27.94	25.40
24	30.48	27.94
28	35.56	33.02
32	40.64	38.10

RoHS Compliant

TOLERANCES ARE

MORETHANALL
PCB CONNECTORS
Cable ASSEMBLIES

煜倫股份有限公司

www.morethanall.com

DRAWING BY CY

CHECKED BY GENIUS

UNIT / mm

SCALE 1 : 1

DATE

SIZE A4

X, ±

.X ±

.XX ±

.XXX ±

ANG ±

PPOJECTION

照片框

ORDER INFORMATION

SIC-D04-xx-LF
SERIES | T | LEADFREE
20~32WAY
DIP | SPACING 10.16mm

DESCRIPTION: