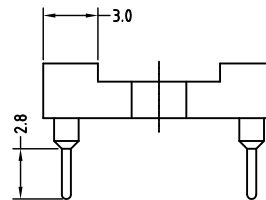
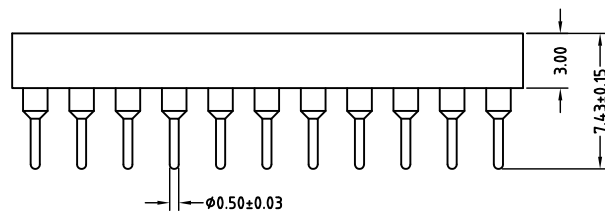
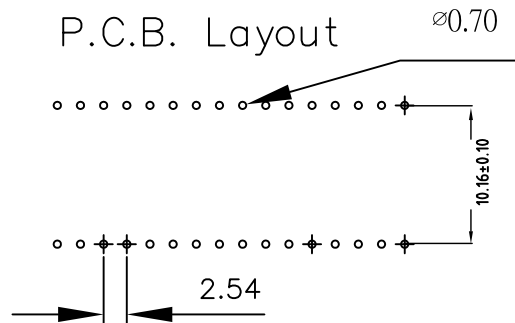
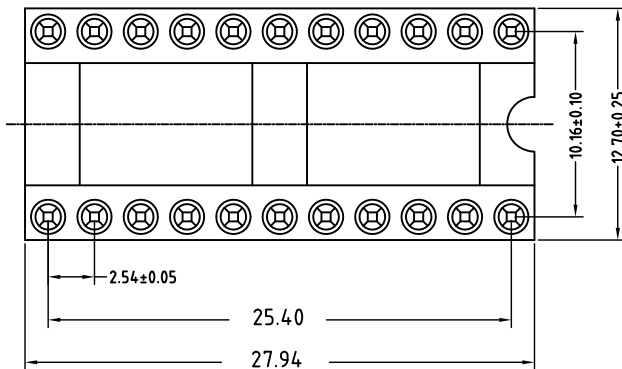


# Technical Data



## Material:

Pin(outer sleeve): Brass,machined CuZn38Pb2  
 Clip(contact 4 finger): Beryllium Copper,Phosphor Bronze heat treated  
 Plating(outer sleeve):  
 Tin plated:2um/80u" Ni, 5um/200u" Sn  
 Gold Plated:2um/80u" Ni,Full gold  
 Plating(contact): 2um/80u" Ni, gold or Tin plated  
 Insulator(black): PBT-Glass filled thermoplastic polyester UL94V-0

## Electrical:

Current rating: 3Amps/contact max.  
 Contact resistance:  $\leq 4m\Omega$ /contact  
 Insulation resistance:  $\geq 1000M\Omega$  at V=100V  
 Operating voltage: 60VAC/DC

## Mechanical:

Average insertion force with steel pin of  $\varnothing 0.43mm/0.17''$ : <250g  
 Average withdrawal force with steel pin of  $\varnothing 0.43mm/0.17''$ : >50g min.  
 Mechanical life cycle:min.200  
 Operating temperatures:  
 Gold Plated:-55°C to+105°C  
 Tin plated:-40°C to+105°C  
 Soldering temperature: +240°C,10s max.

RoHS Compliant

TOLERANCES ARE

**MORETHANALL**  
 PCB CONNECTORS  
 Cable ASSEMBLIES

煜倫股份有限公司

www.morethanall.com

DRAWING BY CY

CHECKED BY GENIUS

UNIT / mm

SCALE 1 : 1

DATE

SIZE A4

PJECTION

X, ±  
 .X ± 0.30  
 .XX ± 0.10  
 .XXX ±  
 ANG ±

照片框

ORDER INFORMATION

SIC-D04-22-LF  
 SERIES | LEADFREE  
 | 22WAY  
 | SPACING 10.16mm  
 DIP

DESCRIPTION: