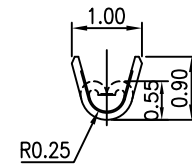
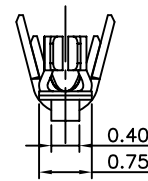
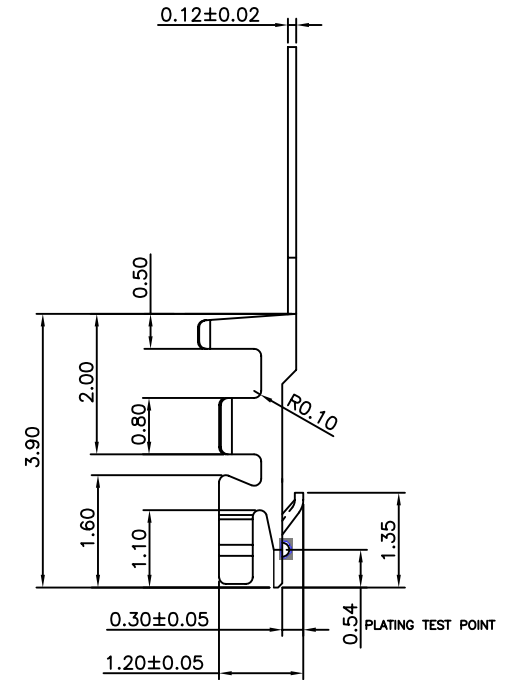
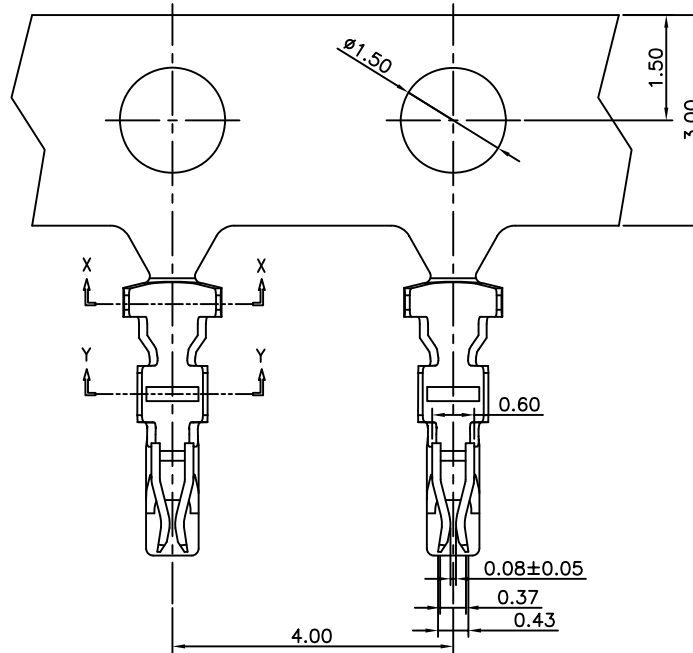
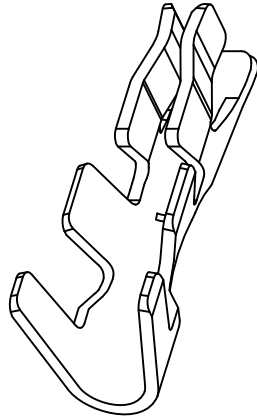
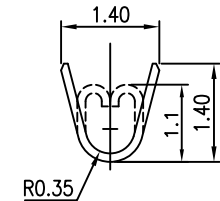


NOTES:

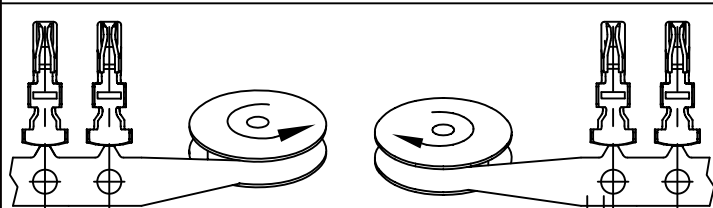
1. MATERIAL: PHOSPHOR BRONZE, THICKNESS 0.12 ± 0.02
2. PLATING:
 50u" MIN NICKEL UNDER PLATING OVERALL
 L: 100u" MIN PURE TIN PLATING ON CONTACT
 1: GOLD FLASH ON CONTACT
3. WIRE RANGE: SUITABLE FOR AWG #28~#32



SECTION Y-Y



SECTION X-X



WIND OPERATION AFTER STAMPING AND BEFORE PLATING

WIND OPERATION AFTER PLATING AND BEFORE ASSEMBLY

RoHS Compliant

TOLERANCES ARE

MORETHANALL
 PCB CONNECTORS
 Cable ASSEMBLIES

煜倫股份有限公司

www.morethanall.com

DRAWING BY CY

CHECKED BY GENIUS

UNIT / mm SCALE 1 : 1

DATE

SIZE A4

X. ± 0.50
 .X ± 0.25
 .XX ± 0.15
 .XXX ± 0.10
 ANG ± 2°

PJECTION

照片框

ORDER INFORMATION

SH1-T-28-LF
 SERIES | T LEADFREE
 28 AWG
 TERMINAL

DESCRIPTION: 1.0mm WTB CONN TERMINAL