

RECOMMENDED PCB LAYOUT

Tolerance: ± 0.05

Material:

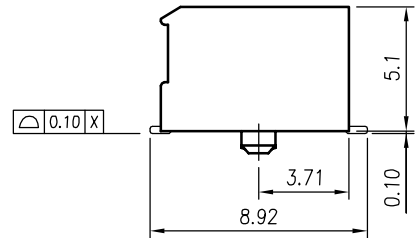
Insulator: Glass-Reinforced Thermoplastic, UL 94V-0, Color: Black.
 Contact: Phosphor Bronze.
 Contact Plating: Selected Gold Plating On Contact Area.
 1u" Gold Min. Over Nickel Underplated Overall.
 ROHS Compliant

Electrical:

Voltage Rating: 100V AC.
 Current Rating: 1 A.
 Contact Resistance: 40 milliohms Max.
 Dielectric Withstanding Voltage: 500V AC Min.
 Insulation Resistance: 1000 Megaohms Min.

Environmental:

Temperature Range: -40°C to +85°C.



RoHS Compliant

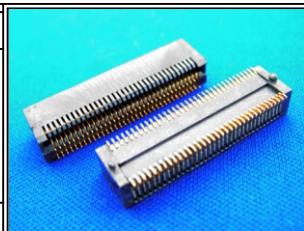
TOLERANCES ARE



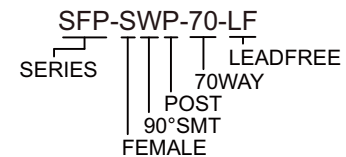
煜倫股份有限公司

www.morethanall.com

DRAWING BY CY		X, \pm .X \pm .XX \pm .XXX \pm ANG \pm
CHECKED BY GENIUS		
UNIT / mm	SCALE 1 : 1	
DATE		
SIZE A4	PJECTION	



ORDER INFORMATION



DESCRIPTION: SFP Connector 0.8mm Pitch