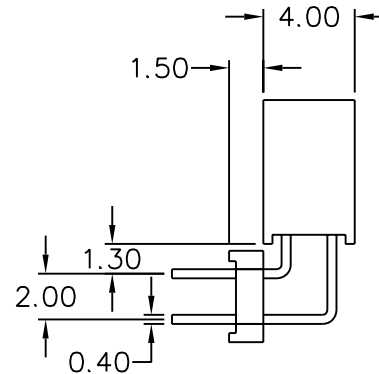
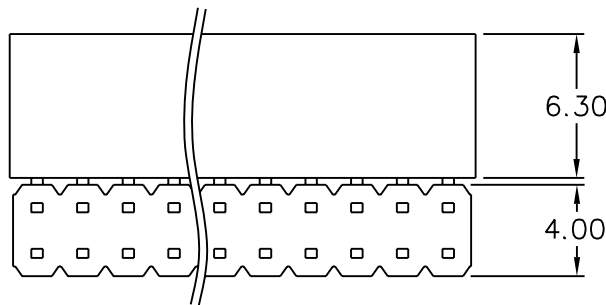
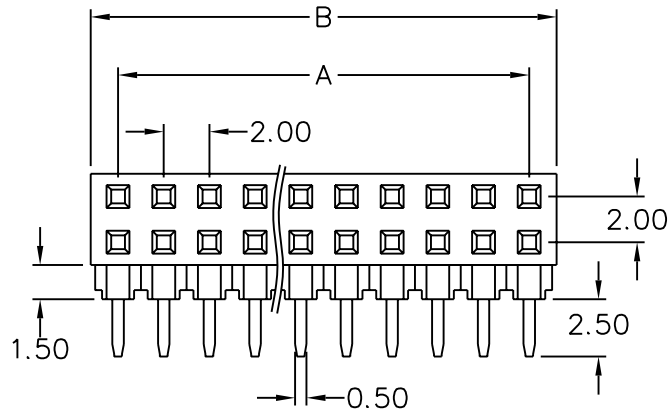
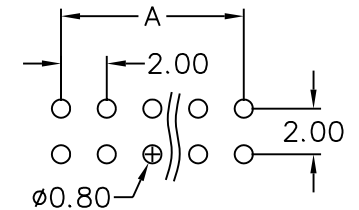


No. of Contacts	DIMENSIONS		REMARK (備註)
	A	B	
04	2.00	4.40	
06	4.00	6.40	
08	6.00	8.40	
10	8.00	10.40	
12	10.00	12.40	
14	12.00	14.40	
16	14.00	16.40	
18	16.00	18.40	
20	18.00	20.40	
22	20.00	22.40	
24	22.00	24.40	
26	24.00	26.40	
28	26.00	28.40	
30	28.00	30.40	
32	30.00	32.40	
34	32.00	34.40	
36	34.00	36.40	
38	36.00	38.40	
40	38.00	40.40	
42	40.00	42.40	
44	42.00	44.40	
46	44.00	46.40	
48	46.00	48.40	
50	48.00	50.40	
52	50.00	52.40	
54	52.00	54.40	
56	54.00	56.40	
58	56.00	58.40	
60	58.00	60.40	
62	60.00	62.40	
64	62.00	64.40	
66	64.00	66.40	
68	66.00	68.40	
70	68.00	70.40	
72	70.00	72.40	
74	72.00	74.40	
76	74.00	76.40	
78	76.00	78.40	
80	78.00	80.40	



Recommended P.C.Board Hole Layout



SPECIFICATIONS

Current Rating: 1 Amp
 Insulator resistance: 5000 Megohms min.
 Contact resistance: 20 m ohms max.
 Dielectric withstanding: AC 500 V
 Operating Temperature: -40°~+105°C
 Max Processing Temp: 230° for 30 seconds
 Contact Material: Copper Alloy
 Insulator Material: High Temperature plastic,UL 94V-0

Finish: Tin,Gold or Duplex plated

◎ Standard: Duplex plated

◎ Note:

Duplex plating: gold plated on contact area,
Tin on solder area

MORETHANALL
CONNECTORS
ASSEMBLIES

PART NO. SE-RA-2Xxx

DWG NO. SE-RA-2Xxx

CHECKED BY CY

TOLERANCES ARE

DESCRIP TION:

FILE NO.

DRAWING BY

.X ±0.25
.XX
.XXX
AWG

AREA

REVISIONS

HK

DATE

焯倫有限公司

UNIT / mm

SCALE 1:1

PROJECTION

