

MATING: ① INSERTING(30°) — ② ROTATING — ③ FIXED
 UNMATING: ④ UNFIXED — ⑤ ROTATING — ⑥ WITHDRAWING

NOTES:

1.MATERIAL:

- 1.1 HOUSING:LCP,UL94V-0,COLOR:BLACK.
- 1.2 CONTACT:PHOSPHOR BRONZE.
- 1.3 SOLDER PEG AND LATCH:STAINLESS STEEL.

2. FINISH:

- 2.1 CONTACT: 50u" MIN NICKEL UNDERPLATED ALL OVER.
GOLD FALSH PLATING ON SOLDERTAIL.
GOLD PLATING (THICKNESS SEE TABLE) ON CONTACT AREA.

2.2 SOLDER PEG:

- 50u" MIN NICKEL UNDERPLATED ALL OVER.
- AU 2u" MAX ON SOLDERTAIL.

3. DATE CODE : YYWWDLX

YY: YEAR (09: 2009)

WW: WEEK (25: THE 25TH WEEK)

D: DAY (1~7: SUNDAY~SATURDAY)

L: LINE NUMBER OF ASSEMBLY (A: LINE A)

X: D OR N (D: DAY; N: NIGHT)

照片框

RoHS Compliant

TOLERANCES ARE

X, ±
 .X ±
 .XX ±
 .XXX ±
 ANG ±

DRAWING BY CY

CHECKED BY GENIUS

UNIT / mm SCALE 1 : 1

DATE

SIZE A4

PJECTION

ORDER INFORMATION

SDM5-W92V12R-116144-LF

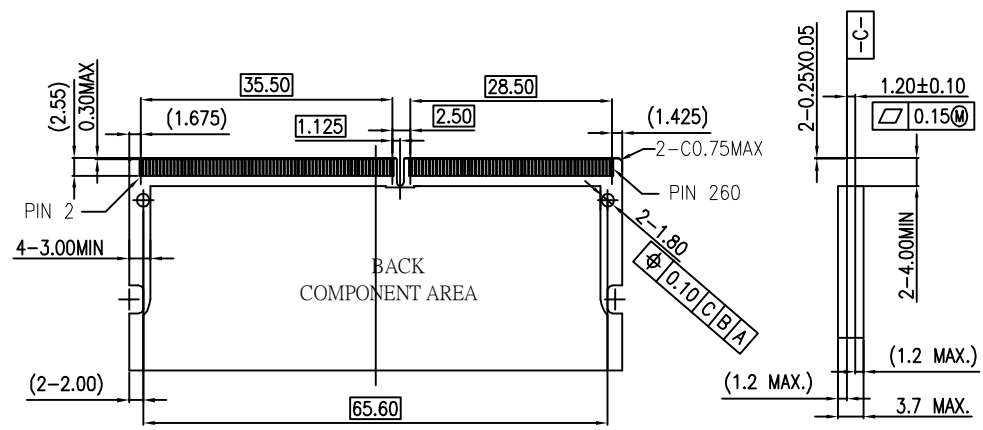
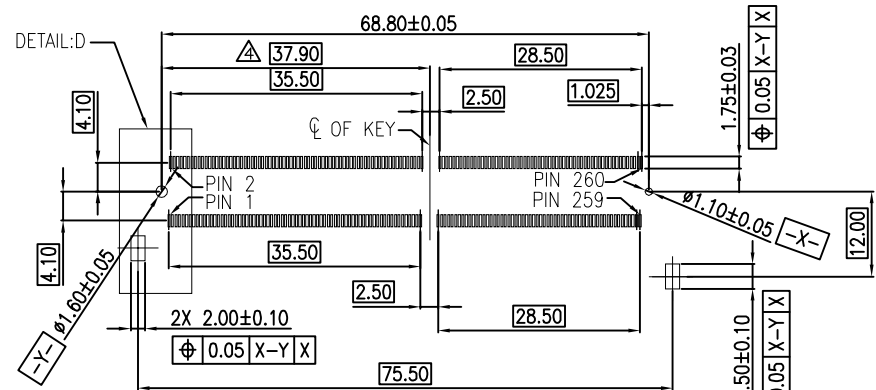
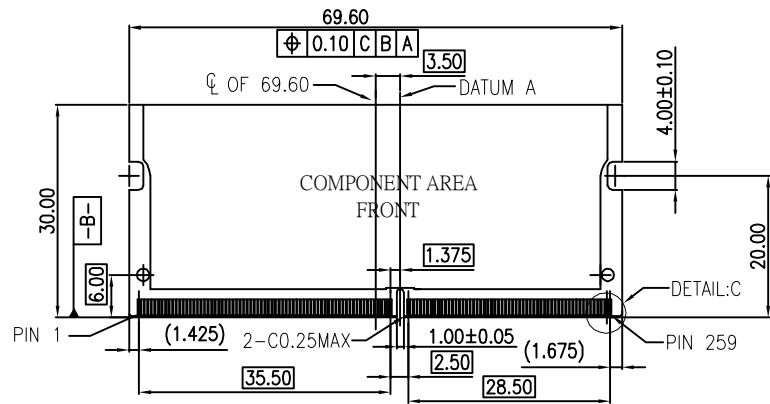
SERIES | | | | LEADFREE
 | | | | 116+144 WAY
 | | | | REEL
 | | | | 12V
 | | | | HIGH 9.2mm
 | | | | 90°SMT

DESCRIPTION: DDR4 SO DIMM 260P 9.2H RVS

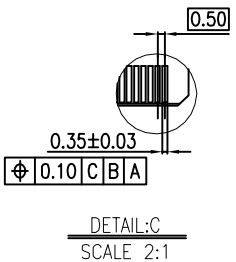
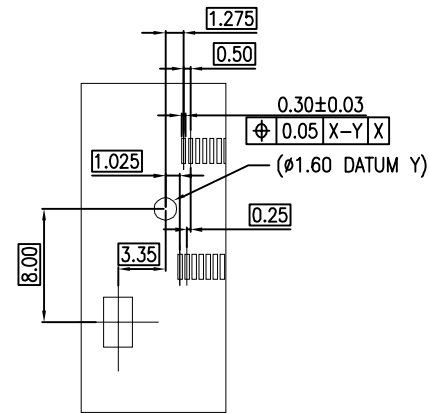
MORETHANALL
 PCB CONNECTORS
 Cable ASSEMBLIES

煜倫股份有限公司

www.morethanall.com



RECOMMEND PCB LAYOUT
THE TOLERANCE UNLESS SPECIFIED IS ±0.05MM



DETAIL:D
SCALE 2:1

RoHS Compliant

TOLERANCES ARE

照片框

ORDER INFORMATION

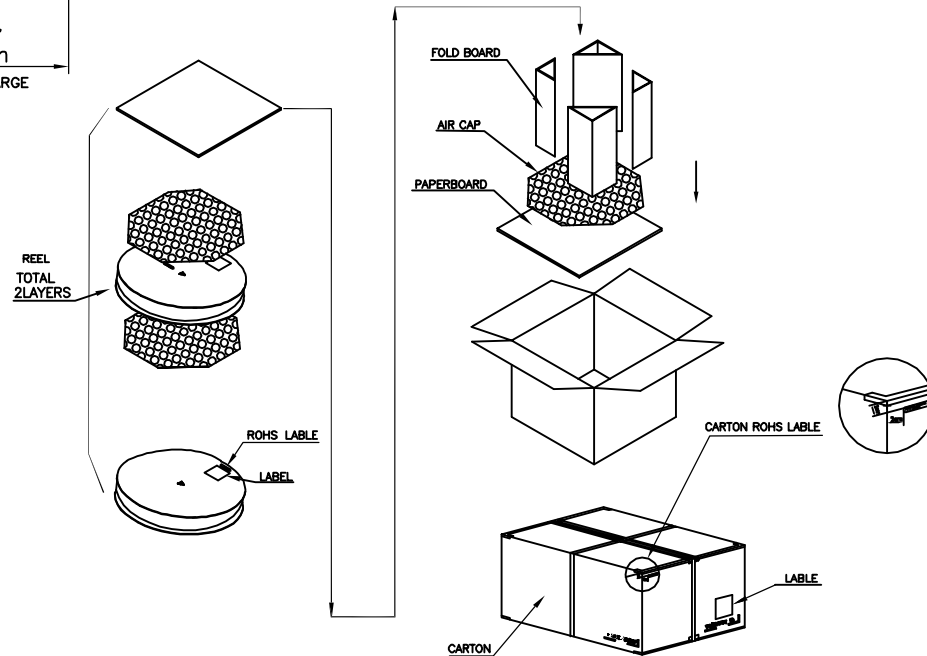
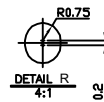
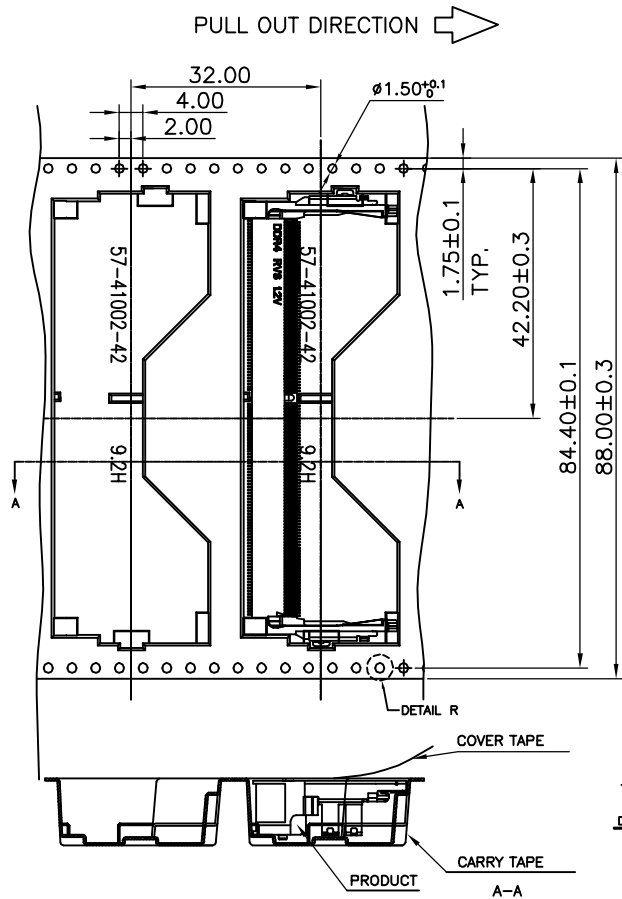
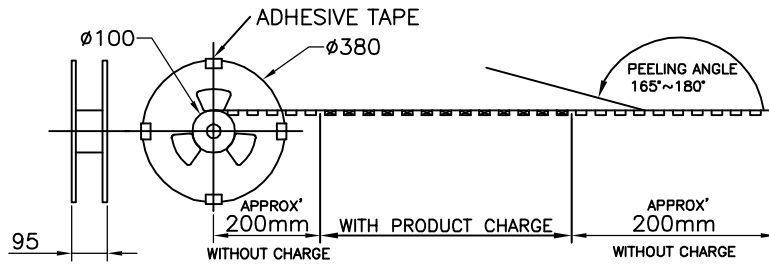
SDM5-W92V12R-116144-LF
SERIES | REEL | LEADFREE
12V | HIGH 9.2mm | 116+144 WAY
90°SMT

MORETHANALL
PCB CONNECTORS
Cable ASSEMBLIES
煜倫股份有限公司
www.morethanall.com

DRAWING BY CY
CHECKED BY GENIUS
UNIT / mm SCALE 1:1
DATE
SIZE A4 PPROJECTION

X, ±
.X ±
.XX ±
.XXX ±
ANG ±

DESCRIPTION: DDR4 SO DIMM 260P 9.2H RVS



RoHS Compliant

TOLERANCES ARE

MORETHANALL
 PCB CONNECTORS
 Cable ASSEMBLIES

DRAWING BY CY

X.±

CHECKED BY GENIUS

.X±

UNIT / mm

SCALE 1 : 1

.XXX±

DATE

ANG±

SIZE A4

PJECTION

照片框

ORDER INFORMATION

SDM5-W92V12R-116144-LF

SERIES

REEL

12V
 HIGH 9.2mm
 90°SMT

LEADFREE
 116+144 WAY

煜倫股份有限公司

www.morethanall.com

DESCRIPTION: DDR4 SO DIMM 260P 9.2H RVS