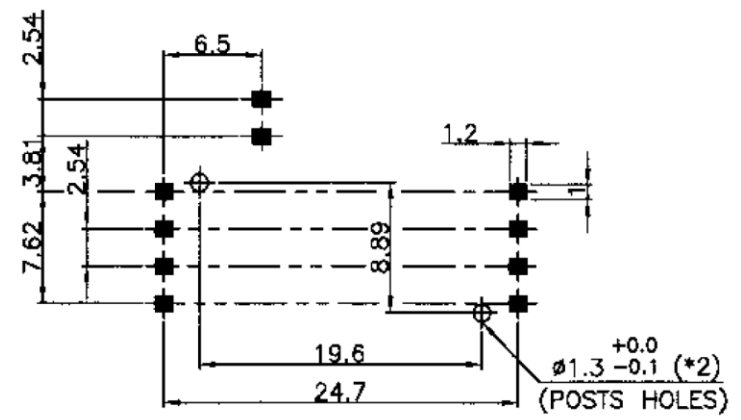
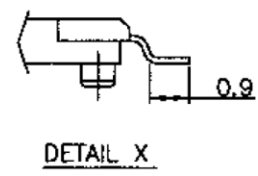
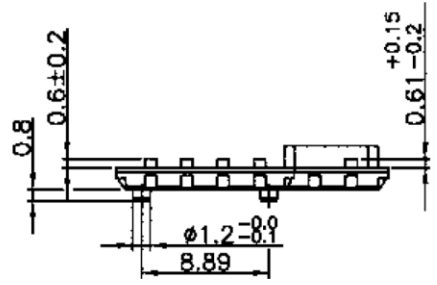
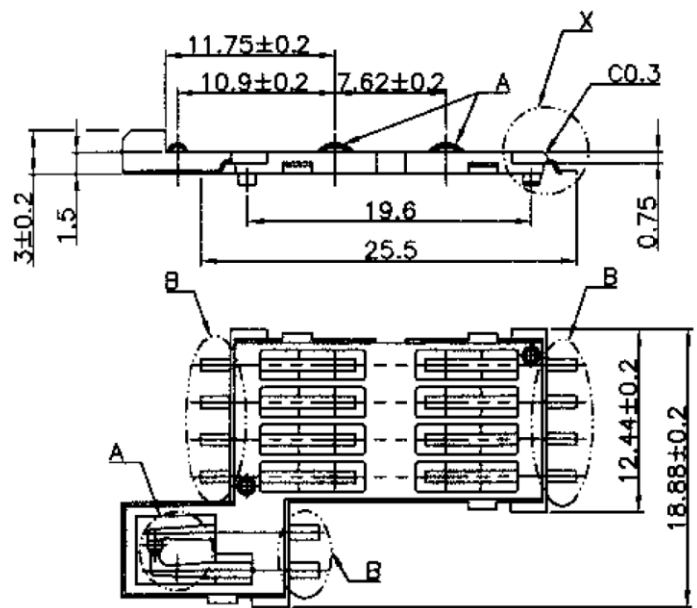


- Material and Finish:**
1. Insulator material: Nylon-9T, UL94V-0, Color: Black
 2. Contact Material: Phosphor Bronze
 3. Contact Plated: A: 50u" Gold Plated
B: Tin Plated
 4. Switch Terminal Material: Phosphor Bronze
 5. Switch Terminal Plated: A: 50u" Gold Plated
B: Tin Plated
 6. Contact Rating: 0.5 Amp Max.
 7. Contact Resistance: 100 mohms Max.
 8. Insulation Resistance: 1000 Mohms Min.
 9. Dielectric Withstanding Voltage: 500V AC
 10. Operating Temperature: -40°C to +90°C
 11. Card Detection Switch (NORMAL OPEN)

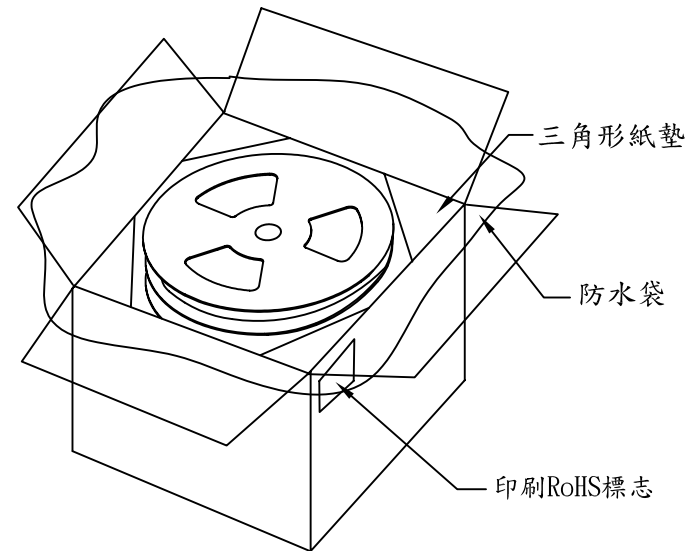
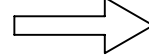
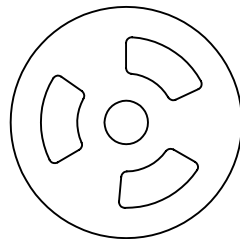
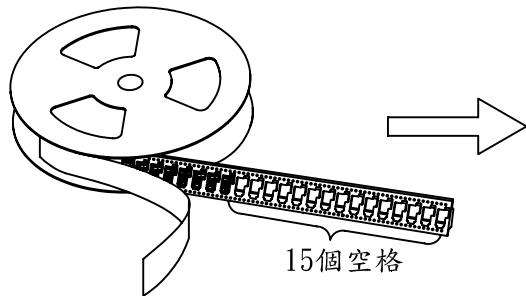


SCZ-W2415PBS50R-08
 S50:SEMI-GOLD 50u"
 RoHS Compliant



煜倫股份有限公司

PART NO. SCZ-W2415PBS50R-08		CHECKED BY CY		TOLERANCES ARE .X±0.2 .XX± .XXX± ANG	DESCRIPTION:			
DWG NO. SCZ-W2415PBS50R-08		DRAWING BY						
FILE NO.		PROJECTION		AREA	REVISIONS	HK	DATE	



注：

1. 卷軸帶卷入PLASTIC REEL開始時空10格不放成品，而結束時空15格不放成品。依Carrite Tape料槽模型將產品正確放入，產品的SMT焊腳朝下，注意作業時需戴手指套，產品須放置整齊，方向一致。
2. 每盤封裝500PCS。
3. 將6盤包裝好的產品疊起平放在防水袋內，疊好后在紙箱底部放1PC隔板，再將裝好的產品同防水袋一起放入紙箱，防水袋口需折好，箱內四周空隙處需插三角形紙墊填充，以免晃動損傷產品，在最上一層還需放1PC隔板。
4. 將裝好產品的紙箱用封箱膠紙呈"工"字形封口。
5. 注意正确填寫外箱內容(參照<<包裝明細表>>填寫)。

6	NA070490	紙箱	35*35*35cm-RO 材質:K=K	1/3000	PC
5	NA090240	隔板	34*34cm-RO	2/3000	PCS
4	JD020010	防水袋	30"*30"*0.05mm-RO	1/3000	PC
3	JC090200	REEL	SC-02-RO PLASTIC REEL	1/500	PC
2	JC090180	TAPE	SC-02-RO CARRIER TAPE	1/500	RL
1	JC090550	COVER	SC-02-RO COVER TAPE 熱封式 透明膠帶		RL
項目	材料料號	品名	規格	用量	單位



煜倫股份有限公司

PART NO. SCZ-W2415PBS50R-08		CHECKED BY CY	TOLERANCES ARE .X ± 0.2 .XX ± .XXX ± ANG	DESCRIP TION:			
DWG NO. SCZ-W2415PBS50R-08							
FILE NO.		DRAWING BY	PROJECTION	AREA	REVISIONS	HK	DATE
UNIT / mm	SCALE 1:1						