

## TECHNICAL CHARACTERISTICS

### 1. General Characteristics

Dimension: 21.25L x 11.18W x 2.50H mm  
 Weight: Approx. 0.33 g  
 Contact principle: Friction technology  
 Operating position: Shaft up / Down / Horizontal  
 Mounting System: SMT Type (without post)  
 Durability: 12,000 cycles min.

### 2. Mechanical Characteristics

Insulation material: Thermoplastic, UL 94V-0  
 RoHS Directive 2011/65/EU Compliant

### 3. Electrical Characteristics

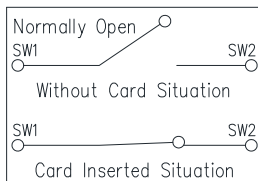
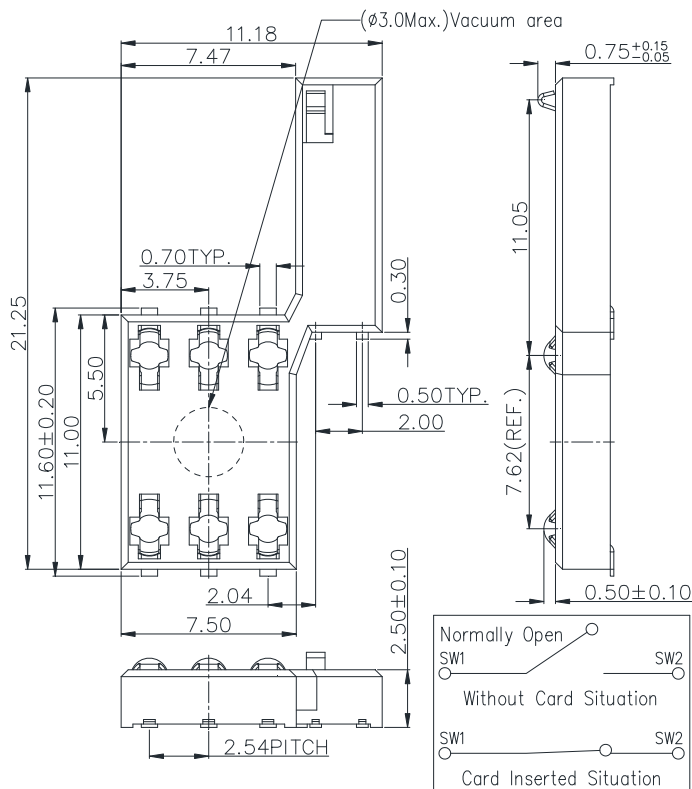
Number of contacts: 6 pins  
 Contact resistance: 50 m typical, 100 m max.  
 Insulation resistance: >1000 M / 500 VDC  
 Switch type: Blade  
 Operation: Normally Open

### 4. Solderability

Wave: Not applicable  
 IR reflow: 260 C, 10 sec. Max.  
 Manual soldering: 360 C, 3 sec. Max.

### 5. Environmental Characteristics

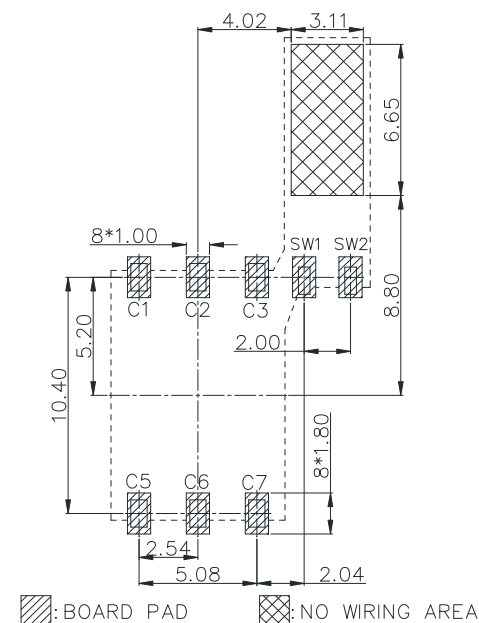
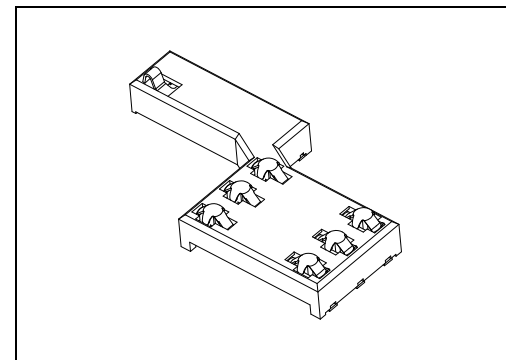
Operating temperature: - 40 C ~ + 85 C  
 Operating humidity: 10 % ~ 95 % RH  
 Storage temperature: - 40 C ~ + 85 C  
 Storage humidity: 10 % ~ 95 % RH



Recommend card slot height: 1.0 mm

※Metal switch can be touched. Must keep 0.1 mm min. gap above switch.

Unit: mm; Tolerances: 0.15 mm  
**Mechanical outline dimension**



▨: BOARD PAD    ▩: NO WIRING AREA

Unit: mm; Tolerances: 0.05 mm  
**Reference dimension for PCB layout**

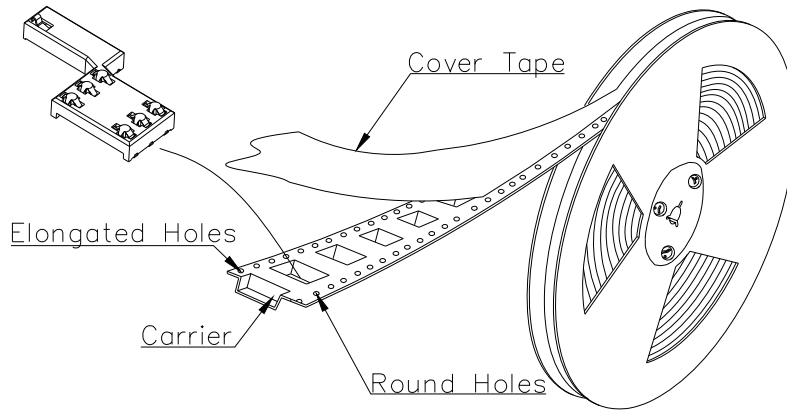
SCZ-W1025XBR-06-LF  
 LEADFREE

RoHS Compliant

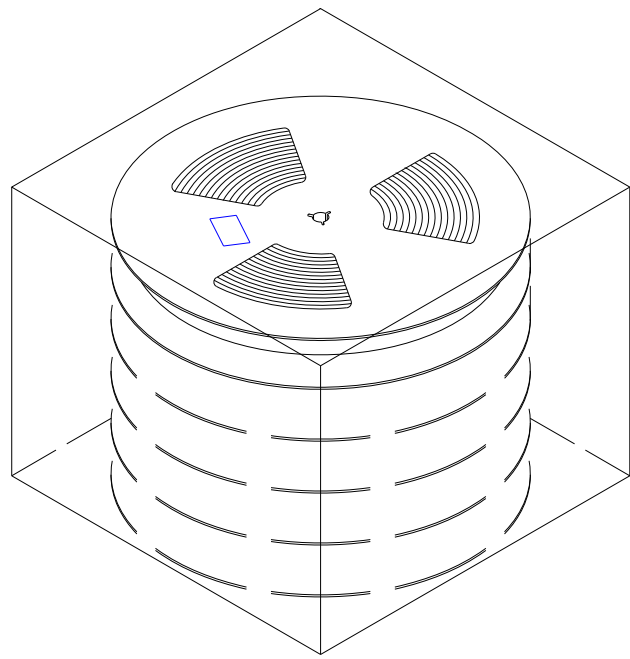
**MORETHANALL**  
 CONNECTORS  
 ASSEMBLIES

煜倫股份有限公司

PART NO. SCZ-W1025XBR-06		CHECKED BY CY		TOLERANCES ARE		DESCRIPTION:	
DWG NO. SCZ-W1025XBR-06		DRAWING BY		X, ± .X ± .XX ± .XXX ± ANG			
FILE NO.		PROJECTION		AREA	REVISIONS	DATE	
UNIT / mm	SCALE 1:1						



**N.W.: 0.33 KGS**  
**G.W.: 0.88 KGS**  
**Q't y: 1,000 PCs per reel**  
**Meas.: dia. 33 CM, W 3.2 CM**



**N.W.: 1.98 KGS**  
**G.W.: 6.75 KGS**  
**Q't y: 6,000 PCs per carton**  
**(6 reels set in order)**  
**Meas.: 35.0L x 35.0W x 32.5H CM**

	PART NO. SCZ-W1025XBR-06		TOLERANCES ARE X. ± .X ± .XX ± .XXX ± ANG	DESCRIPTION:		
	DWG NO. SCZ-W1025XBR-06					
焯倫股份有限公司	FILE NO.		DRAWING BY	AREA	REVISIONS	DATE
	UNIT / mm	SCALE 1:1	PROJECTION			