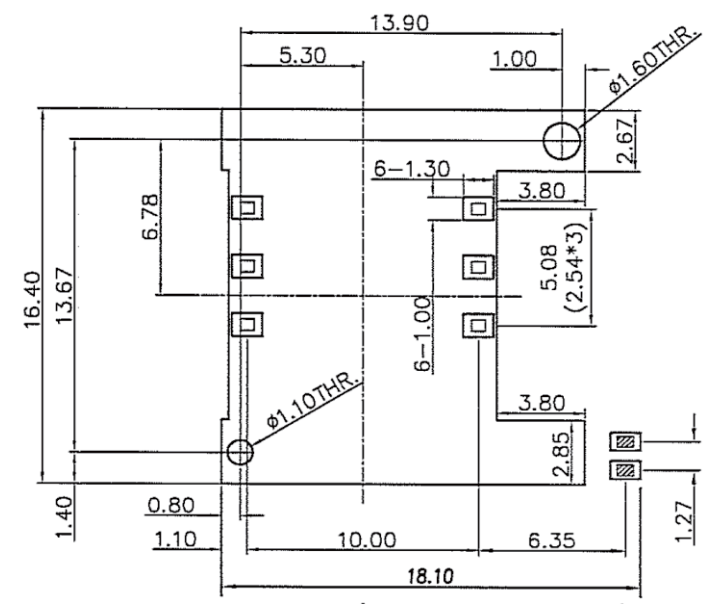


Notes:
Material: Phosphor Bronze(C5191-H)
 SIMM Card Connector, With
 Cover, Type 1,8 Pin
 Physical:
 Housing: LCP UL 94V-0
 Contact: Selective Gold Flash
 Specifications:
 Voltage Current rating: 1A. 50V AC
 Insulation Resistance: 1000Mohm Min
 Contact Withstanding Voltage:
 AC 500V For 1 Minute
 Temperature Rating: -40° To +85°



P.C.B. LAYOUT (TOLERANCES: ± 0.10 mm)

RoHS Compliant

TOLERANCES ARE



DRAWING BY CY

X. \pm

CHECKED BY GENIUS

.X \pm

UNIT / mm

SCALE 1 : 1

.XX \pm

DATE

.XXX \pm

ANG \pm

SIZE A4

PROJECTION

照片框

ORDER INFORMATION

SCU-W1026PBR-06-LF

SERIES | | | | | LEADFREE

06WAY

REEL

OPEN SWITCH

POST

BODY HIGH 2.6mm

90°SMT
PAD TO PAD 10.0mm

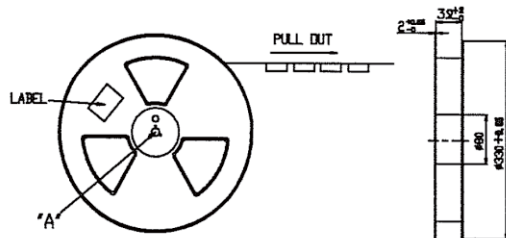
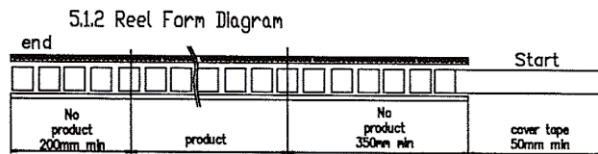
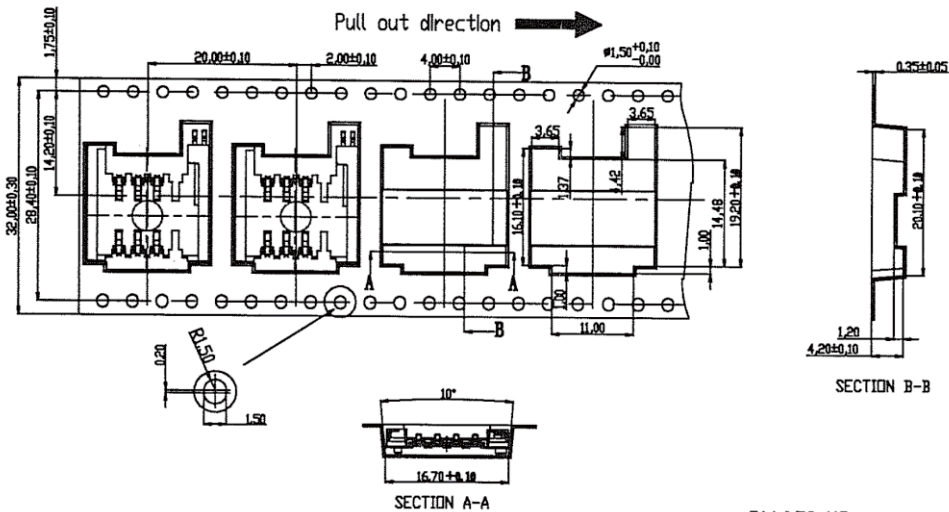
DESCRIPTION:

煜倫股份有限公司

www.morethanall.com

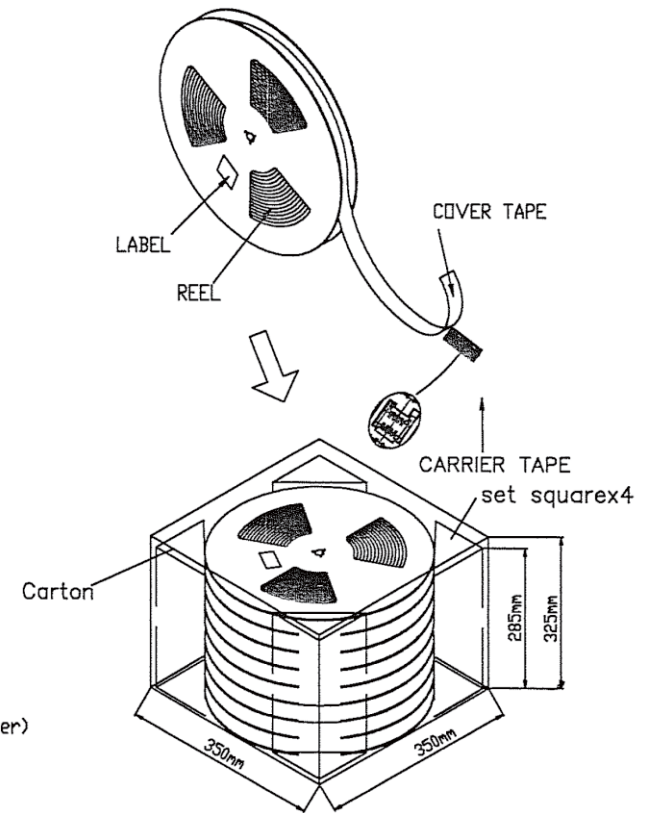
PACKING INFORMATION

Tape carrier packing information
Carrier Dimensions Diagram



G.W:0.78 KG
Q'ty:800 pcs/Reel

N.W:6.20 KG
G.W:8.00 KG
Q'ty : 6400 pcs per Carton (8 Reel set in order)
Meas : 35.00LX35.00WX31.50H cm



RoHS Compliant

TOLERANCES ARE

DRAWING BY CY

X. ±

CHECKED BY GENIUS

.X ±

UNIT / mm

SCALE 1 : 1

.XX ±

DATE

.XXX ±

ANG ±

SIZE A4

PJECTION

照片框

ORDER INFORMATION

SCU-W1026PBR-06-LF

SERIES

LEADFREE

06WAY

REEL

OPEN SWITCH

POST

BODY HIGH 2.6mm

90°SMT

PAD TO PAD 10.0mm

DESCRIPTION:

MORETHANALL
PCB CONNECTORS
Cable ASSEMBLIES

煜倫股份有限公司

www.morethanall.com