

NOTE:

1.CARD INSERTION SPECIFICATION

A. CARD INSERTION DEPTH:35.2mm.

B. CARD THICKNESS=0.7-0.8mm.

2.READING CONTACT:

POSITION: ACCORDING TO

ISO 07816-2 C1-C8.

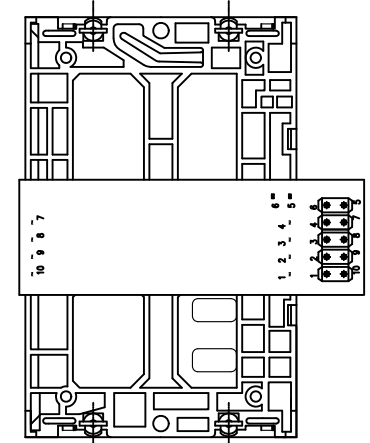
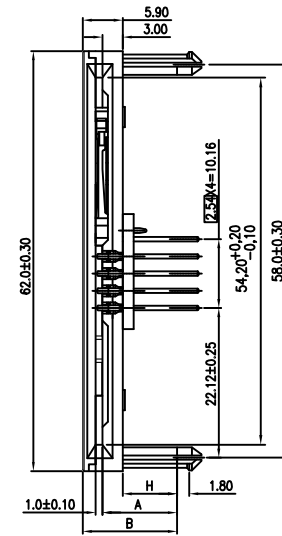
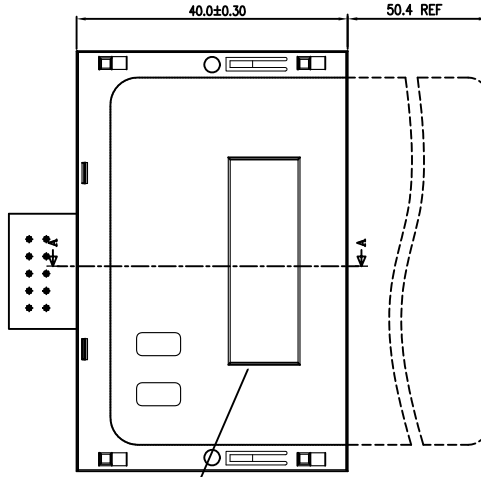
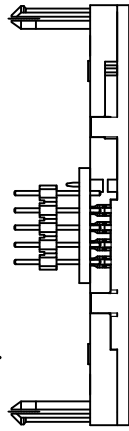
CONTACT FORCE:30-60 GRAM.

3.MATERIAL AND FINISH:

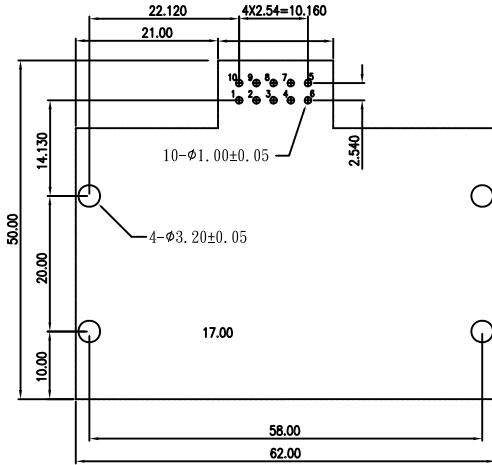
A. HOUSING: PBT UL 94-V0 COLOR: BLACK.

B. CONTACT: COPPER ALLOY.SELECTIVE PLATING AU OVER 50u" NI MIN UNDERPLAT TIN ON TAIL ZONE.

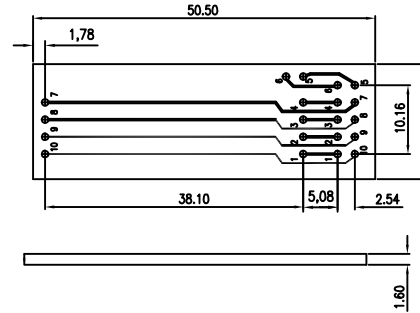
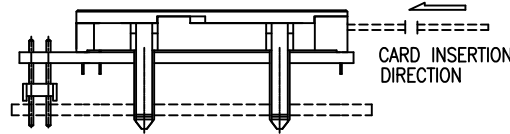
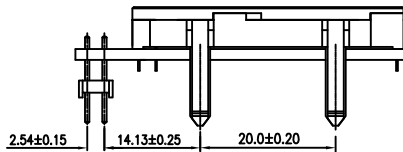
C. SWITCH: COPPER ALLOY.SELECTIVE PLATING AU OVER 50u" NI MIN UNDERPLAT TIN ON TAIL ZONE.



LOGO OPTION



RECOMMENDED PCB LAYOUT



NOMAL CLOSE NOMAL OPEN  
SWITCH CONTACT TYPE

SCF1B-R59xyy-08-LF

A:CLOSE B:OPEN LEADFREE  
73:7.3/STAND OFF  
93:9.3/STAND OFF  
A1:11.3/STAND OFF

RoHS Compliant

11.30	14.20	17.20
9.30	12.30	15.20
7.30	10.30	13.20
Standoff H	Dim. A	Total B

**MORETHANALL**  
CONNECTORS  
ASSEMBLIES

PART NO.SCF1B-R59xyy-08

DWG NO. SCF1B-R59xyy-08

FILE NO.

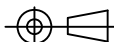
UNIT / mm

SCALE 1:1

CHECKED BY CY

DRAWING BY

PROJECTION



TOLERANCES ARE

.X ± 0.2  
.XX ±  
.XXX ±  
AWG

DESCRIP TION:

Smart Card Connector  
Series Long Post +(1 PCB) Type

AREA

REVISIONS

HK

DATE

煜倫股份有限公司