

Signal Segment	
Name	Type
S1	GND
S2	A+
S3	A-
S4	GND
S5	B-
S6	B+
S7	GND

Power Segment	
Name	Type
P1	V33
P2	V33
P3	V33
P4	GND
P5	GND
P6	GND
P7	V5
P8	V5
P9	V5
P10	GND
P11	DAS/DSS
P12	GND
P13	V12
P14	V12
P15	V12

Notes:

*Material

Housing: LCP, UL 94V-0 rated;
 Color: Black.
 Contact: Phosphor Bronze
 Plating: Gold Plating over Nickel on contact area
 Tin plating on solder Tail.

*Mechanical

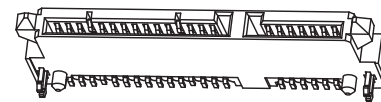
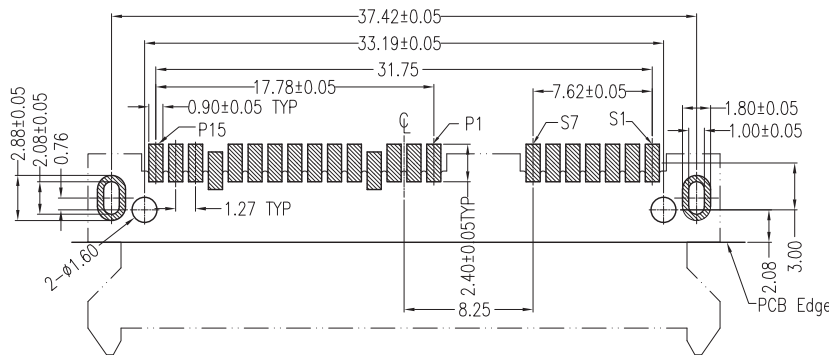
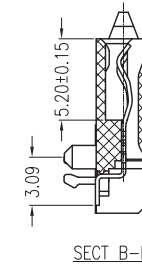
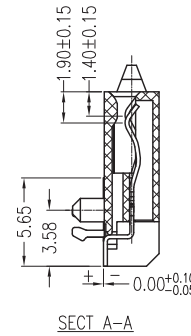
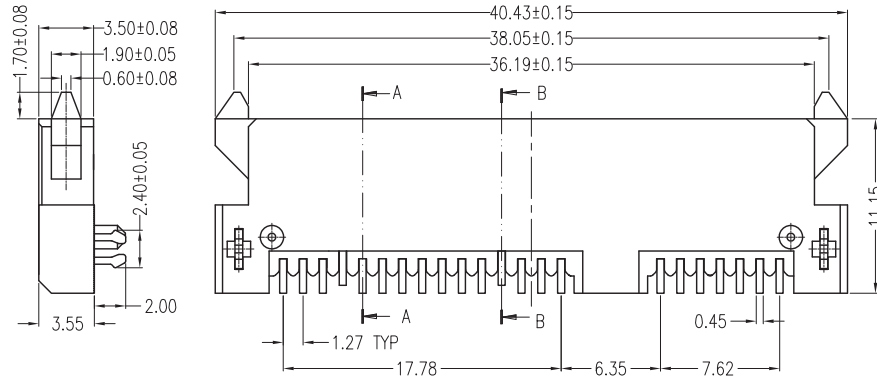
Insertion Force: 45N max.
 Withdrawal Force: 10N min.
 Durability: 500 cycles

*Electrical Specification

Current Rating: 1.5 Ampere per contact
 Contact Resistance: 30 Milliohms max.
 Insulation Resistance: 1000 Megohms min.
 Dielectric Withstanding Voltage: 500 VAC

*Environmental

Operating Temperature: -55°C to +85°C



Product 3D

P.C.B LAYOUT (T=1.20)
TOP VIEW

RoHS Compliant

TOLERANCES ARE

MORETHANALL
PCB CONNECTORS
Cable ASSEMBLIES

DRAWING BY CY

X, ±

CHECKED BY GENIUS

.X ±

UNIT / mm

SCALE 1 : 1

.XX ±

DATE

.XXX ±

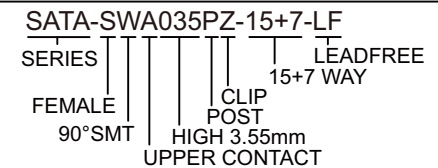
ANG ±

SIZE A4

P PROJECTION

照片框

ORDER INFORMATION



DESCRIPTION: SATA 7+15P Female SMT Type(3.55)

煜倫股份有限公司

www.morethanall.com