

Signal Segment	
Name	Type
S1	GND
S2	A+
S3	A-
S4	GND
S5	B-
S6	B+
S7	GND

Power Segment			
Name	Type	Name	Type
P1	V3.3	P9	V5
P2	V3.3	P10	GND
P3	V3.3	P11	DAS/DSS
P4	GND	P12	GND
P5	GND	P13	V12
P6	GND	P14	V12
P7	V5	P15	V12
P8	V5		

**Notes:**

**\*Material**  
 Housing: LCP, UL 94V-0 rated, Color: Black;  
 Contact: Phosphor Bronze;  
 Plating: Au Plating on contact area;  
 Sn(100u"Min) plating on solder Tail;  
 Ni(50u"Min) contact underplating overall;

**\*Mechanical**

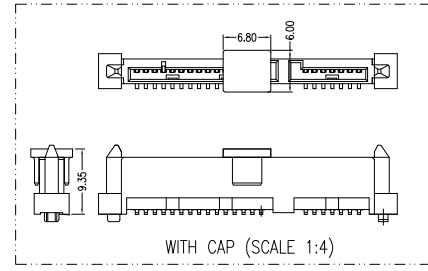
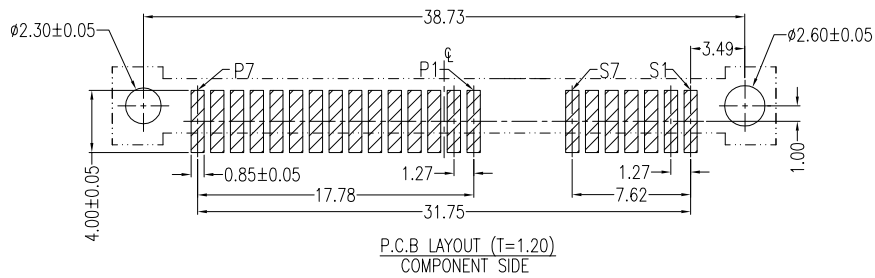
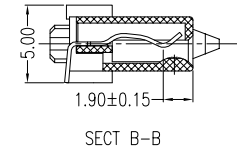
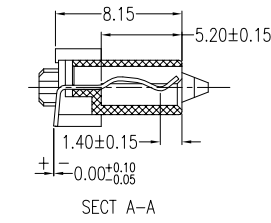
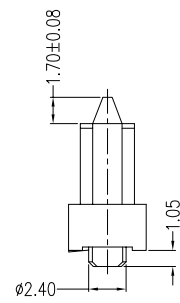
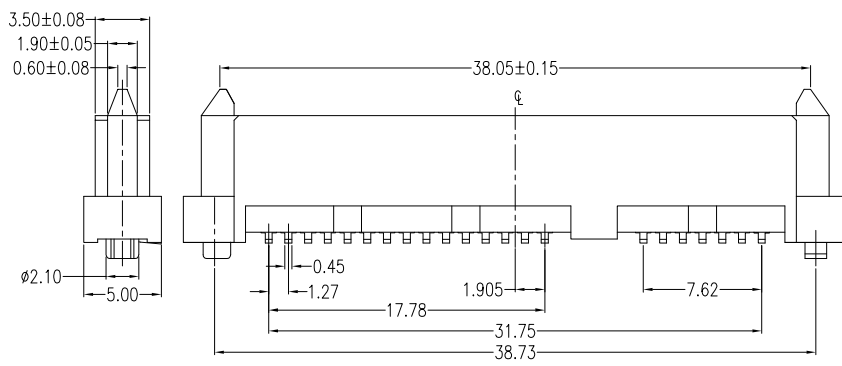
Insertion Force: 45N Max;  
 Withdrawal Force: 10N Min;  
 Durability: 500 cycles.

**\*Electrical Specification**

Current Rating: 1.5 Ampere per contact;  
 Contact Resistance: 30 mΩ Max;  
 Insulation Resistance: 1000 MΩ Min;  
 Dielectric Withstanding Voltage: 500V AC.

**\*Environmental**

Operating Temperature: -55°C to +85°C.



**RoHS Compliant**

TOLERANCES ARE

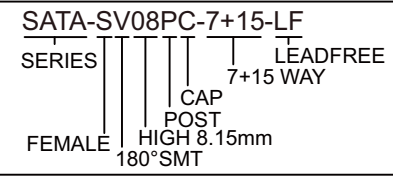


DRAWING BY CY  
 CHECKED BY GENIUS  
 UNIT / mm SCALE 1 : 1  
 DATE  
 SIZE A4 PPROJECTION

X, ±  
 .X ± 0.35  
 .XX ± 0.25  
 .XXX ± 0.15  
 ANG ± 3°

照片框

**ORDER INFORMATION**



DESCRIPTION: SATA 7+15P 180° SMT Type Short Plastic Post Female(38.73)

煜倫股份有限公司

www.morethanall.com