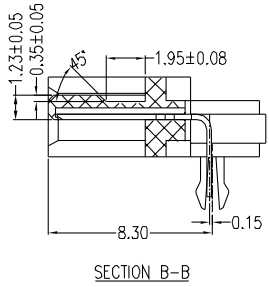
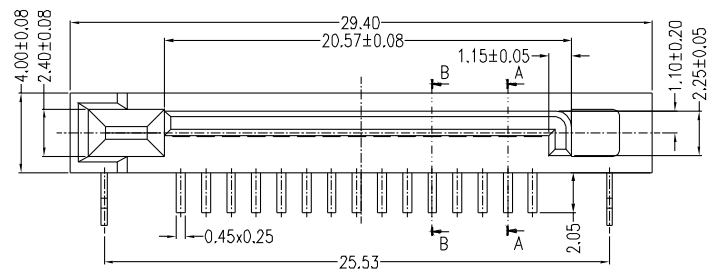
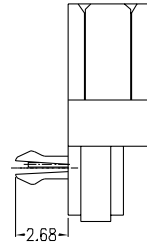
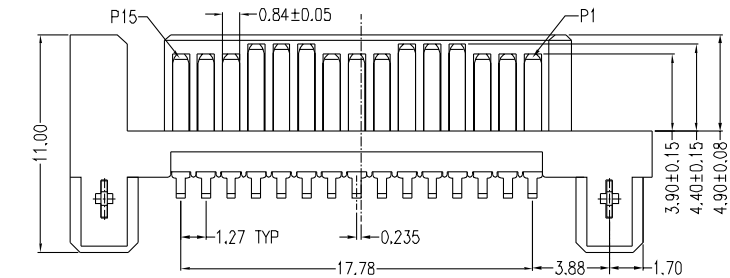


PIN NO.	SIGNAL NAME
P1	V33
P2	V33
P3	V33
P4	GND
P5	GND
P6	GND
P7	V5
P8	V5
P9	V5
P10	GND
P11	DAS/DSS
P12	GND
P13	V12
P14	V12
P15	V12

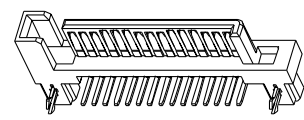
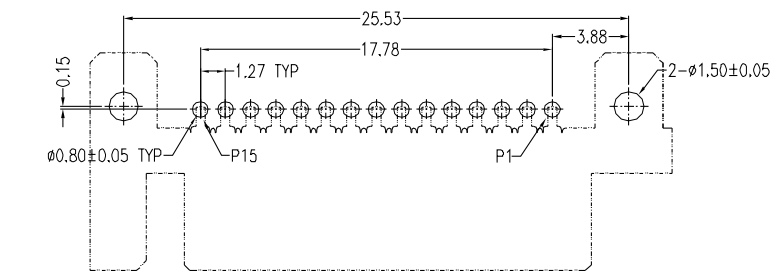
NOTES:
***Material**
 Housing: LCP+50%G.F., UL94 V-0 Rated, Color: Black;
 Contact: Brass;
 Plating: Au Plating On Contact Area;
 Sn(100u" Min.) Plating On Solder Tail;
 Ni(40u" Min.) Underplating Overall.
 Harpoon: Brass
 Plating: Sn(100u" Min.) Plating Over Ni(50u" Min.)



***Mechanical**
 Insertion Force: 45N Max.
 Withdrawal Force: 10N Min.
 Durability: 500 cycles
***Electrical Specification**
 Current Rating: 1.5 Ampere Per Contact
 Contact Resistance: 30mΩ Max.
 Insulation Resistance: 1000MΩ Min.
 Dielectric Withstanding Voltage: 500V AC



***Environmental**
 Operating Temperature: -55°C To +85°C



P.C.B. LAYOUT T=1.60mm
 COMPONENT SIDE

SATA-PRA-15-LF
LEADFREE
RoHS Compliant

MORETHANALL
 CONNECTORS
 ASSEMBLIES

煜倫股份有限公司

PART NO. SATA-PRA-15	
DWG NO. SATA-PRA-15	
FILE NO.	
UNIT / mm	SCALE 1:1

CHECKED BY CY	TOLERANCES ARE
DRAWING BY	X ±
PROJECTION	.X ± 0.38
	.XX ± 0.25
	.XXX ± 0.20
	ANG

DESCRIPTION:	SATA 15P Right Angle Standard DIP Type Male
AREA	REVISIONS
	DATE