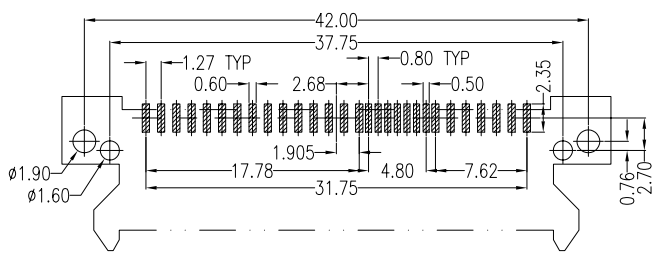
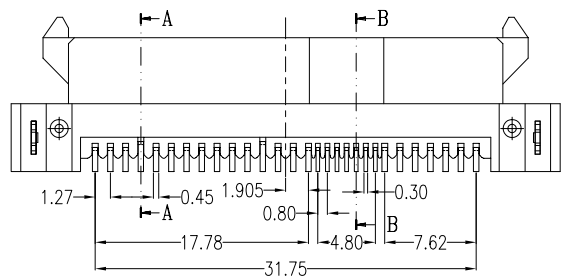
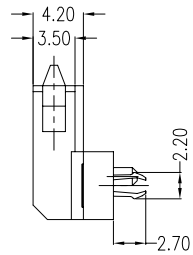
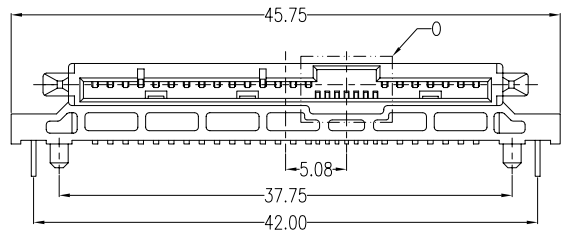
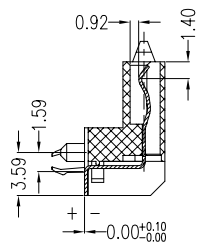


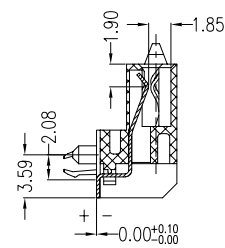
VIEW 0
SCALE 2:1



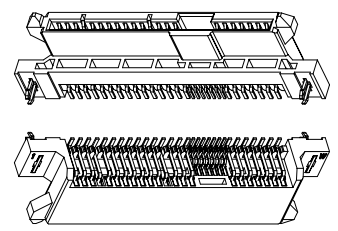
PCB LAYOUT



SECTION A-A



SECTION B-B



Product 3D Dwg

NOTES:

***Material**
 Housing: LCP, UL 94V-0 rated, Color: Black;
 Contact: Phosphor Bronze;
 Plating: Gold plating over Nickel on contact area; Tin plating on solder tail.
 Harpoon: Brass;
 Plating: Tin plating over Nickel.

***Mechanical**
 Insertion Force: 25N max.
 Withdrawal Force: 5N min.
 Durability: 500 cycles

***Electrical Specification**
 Current Rating: 1 Ampere per contact;
 Contact Resistance: 30 Milliohms max.
 Insulation Resistance: 1000 megohms min.
 Dielectric Withstanding Voltage: 500 V AC.

***Environmental**
 Operating Temperature: 0° to +55°

RoHS Compliant

TOLERANCES ARE

照片框

ORDER INFORMATION

SAS-SWA67PZ-29-LF
 SERIES | | | | | LEADFREE
 | | | | | 29 PIN
 | | | | | POST+CLIP
 | | | | | HIGH 6.75mm
 FEMALE | | | | | UPPER CONTACT
 | | | | | 90°SMT

DESCRIPTION: SAS 29P R/A SMT Female(6.75)

MORETHANALL
 PCB CONNECTORS
 Cable ASSEMBLIES

煜倫股份有限公司

www.morethanall.com

DRAWING BY CY

CHECKED BY GENIUS

UNIT / mm SCALE 1:1

DATE

SIZE A4 PPROJECTION

X, ±
 .X ±
 .XX ±
 .XXX ±
 ANG ±

