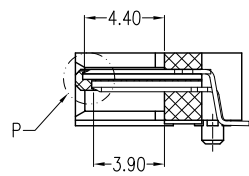
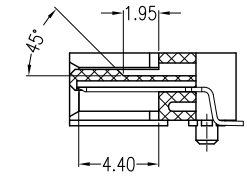


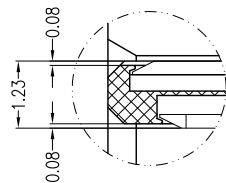
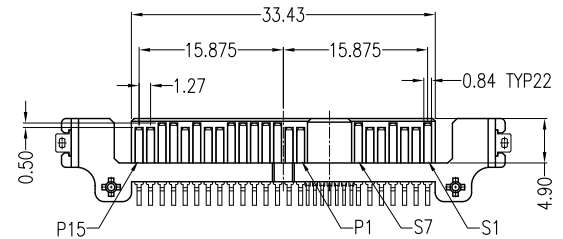
VIEW O
SCALE 3:1



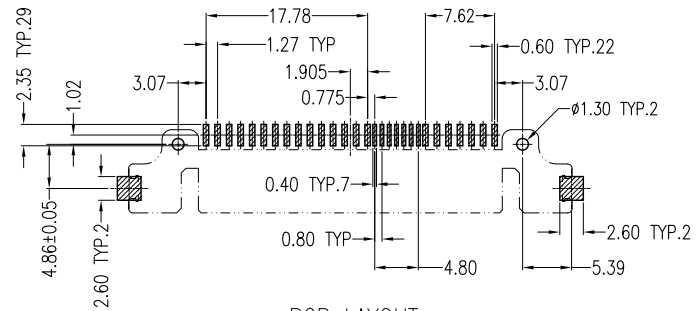
SECT A-A
SCALE 2:1



SECT B-B
SCALE 2:1



VIEW P
SCALE 6:1



PCB LAYOUT
TOP VIEW

NOTES:

***Material**

Housing: LCP, UL 94V-0 rated, Color: Black;
 Contact: Brass;
 Plating: Gold plating over Nickel on contact area; Tin plating on solder tail.
 Harpoon: Phosphor Bronze;
 Plating: Tin plating over Nickel.

***Mechanical**

Insertion Force: 25N max.
 Withdrawal Force: 5N min.
 Durability: 500 cycles

***Electrical Specification**

Current Rating: 1 Ampere per contact;
 Contact Resistance: 30 Milliohms max.
 Insulation Resistance: 1000 megohms min.
 Dielectric Withstanding Voltage: 500 V AC.

***Environmental**

Operating Temperature: 0°C to +55°C

RoHS Compliant

TOLERANCES ARE



DRAWING BY CY

CHECKED BY GENIUS

UNIT / mm SCALE 1 : 1

DATE

SIZE A4

X, ±
 .X ±
 .XX ±
 .XXX ±
 ANG ±

PJECTION

煜倫股份有限公司

www.morethanall.com

照片框

ORDER INFORMATION

SAS-PWA40P-29-LF
 SERIES | | | | LEADFREE
 | | | | 29 PIN
 | | | | POST
 | | | | HIGH 4.0mm
 MALE | | | | UPPER CONTACT
 | | | | 90°SMT

DESCRIPTION: SAS 7+15+7P SMT Type (Standard) Male